



R B WALTERS
ESTATE AGENTS



R B WALTERS
ESTATE AGENTS

*Bay Tree Road, Abbeymead, Gloucester,
Gloucestershire, GL4 5WD.*

Offers in the Region Of

If you are looking for a single level property, hidden away from passing traffic and people yet convenient for all your everyday amenities then you may well stop and take a closer look at this beautiful detached bungalow.

Located at the very end of one of the most sought-after roads in Abbeymead you would never know this property existed. Approached along a pretty driveway which leads to just a couple of properties the attractive exterior is matched once you get inside.

Having been well maintained by the current owners the property offers 3 bedrooms, kitchen, living room, sun room and 2 bathrooms whilst there is good parking and a double garage as well as landscaped rear garden.

Services

Mains Gas Central Heating

Mains Electric

Mains Water

Mains Drainage

Fibre Broadband to the Cabinet Available

Entrance Hall

Kitchen

11' 3" x 8' 7" (3.43m x 2.61m)

Lounge

14' 3" x 11' 8" (4.34m x 3.55m)

Sun Room

9' 3" x 8' 10" (2.82m x 2.69m)

Bedroom/Dining Room

13' 2" x 9' 1" (4.01m x 2.77m)

Bedroom

11' 8" x 10' 5" (3.55m x 3.17m)

En Suite

10' 4" x 3' 6" (3.15m x 1.07m)

Bedroom

13' 2" x 9' 5" (4.01m x 2.87m)





Bathroom
10' 4" x 6' 1" (3.15m x 1.85m)

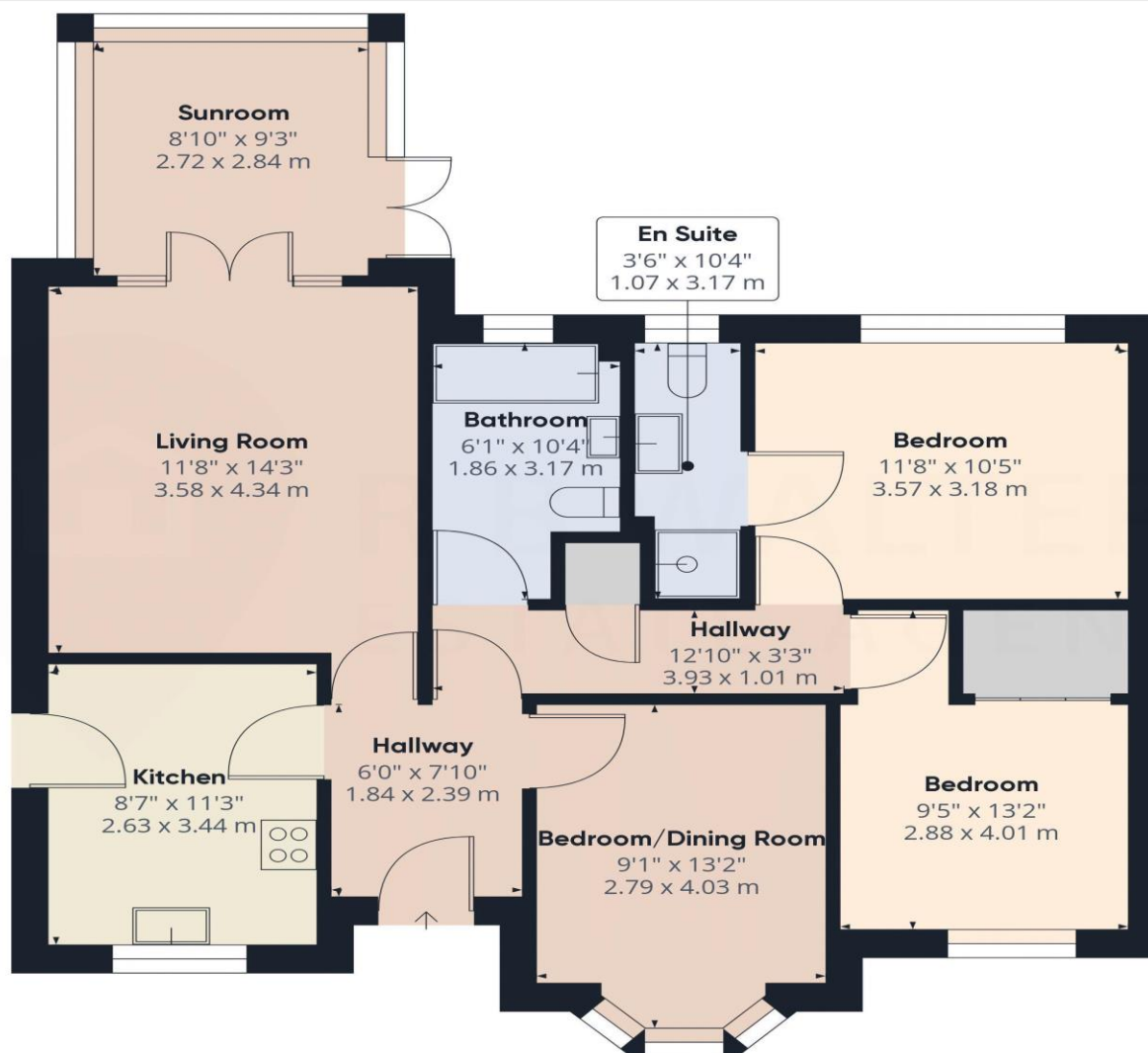
OUTSIDE

Driveway Parking

Double Garage

Rear Garden





Approximate total area⁽¹⁾

935.67 ft²

86.93 m²

(1) Excluding balconies and terraces

While every attempt has been made to ensure accuracy, all measurements are approximate, not to scale. This floor plan is for illustrative purposes only.

GIRAFFE360