



Great North Way, London, NW4

 3 Bedrooms  4 Bathrooms  3 Receptions

£850,000





Adam Hayes - Finchley Central Office - Sales 348 Regents Park Road, Finchley Central, London, N3 2LJ  
Tel: 0208 189 6333 Email: [info@adam-hayes.co.uk](mailto:info@adam-hayes.co.uk) Web: [www.adam-hayes.co.uk](http://www.adam-hayes.co.uk)



# Great North Way, London, NW4

£850,000

 3 Bedrooms  4 Bathrooms  3 Receptions

## Key Features

- Detached Family Home
- Three Bedrooms
- Four Bathrooms
- Three Reception
- Parking
- Mature Garden

## Nearest Stations

- Colindale Station 0.9 Miles
- Mill Hill East Station 1.0 Miles
- Hendon Central Station 1.2 Miles

## Property Description

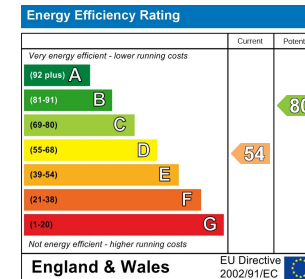
Set back off the Great North Way is this beautifully presented home offers a blend of elegance and comfort. The property boasts three spacious reception rooms, perfect for entertaining or family gatherings. It features three well-appointed bedrooms, with two enjoying the luxury of ensuite bathrooms, complemented by an additional two bathrooms, ensuring convenience for all.

The highlight of this home is undoubtedly its stunning south-facing garden. Mature and meticulously maintained, the garden offers a serene retreat with breathtaking views across Sunny Hill Park, providing a picturesque backdrop for relaxation and outdoor activities.

Situated on a desirable corner plot, this house combines privacy with a sense of openness. The interiors are thoughtfully designed to maximize natural light and space, creating a warm and inviting atmosphere. With its prime location and exceptional amenities, this property on Great North Way is an ideal family home, blending sophisticated living with the tranquility of its beautiful surroundings. To really appreciate the size, location and condition an internal viewing is highly recommended via vendors sole agents Adam Hayes Estate Agents.

## Other Information

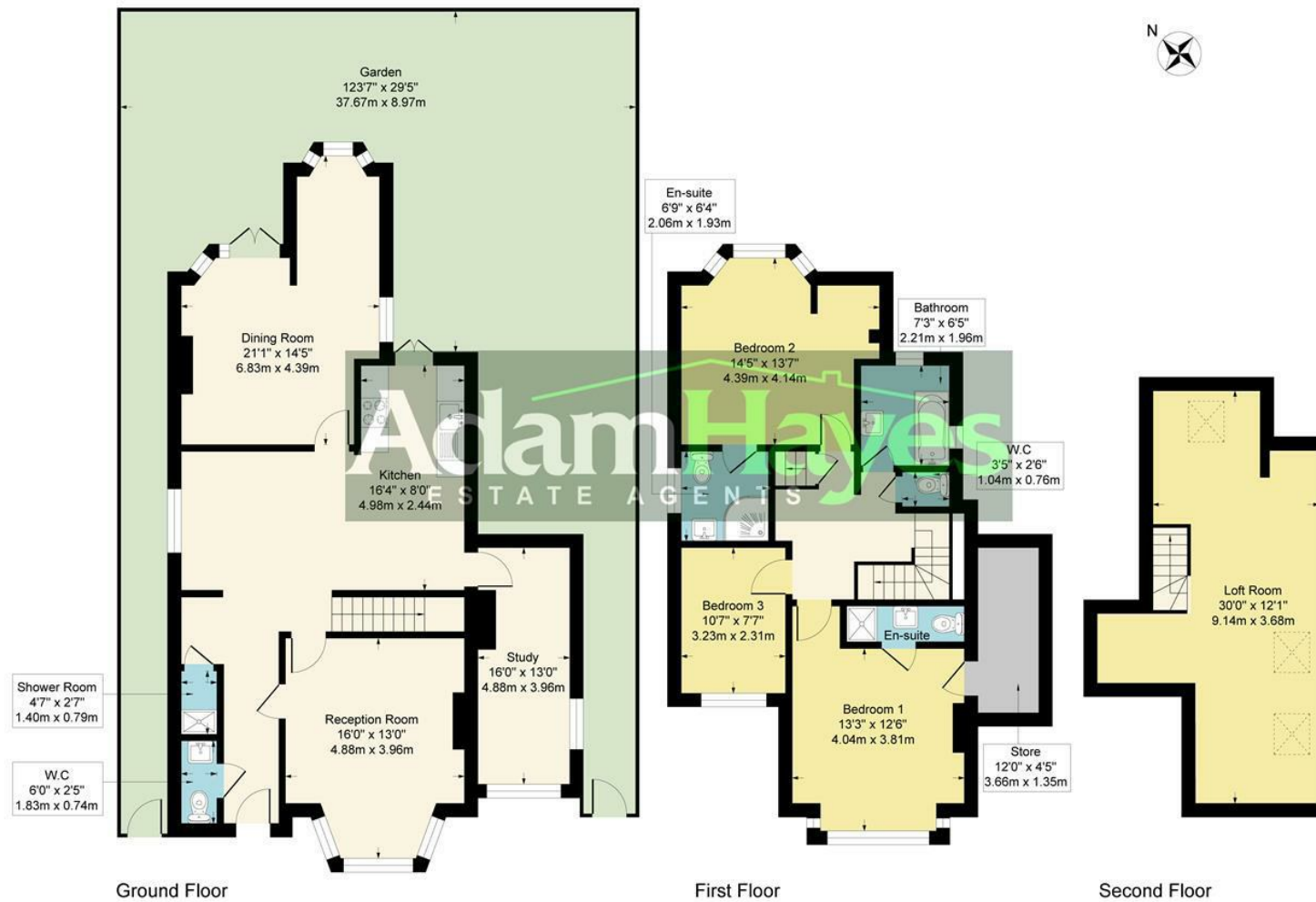
Tenure: Freehold  
Length of Lease: n/a  
Ground Rent: n/a  
Service Charge: n/a  
Service Review Period: n/a  
Council Tax Band: F



Adam Hayes - Finchley Central Office - Sales 348 Regents Park Road, Finchley Central, London, N3 2LJ

Tel: 0208 189 6333 Email: info@adam-hayes.co.uk Web: www.adam-hayes.co.uk

Approximate Gross Internal Area  
2218 sq ft - 206 sq m



Although every attempt has been made to ensure accuracy, all measurements are approximate.  
This floorplan is for illustrative purposes only and not to scale.  
Measured in accordance with RICS Standards.

These particulars, whilst believed to be accurate, are set out as a general outline only for guidance and do not constitute any part of an offer or contract. Intending purchasers or prospective tenants should not rely on them as statements or representation of fact, but must satisfy themselves by inspection or otherwise as to their accuracy. We have not carried out a detailed survey, not tested the services, appliances and specific fittings. Room sizes should not be relied upon for carpets and furnishings. The measurements given are approximate. No person in this firm's employment has the authority to make or give any representation or warranty in respect of the property.