








Adam Hayes - Finchley Central Office - Lettings 348 Regents Park Road, Finchley Central, London, N3 2LJ  
Tel: 0208 189 6333 Email: [info@adam-hayes.co.uk](mailto:info@adam-hayes.co.uk) Web: [www.adam-hayes.co.uk](http://www.adam-hayes.co.uk)

Gordon Road, Finchley Central, N3 1EN

£2,150 PCM

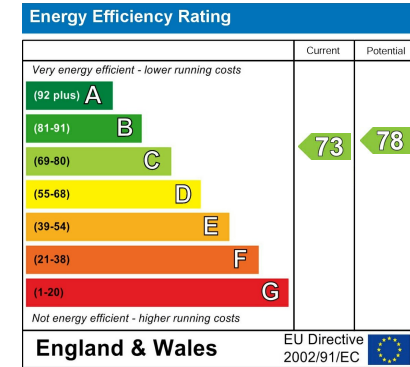
 3 Bedrooms  1 Bathrooms  1 Receptions

## Key Features

- Three Bedroom Purpose Built Flat
- 19ft Reception
- Guest WC
- Communal Gardens
- Modern Kitchen And Bathroom
- Duplex Apartment

## Other Information

Council Tax Band: D  
Length of Tenancy: Long Let  
Deposit: £2,480



## Nearest Stations

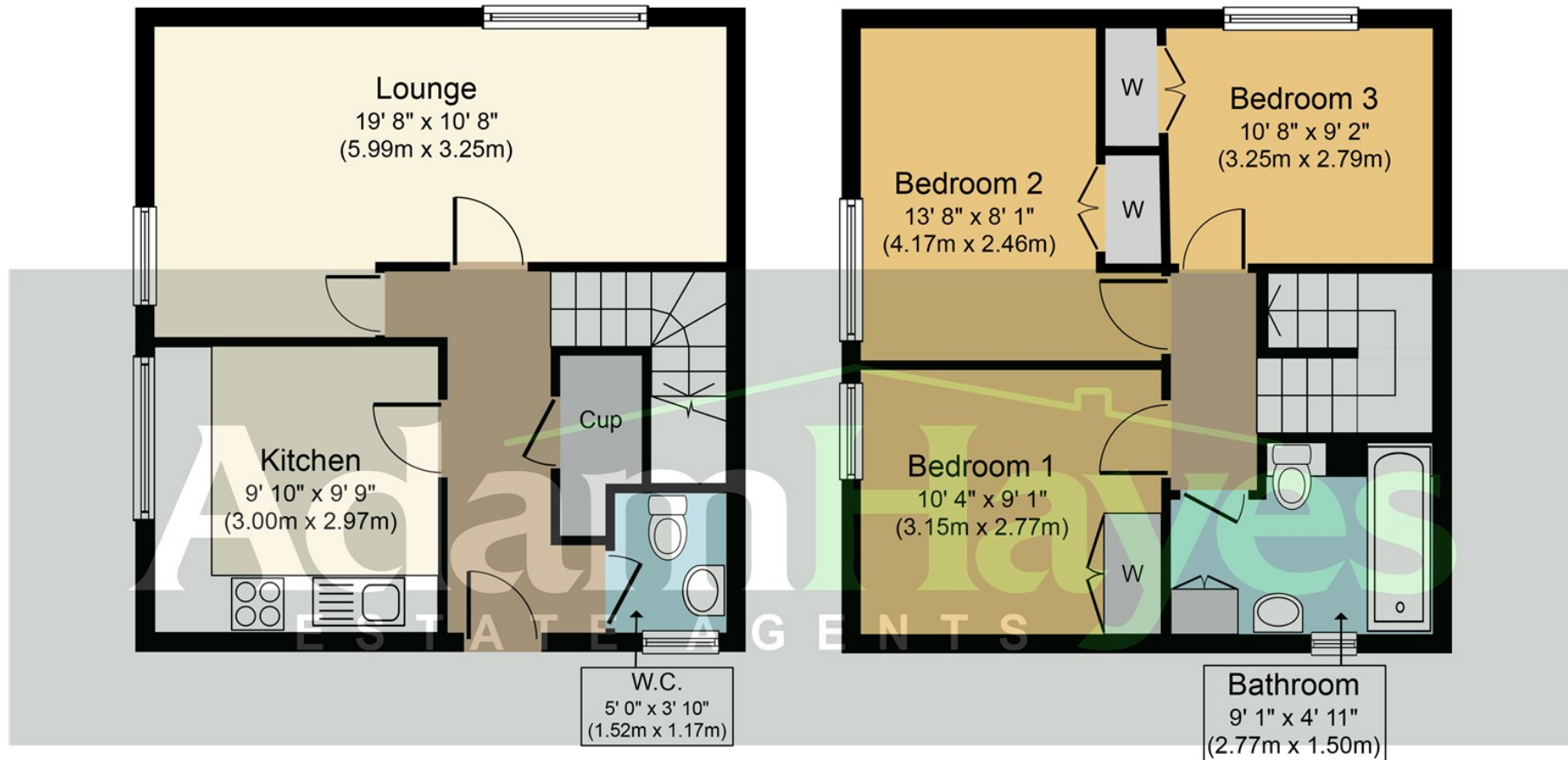
- Finchley Central
- West Finchley

## Property Description

A newly decorated and spacious three double bedroom duplex purpose built apartment situated within easy access of Finchley Central Tube Station (Northern Line) and local shops and amenities. The property benefits from an approximately 19ft reception, a modern fitted kitchen and bathroom, gas central heating, guest WC, double glazing and communal gardens. Early viewings highly recommended!! Families only, no HMO!

Adam Hayes - Finchley Central Office - Lettings 348 Regents Park Road, Finchley Central, London, N3 2LJ

Tel: 0208 189 6333 Email: [info@adam-hayes.co.uk](mailto:info@adam-hayes.co.uk) Web: [www.adam-hayes.co.uk](http://www.adam-hayes.co.uk)



**Ground Floor**  
**Approximate Floor Area**  
**409 sq. ft.**  
**(38.0 sq. m.)**

**First Floor**  
**Approximate Floor Area**  
**409 sq. ft.**  
**(38.0 sq. m.)**

**Approx. Gross Internal Floor Area 818 sq. ft. / 76.0 sq. m.**

Whilst every attempt has been made to ensure the accuracy of the floor plan contained here, measurements of doors, windows, rooms and any other items are approximate and no responsibility is taken for any error, omission, or mis-statement. This plan is for illustrative purposes only and should be used as such by any prospective purchaser or tenant. The services, systems and appliances shown have not been tested and no guarantee as to their operability or efficiency can be given.

Copyright V360 Ltd 2017 | [www.houseviz.com](http://www.houseviz.com)

These particulars, whilst believed to be accurate, are set out as a general outline only for guidance and do not constitute any part of an offer or contract. Intending purchasers or prospective tenants should not rely on them as statements or representation of fact, but must satisfy themselves by inspection or otherwise as to their accuracy. We have not carried out a detailed survey, not tested the services, appliances and specific fittings. Room sizes should not be relied upon for carpets and furnishings. The measurements given are approximate. No person in this firm's employment has the authority to make or give any representation or warranty in respect of the property.