



Ongar Road, Kelvedon Hatch, CM15

BUTLER  STAG





**Brizes Park presents a rare opportunity to live in a private, luxury development, complete with secure gated access and set within its own beautifully landscaped grounds.**



**Share of Freehold**  
**Asking Price £780,000**

Brizes Park presents a rare opportunity to live within an exclusive, private luxury development nestled in its own beautifully landscaped grounds, complete with secure gated access.

The approach to the estate is marked by a grand set of electric gates that open to a sweeping quarter-mile driveway. This elegant drive meanders through impeccably maintained, quintessentially English gardens, creating a breath-taking entrance to the main house and surrounding properties.

The expansive parkland is fully enclosed and meticulously cared for, featuring rolling lawns that enhance the serene and picturesque environment for all residences. The grounds are adorned with mature tree clusters and a plantation of Oak, Chestnut, Pine, Cedar, and Elm trees along the northern boundary, offering scenic woodland walks.

To the south of the main drive lies a charming moated area, while the centrepiece in front of the main house is the historic 'Truss Palladian Bridge,' adding timeless character to the estate.

Adding to the unique allure, the parkland is home to a self-contained herd of Fallow deer, often seen grazing peacefully, further enriching the tranquil atmosphere.

Brizes Park offers a selection of exquisitely renovated apartments alongside newly built homes, seamlessly blending heritage and modern luxury. This exceptional development promises unparalleled privacy, security, and an extraordinary living experience in one of Eastern England's most prestigious settings.

**BRIZES HALL: PLOTS 1-10**

The main Grade II listed house, dating back to around 1722, has been meticulously converted to preserve its stunning external and internal period features. It now offers 10



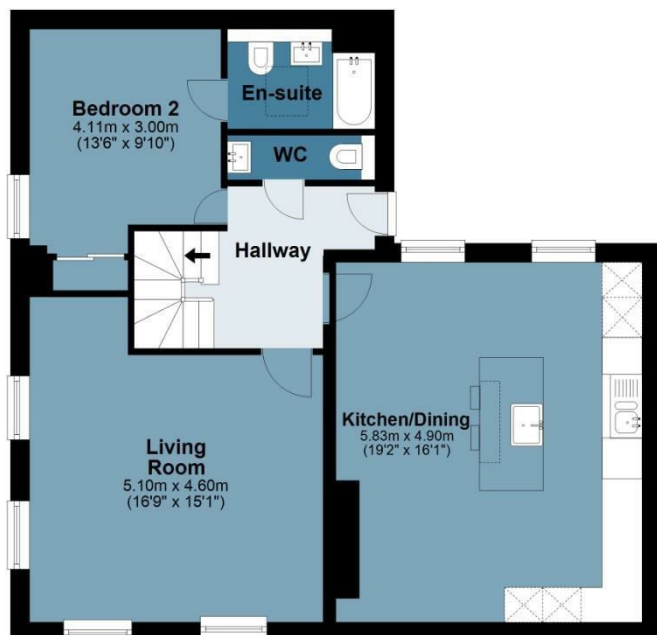
## Plot 1

Approx. Gross Internal Area 97.4 Sq M ( 1048.8 Sq Ft )

BUTLER & STAG

### Ground Floor

Approx. 79.3 sq. metres (854.0 sq. feet)



### First Floor

Approx. 18.1 sq. metres (194.8 sq. feet)



Measurements are approximate and for illustration purposes only. While we do not doubt the accuracy and completeness, we advise you conduct a careful independent assessment of the property to determine monetary value.

© @modephoto.uk www.modephoto.co.uk

Prepared on behalf of Butler & Stag  
Land and New Homes

If you have any further questions  
please don't hesitate to contact us on  
the details below

BUTLER & STAG

020 4542 2999

Unit 6 Buckingham Court Rectory Lane, Loughton,  
Essex. IG10 2QZ

enquires@butlerandstag.com

www.butlerandstag.uk

IMPORTANT NOTICE - These particulars have been prepared in good faith and they are not intended to constitute part of an offer or contract. We have not performed a structural survey on this property and the services, appliances and specific fittings have not been tested. All photographs, measurements, floor plans and distances referred to are given as a guide and should not be relied upon.