



Half Moon Lane, Epping, CM16

BUTLER & STAG



The chance to acquire one of just four, brand new two-bedroom apartments within the heart of Epping's vibrant High Street.



Leasehold

Price Guide £435,000

Revival Court is a luxury development of 16 bespoke apartments, all boasting their own private balconies, set within one of the most enviable positions at the start of the bustling historic Epping High Street.

With the first phase of the development being launched in 2018, this is the very first chance to acquire one of just four, two bedroom units within phase two.

Each of the newly available apartments is individually designed in its layout and has all the features you can expect for modern living including contemporary fully fitted kitchens, quartz stone worktops and upstands and integrated appliances to name just a few.

The standard of living embodied within these stunning apartments give those living there the practical luxury that they require and deserve. Whether you wish to escape the urban sprawl and simply unwind, or want something a little more active, Epping Forest has something for everyone.

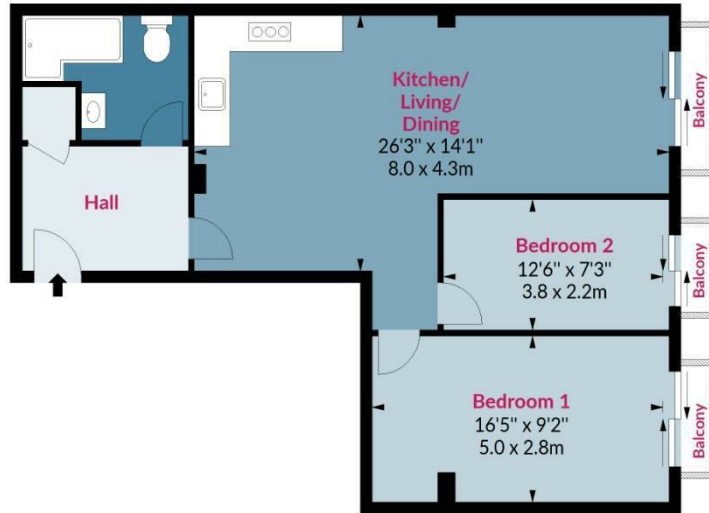
Epping is a fantastic market town occupying a prominent situation, about 5 miles from junction 7 of the M11 and a similar distance from the M25 London Orbital Motorway. As well as having a comprehensive range of social, recreational and educational facilities, Epping is the very first stop on the Central Line giving direct access into London's major underground stations.



Revival Court, Cm16

Approx. Gross Internal Area 714 Sq Ft - 66.33 Sq M
Approx. Gross Balcony Area 31 Sq Ft - 2.88 Sq M

BUTLER & STAG



Ground Floor

Floor Area 714 Sq Ft - 66.33 Sq M



Measured according to RICS IPMS2. Floor plan is for illustrative purposes only and is not to scale. Every attempt has been made to ensure the accuracy of the floor plan shown, however all measurements, fixtures, fittings and data shown are an approximate interpretation for illustrative purposes only. 1 sq m = 10.76 sq feet.

lpaplus.com

Date: 6/12/2023

Prepared on behalf of Butler & Stag
Land and New Homes

If you have any further questions
please don't hesitate to contact us on
the details below

BUTLER & STAG

☎ 020 4542 2999

🏠 12 Coppice Row Theydon Bois, Essex, CM16 7ES

✉ enquires@butlerandstag.com

www.butlerandstag.uk

IMPORTANT NOTICE - These particulars have been prepared in good faith and they are not intended to constitute part of an offer or contract. We have not performed a structural survey on this property and the services, appliances and specific fittings have not been tested. All photographs, measurements, floor plans and distances referred to are given as a guide and should not be relied upon.