



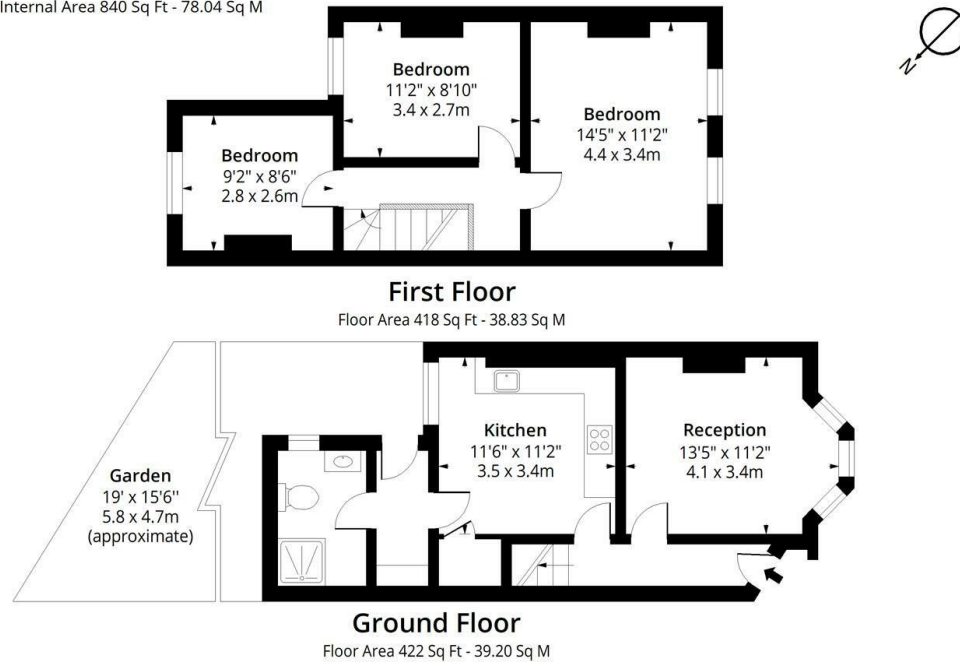
## 37 Forest Gardens, London, N17 6XA

£2,000

- Families
- 3 Bedrooms
- Two Sharers
- 1 bathroom

## Forest Gardens, N17

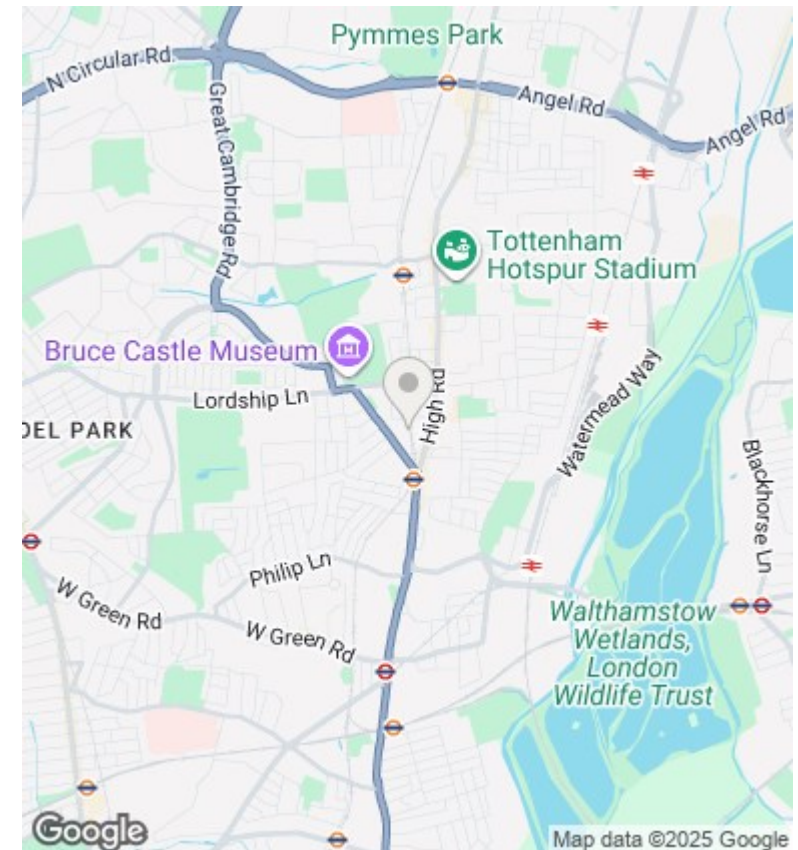
Approx. Gross Internal Area 840 Sq Ft - 78.04 Sq M



Measured according to RICS IPMS2. Floor plan is for illustrative purposes only and is not to scale. Every attempt has been made to ensure the accuracy of the floor plan shown, however all measurements, fixtures, fittings and data shown are an approximate interpretation for illustrative purposes only. 1 sq m = 10.76 sq feet.

lpaplus.com

Date: 23/10/2025



## Directions

## Viewings

Viewings by arrangement only. Call 0208 075 4927 to make an appointment.

## Council Tax Band

C

## EPC Rating:

E

Energy Efficiency Rating		
	Current	Potential
Very energy efficient - lower running costs		
(92-plus) <b>A</b>		
(81-91) <b>B</b>		
(69-80) <b>C</b>		
(55-68) <b>D</b>		
(39-54) <b>E</b>	52	
(21-38) <b>F</b>		
(1-20) <b>G</b>		
Not energy efficient - higher running costs		
<b>England &amp; Wales</b>	EU Directive 2002/91/EC	