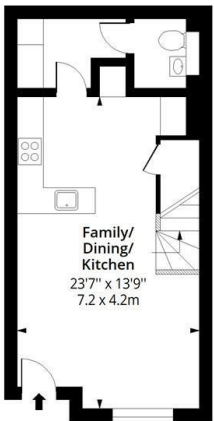


15 Lanesborough Street, Reading, RG2 6BS

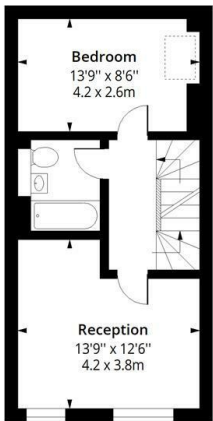
£2,400 Per month

Lanesborough Street, RG2

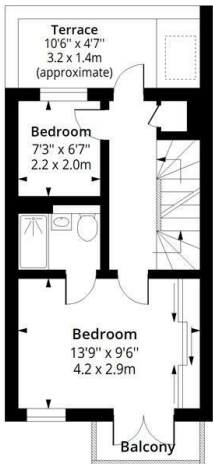
Approx. Gross Internal Area 1313 Sq Ft - 121.98 Sq M
Approx. Gross Terrace/ Balcony Area 191 Sq Ft - 17.74 Sq M



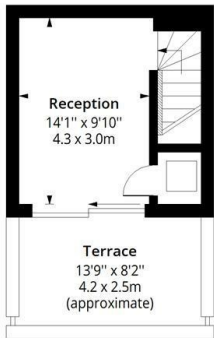
Ground Floor
Floor Area 398 Sq Ft - 36.97 Sq M



First Floor
Floor Area 406 Sq Ft - 37.72 Sq M



Second Floor
Floor Area 318 Sq Ft - 29.54 Sq M



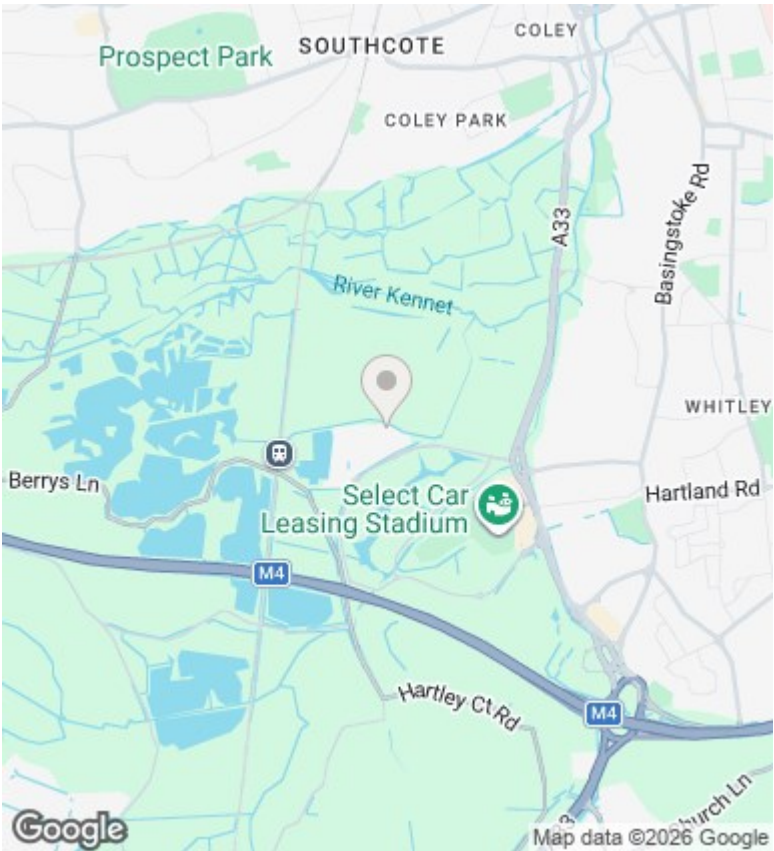
Third Floor
Floor Area 191 Sq Ft - 17.74 Sq M



Measured according to RICS IPMS2. Floor plan is for illustrative purposes only and is not to scale. Every attempt has been made to ensure the accuracy of the floor plan shown, however all measurements, fixtures, fittings and data shown are an approximate interpretation for illustrative purposes only. 1 sq m = 10.76 sq feet.

lpaplus.com

Date: 13/8/2025



Directions

Viewings

Viewings by arrangement only. Call 0208 075 4927 to make an appointment.

Council Tax Band

D

EPC Rating:

Energy Efficiency Rating		
	Current	Potential
Very energy efficient - lower running costs		
(92 plus) A		
(81-91) B		
(69-80) C		
(55-68) D		
(39-54) E		
(21-38) F		
(1-20) G		
Not energy efficient - higher running costs		
England & Wales	EU Directive 2002/91/EC	