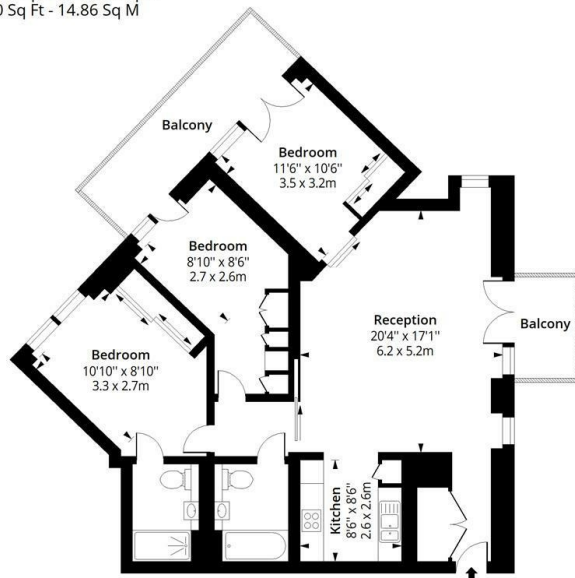


Apartment A.10.9, Capella Court 1 Lewis Cubitt Park, London, £5,850 Per month

- Three double bedrooms
- Balcony
- 24h concierge

Richmond Avenue, N1

Approx. Gross Internal Area 1101 Sq Ft - 102.28 Sq M
Approx. Gross Balcony Area 160 Sq Ft - 14.86 Sq M



Tenth Floor

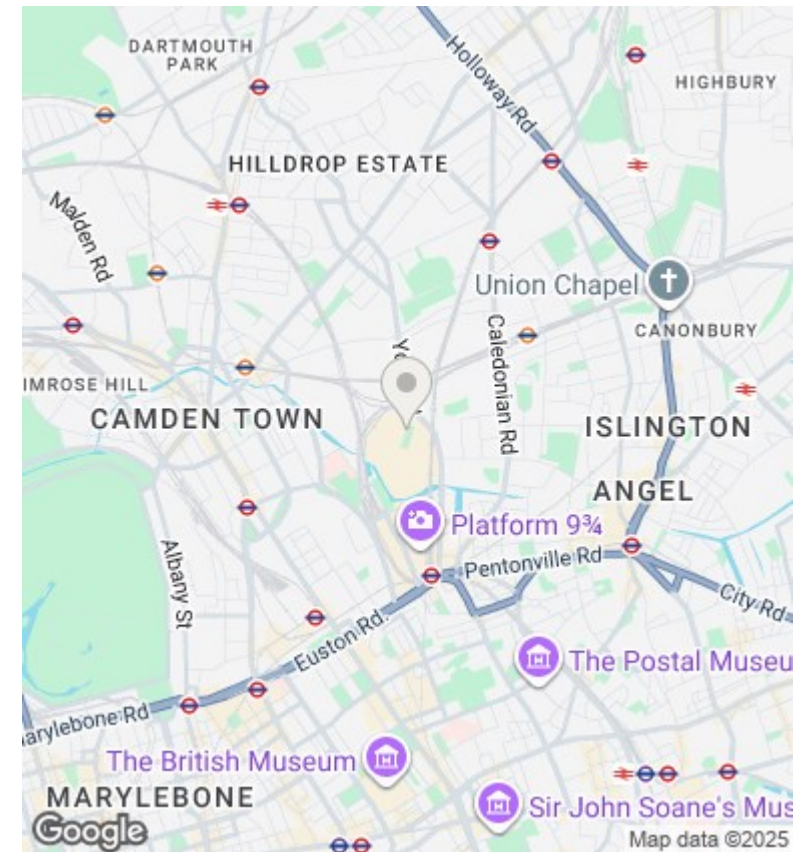
Floor Area 1101 Sq Ft - 102.28 Sq M



Measured according to RICS IPMS2. Floor plan is for illustrative purposes only and is not to scale. Every attempt has been made to ensure the accuracy of the floor plan shown, however all measurements, fixtures, fittings and data shown are an approximate interpretation for illustrative purposes only. 1 sq m = 10.76 sq feet.

lpaplus.com

Date: 24/9/2024



Directions

Viewings

Viewings by arrangement only. Call 0208 075 4927 to make an appointment.

Council Tax Band

G

EPC Rating:

B

Energy Efficiency Rating		
	Current	Potential
Very energy efficient - lower running costs		
(92 plus) A		
(81-91) B	85	85
(69-80) C		
(55-68) D		
(39-54) E		
(21-38) F		
(1-20) G		
Not energy efficient - higher running costs		
England & Wales	EU Directive 2002/91/EC	