

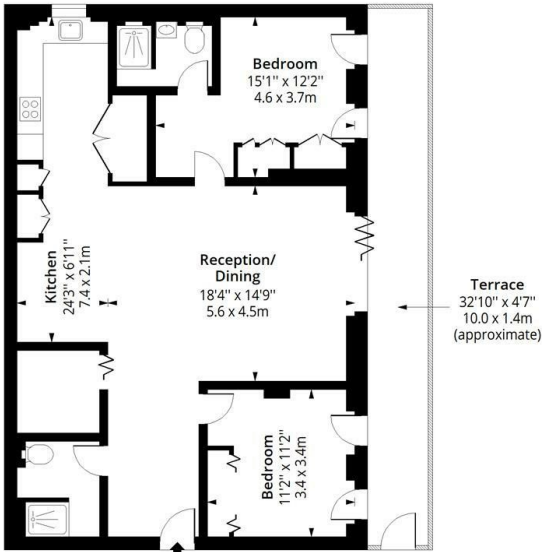


2 Cuthbert mews Cuthbert House, Brigade Mews, London, £4,500 Per month

- Two bedrooms
- on-site gym
- Terrace
- 24-hour concierge services

Cuthbert House, SE1

Approx. Gross Internal Area 1003 Sq Ft - 93.18 Sq M
Approx. Gross Terrace Area 187 Sq Ft - 17.37 Sq M



Ground Floor

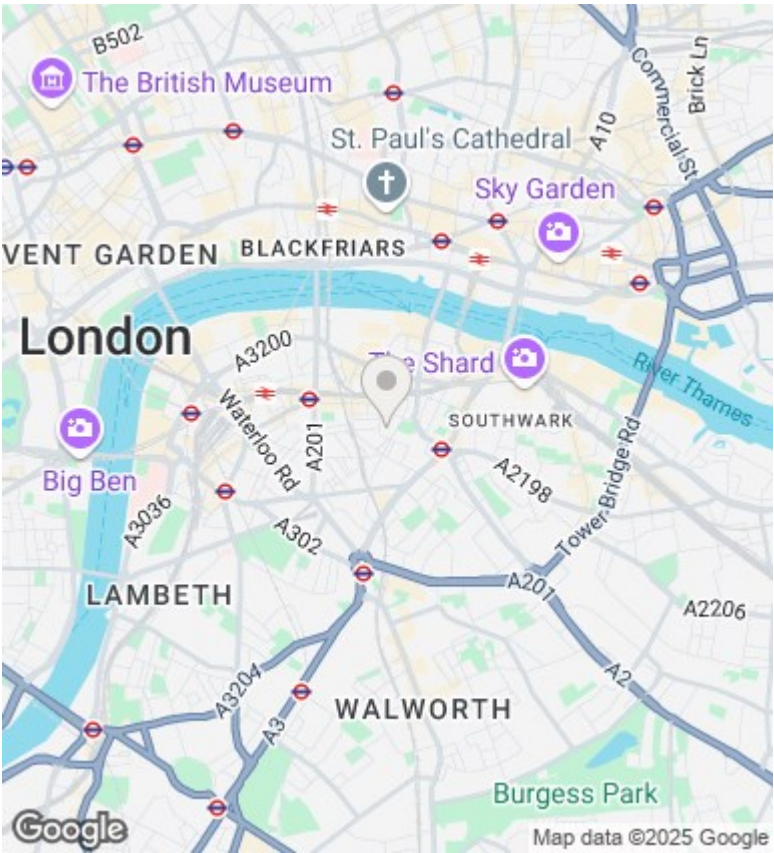
Floor Area 1003 Sq Ft - 93.18 Sq M



Measured according to RICS IPMS2. Floor plan is for illustrative purposes only and is not to scale. Every attempt has been made to ensure the accuracy of the floor plan shown, however all measurements, fixtures, fittings and data shown are an approximate interpretation for illustrative purposes only. 1 sq m = 10.76 sq feet.

lpaplus.com

Date: 19/5/2025



Directions

Viewings

Viewings by arrangement only. Call 0208 075 4927 to make an appointment.

Council Tax Band

F

EPC Rating:

B

Energy Efficiency Rating		
	Current	Potential
Very energy efficient - lower running costs		
(92 plus) A	86	86
(81-91) B		
(69-80) C		
(55-68) D		
(39-54) E		
(21-38) F		
(1-20) G		
Not energy efficient - higher running costs		
England & Wales		
EU Directive 2002/91/EC		
