



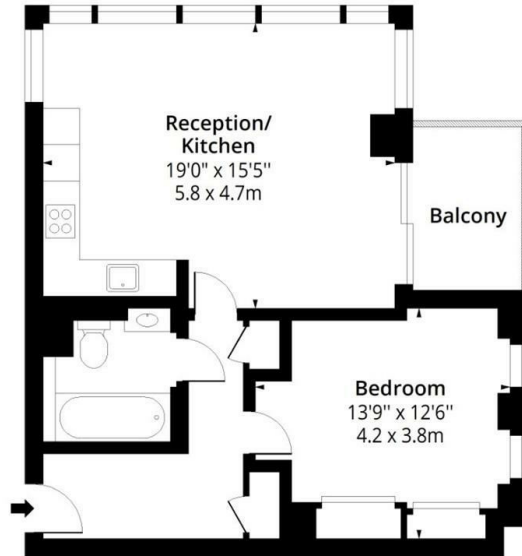
## Flat 806, 1 Pan Peninsula Square, London, E14 9HA

£2,500 Per month

- One double bedroom
- Balcony
- Gym, swimming pool, spa, cinema, and a sky bar
- 24h-concierge

## Pan Peninsula Quare, E14

Approx. Gross Internal Area 606 Sq Ft - 56.30 Sq M  
Approx. Gross Balcony Area 52 Sq Ft - 4.83 Sq M



### Eighth Floor

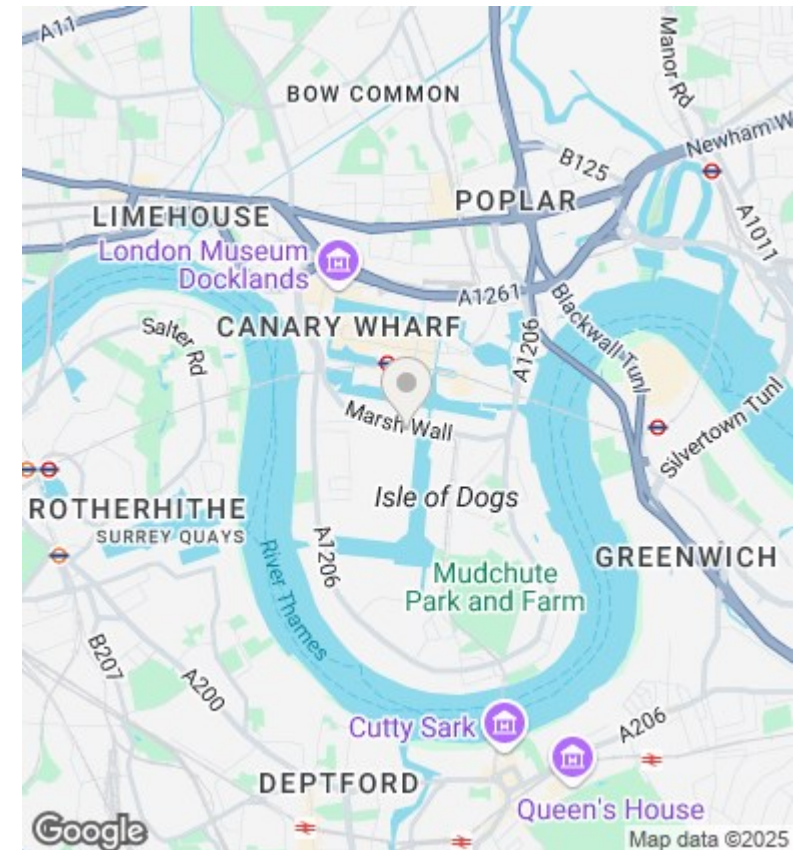
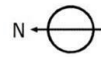
Floor Area 606 Sq Ft - 56.30 Sq M



Measured according to RICS IPMS2. Floor plan is for illustrative purposes only and is not to scale. Every attempt has been made to ensure the accuracy of the floor plan shown, however all measurements, fixtures, fittings and data shown are an approximate interpretation for illustrative purposes only. 1 sq m = 10.76 sq feet.

lpaplus.com

Date: 8/5/2025



## Directions

## Viewings

Viewings by arrangement only. Call 0208 075 4927 to make an appointment.

## Council Tax Band

F

## EPC Rating:

B

Energy Efficiency Rating		
	Current	Potential
Very energy efficient - lower running costs		
(92 plus) A		
(81-91) B	82	84
(69-80) C		
(55-68) D		
(39-54) E		
(21-38) F		
(1-20) G		
Not energy efficient - higher running costs		
England & Wales	EU Directive 2002/91/EC	