

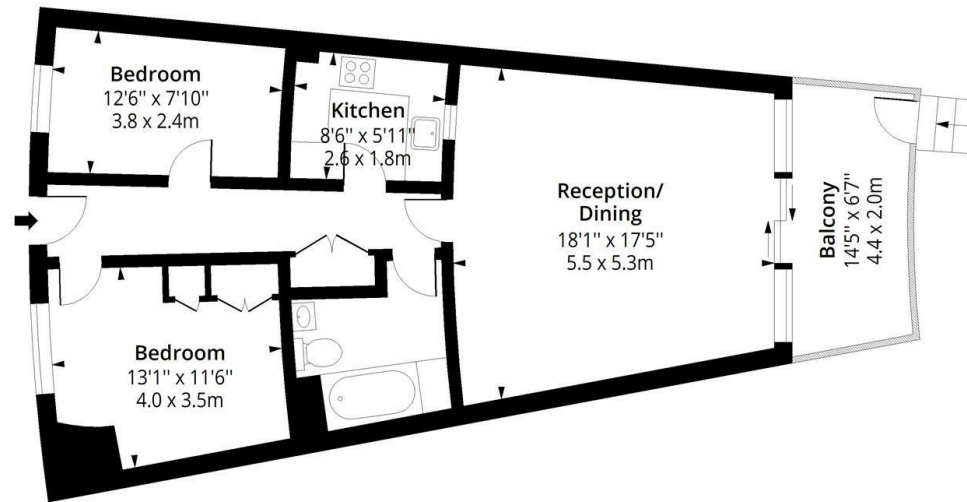


Flat 68, 416 Pierhead lock, Manchester Road, Docklands, £1,900

- Two bedrooms
- Great location
- Secure
- Riverside

Pierhead lock , E14

Approx. Gross Internal Area 753 Sq Ft - 69.95 Sq M
Approx. Gross Balcony Area 88 Sq Ft - 8.18 Sq M



First Floor

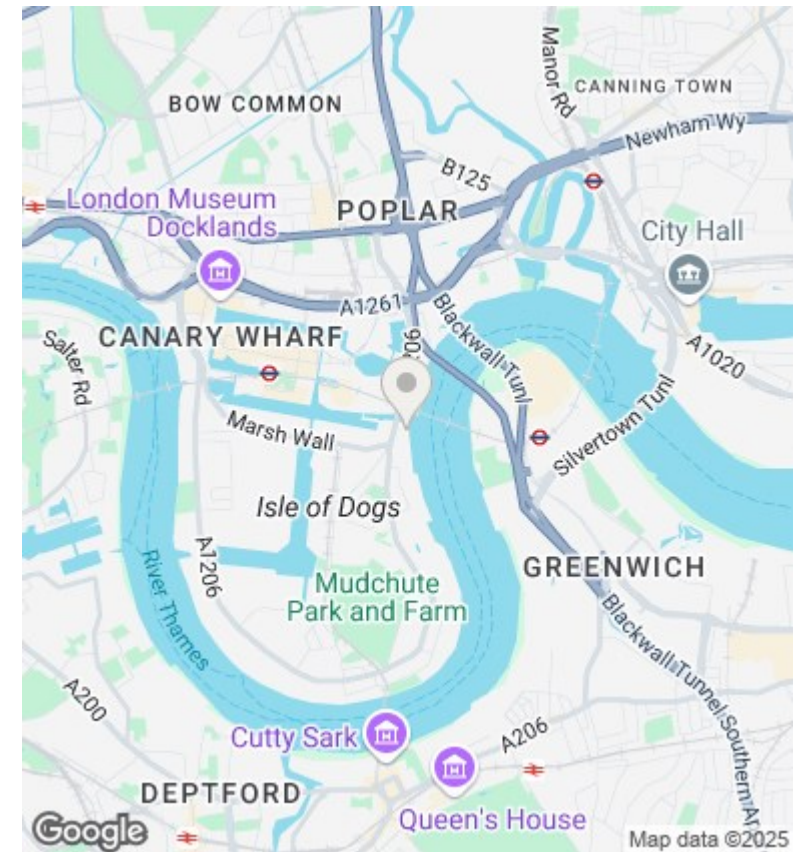
Floor Area 753 Sq Ft - 69.95 Sq M



Measured according to RICS IPMS2. Floor plan is for illustrative purposes only and is not to scale. Every attempt has been made to ensure the accuracy of the floor plan shown, however all measurements, fixtures, fittings and data shown are an approximate interpretation for illustrative purposes only. 1 sq m = 10.76 sq feet.

lpaplus.com

Date: 11/4/2025



Directions

Viewings

Viewings by arrangement only. Call 0208 075 4927 to make an appointment.

Council Tax Band

E

EPC Rating:

C

Energy Efficiency Rating		
	Current	Potential
Very energy efficient - lower running costs		
(92-plus) A		
(81-91) B		
(69-80) C		
(55-68) D		
(39-54) E		
(21-38) F		
(1-20) G		
Not energy efficient - higher running costs		
England & Wales	EU Directive 2002/91/EC	

hello@aplivinglondon.co.uk
<https://www.aplivinglondon.co.uk/>

99 Bishopsgate, EC2M 3XD, London, EC2M 3XD
0208 075 4927