

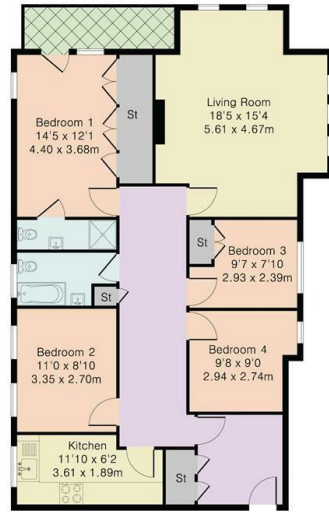


Flat 15, 409 Hillside Court, Finchley Road, London, NW3 6HG

£4,000 Per month

- 4 Bedrooms
- Great location
- Balcony

Approximate Gross Internal Area 1047 sq ft – 97 sq m



First Floor



Although Pink Plan Ltd ensures the highest level of accuracy, measurements of doors, windows and rooms are approximate and no responsibility is taken for error, omission or misstatement. These plans are for representation purposes only as defined by RICS code of measuring practice. No guarantee is given on total square footage of the property within this plan. The figure icon is for initial guidance only and should not be relied on as a basis of valuation.



Directions

Viewings

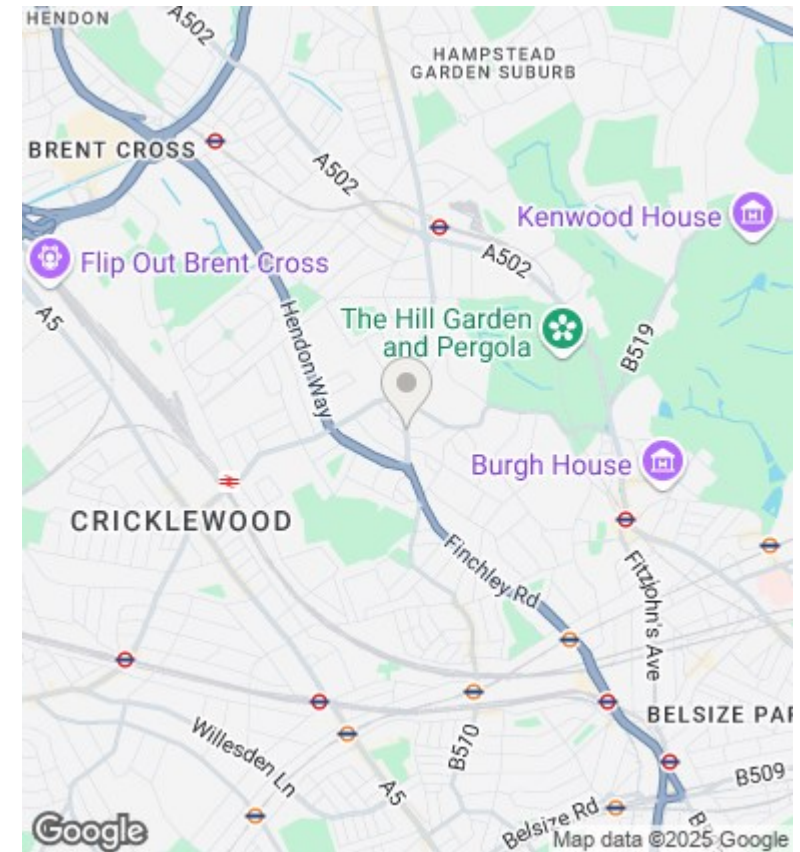
Viewings by arrangement only. Call 0208 075 4927 to make an appointment.

Council Tax Band

F

EPC Rating:

C



Energy Efficiency Rating		
	Current	Potential
Very energy efficient - lower running costs		
(92 plus) A		
(81-91) B		79
(69-80) C	69	
(55-68) D		
(39-54) E		
(21-38) F		
(1-20) G		
Not energy efficient - higher running costs		
England & Wales		EU Directive 2002/91/EC