

William.



15 Draycott Avenue, Rothley, LE7 7UP

Price £99,000



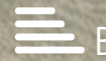
1



1

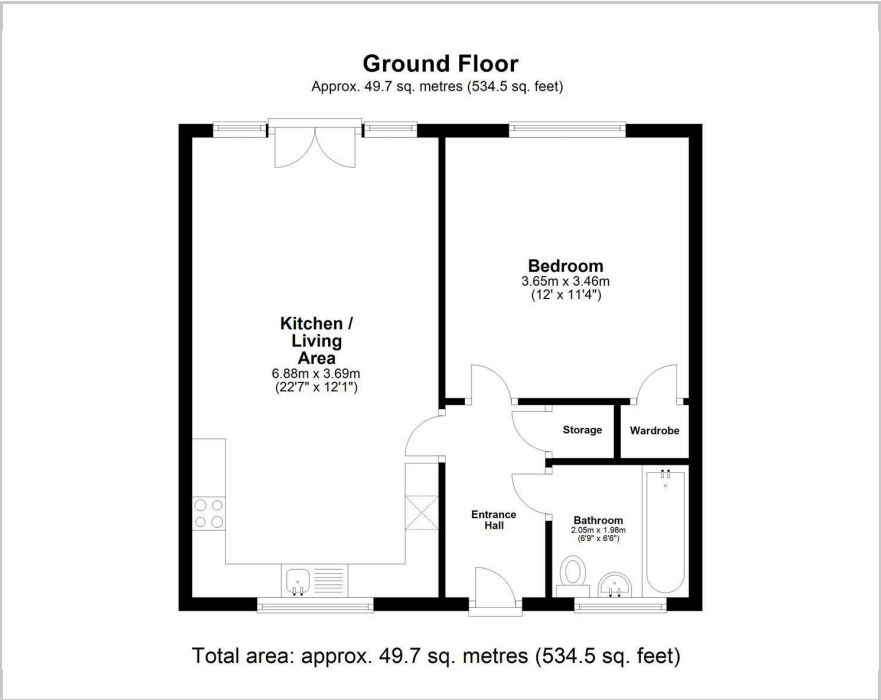


1

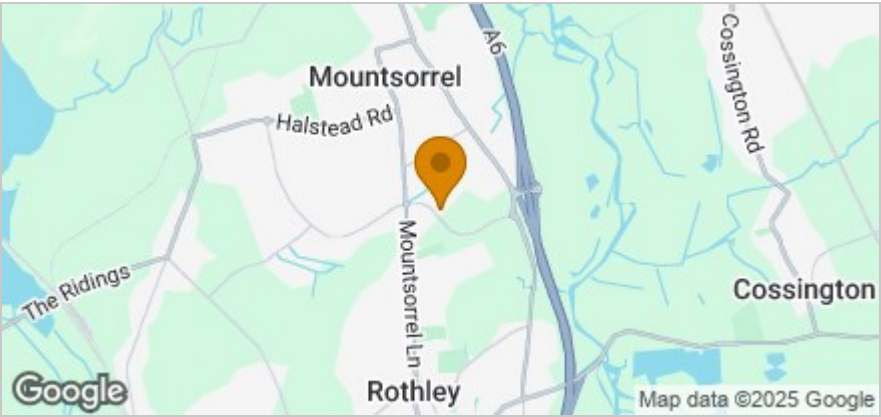


B

Floor Plan



Area Map



These particulars, whilst believed to be accurate are set out as a general outline only for guidance and do not constitute any part of an offer or contract. Intending purchasers should not rely on them as statements of representation of fact, but must satisfy themselves by inspection or otherwise as to their accuracy. No person in this firm's employment has the authority to make or give any representation or warranty in respect of the property.

4 Rupert Law Close, Quorn, Loughborough, LE12 8PE
Tel: 01509 426 106 Email: hello@william-property.com <https://www.william-property.com>

Key Features:

- ** FIXED ASKING PRICE **
- ** 55% Shared Ownership Scheme **
- No Upward Chain
- Modern Bungalow
- Well Presented Throughout
- Open Plan Kitchen / Living Space
- Large Double Bedroom & Modern Bathroom
- Private Rear Garden
- Prime Village Location
- Viewing Highly Recommended

Viewing:

Please contact our Team on 01509 426 106 if you wish to arrange a viewing appointment for this property or require further information.

Energy Efficiency Graph

