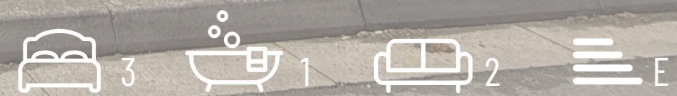


# William.

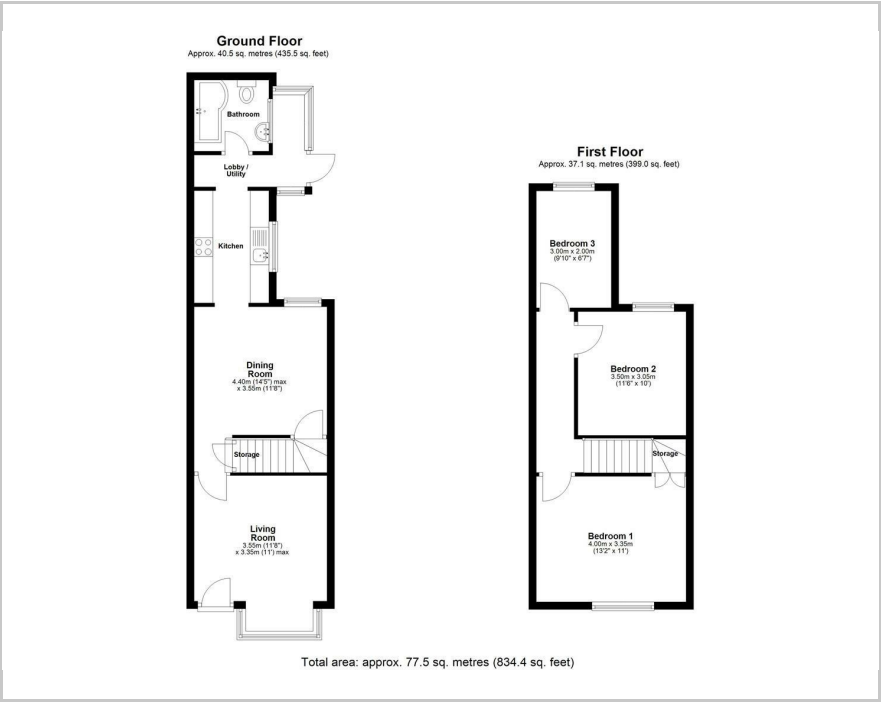


18 Mansfield Street, Loughborough, LE12 8BE  
Guide price £295,000





Floor Plan



Area Map



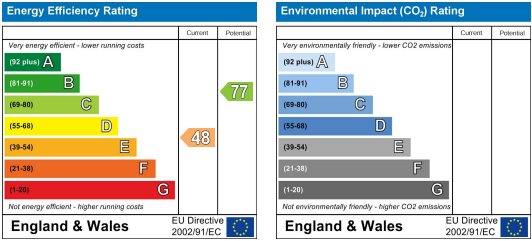
Key Features:

- Semi-Detached
- Prime Village Location
- 3 Bedrooms
- 2 Reception Rooms
- Scope for Extension / Loft Conversion (STP)
- Well Presented Throughout
- Rear Lobby / Utility Area
- South Facing Rear Garden
- Fantastic Transport Links Nearby
- A Property Which Must Be Viewed!

Viewing:

Please contact our Team on 01509 426 106 if you wish to arrange a viewing appointment for this property or require further information.

Energy Efficiency Graph



These particulars, whilst believed to be accurate are set out as a general outline only for guidance and do not constitute any part of an offer or contract. Intending purchasers should not rely on them as statements of representation of fact, but must satisfy themselves by inspection or otherwise as to their accuracy. No person in this firm's employment has the authority to make or give any representation or warranty in respect of the property.