

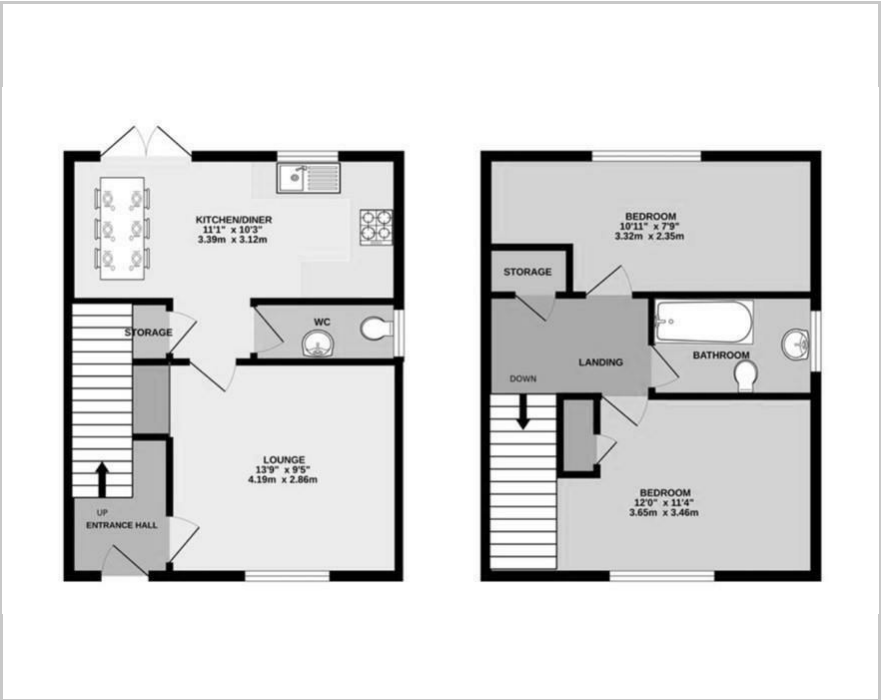
William.



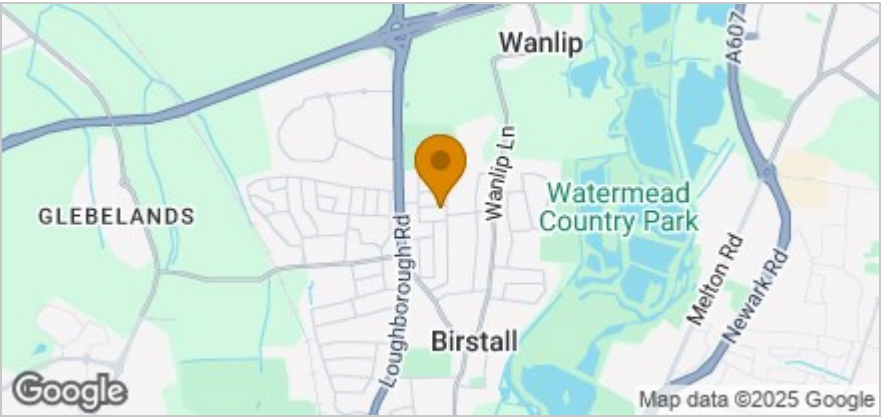
23 Hollytree Avenue, Leicester, LE4 4LG
Offers over £250,000



Floor Plan



Area Map



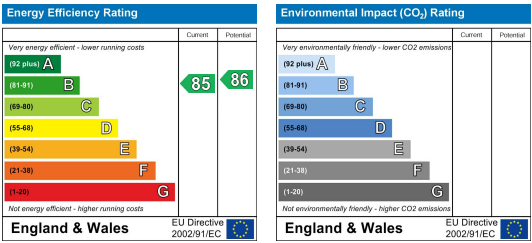
Key Features:

- **** NO UPWARD CHAIN ****
- Modern Semi-Detached Home
- 2 Double Bedrooms
- Spacious Living Room
- Separate Dining Kitchen
- Modern Bathroom & Downstairs WC
- Private South Facing Rear Garden
- Private Driveway
- Ideal Purchase for First Time Buyers
- A Property Which Must Be Viewed!

Viewing:

Please contact our Team on 01509 426 106 if you wish to arrange a viewing appointment for this property or require further information.

Energy Efficiency Graph



These particulars, whilst believed to be accurate are set out as a general outline only for guidance and do not constitute any part of an offer or contract. Intending purchasers should not rely on them as statements of representation of fact, but must satisfy themselves by inspection or otherwise as to their accuracy. No person in this firms employment has the authority to make or give any representation or warranty in respect of the property.