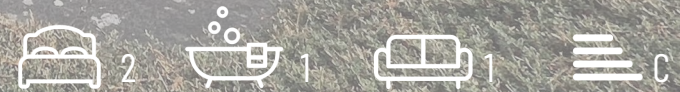


# William.



46 Freeman Way, Loughborough, LE12 8SQ  
Guide price £240,000



## Floor Plan



## Area Map



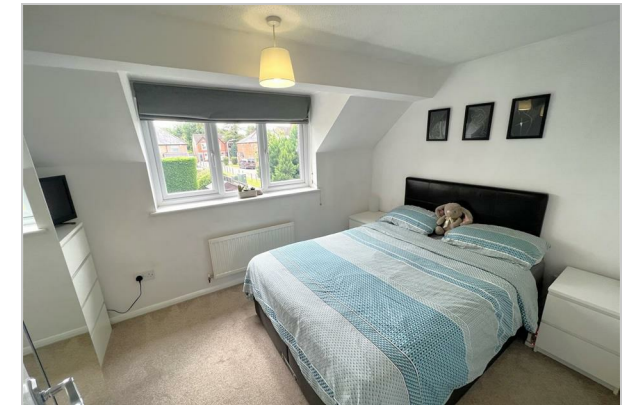
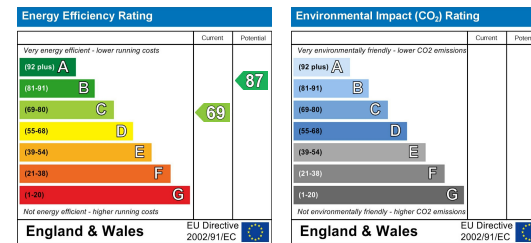
## Key Features:

- End Town House
- Well Presented Throughout
- Two Double Bedrooms
- Modern Kitchen & Bathroom
- Spacious Living/Dining Room
- Private, South Facing Garden
- Fully Double Glazed & Gas Central Heating
- Two Allocated Parking Spaces
- Prime Village Location
- Viewing Highly Recommended

## Viewing:

Please contact our Team on 01509 426 106 if you wish to arrange a viewing appointment for this property or require further information.

## Energy Efficiency Graph



These particulars, whilst believed to be accurate are set out as a general outline only for guidance and do not constitute any part of an offer or contract. Intending purchasers should not rely on them as statements of representation of fact, but must satisfy themselves by inspection or otherwise as to their accuracy. No person in this firm's employment has the authority to make or give any representation or warranty in respect of the property.