



Flat 7, Old Inkerman Arms Inkerman Street, Luton, Bedfordshire, LU1 1JD
£800

- ONE BEDROOM
- OPEN PLAN LIVING
- 1 MINUTE WALK TO MALL AND SHOPS

- AVAILABLE LATE NOVEMBER 2025
- FITTED KITCHEN
- CALL NOW ON 01582 720 777

- TOWN CENTER LOCATION
- MUST BE VIEWED

**** P&R PROPERTY LETTINGS **** AVAILABLE NOVEMBER 2025 **** A LOVELY ONE BEDROOM APARTMENT LOCATED IN CENTRAL LUTON. *** TOWN CENTRE LOCATION *** FITTED KITCHEN *** CLOSE TO MALL AND SHOPS *** MUST BE VIEWED ***

The property benefits from accommodation comprising communal entrance with security entry, open plan living kitchen area, bedroom and shower room.

ENTRANCE HALL

Door to:

LIVING ROOM 11'9" X 11'6" (3.58M X 3.51M)

Double glazed velux window to front, fitted with a matching range of base and eye level units with worktop space over, sink unit with tiled splashbacks, space for fridge and washing machine, fitted electric oven, built-in four ring hob with extractor hood over.

BEDROOM 1 8'9" X 11'6" (2.67M X 3.51M)

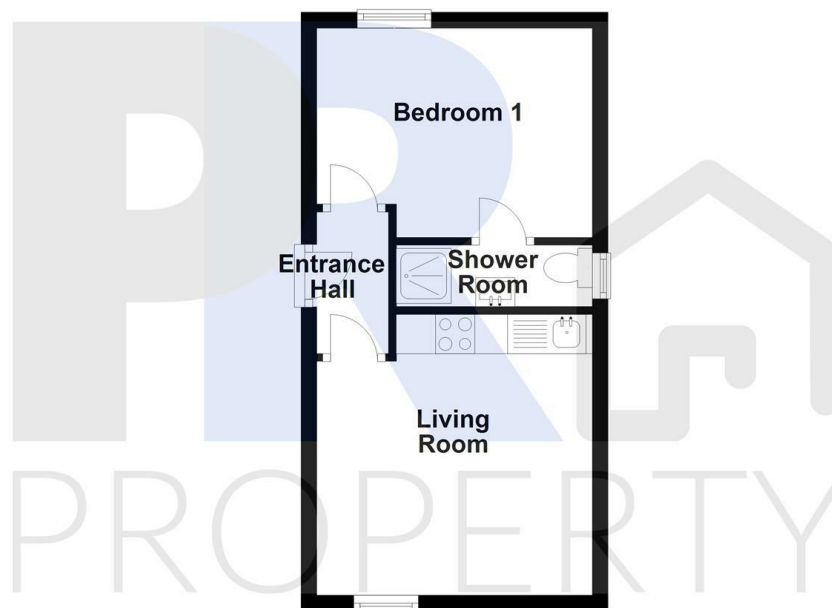
Double glazed velux window to rear, door to:

SHOWER ROOM

Shower, wash hand basin and WC, double glazed velux window to side.

Second Floor

Approx. 25.4 sq. metres (273.4 sq. feet)



Total area: approx. 25.4 sq. metres (273.4 sq. feet)

Flat 7 52 inkerman st

Energy Efficiency Rating		
	Current	Potential
Very energy efficient - lower running costs		
(92 plus) A		
(81-91) B		
(69-80) C	76	76
(55-68) D		
(39-54) E		
(21-38) F		
(1-20) G		
Not energy efficient - higher running costs		
England & Wales		EU Directive 2002/91/EC