



PR 
PROPERTY

5 Garfield Court Handcross Road, Luton, Bedfordshire, LU2 8JZ
£159,995

- SPACIOUS ONE BEDROOM
- GROUND FLOOR
- CLOSE TO AIRPORT

- LUXURY FINISH
- PARKING ON SITE
- CHAIN FREE

- LONG LEASE OVER 900 YEARS
- CLOSE TO M1
- MUST BE VIEWED

*** EXCLUSIVE TO PR PROPERTY SALES *** SPACIOUS ONE BEDROOM APARTMENT *** CHAIN FREE *** LONG LEASE OVER 900 YEARS *** LOW ANNUAL CHARGES *** GREAT MODERN CONDITION *** PARKING ON SITE *** BTL POTENTIAL £1000 PCM *** CLOSE TO LUTON AIRPORT AND PARKWAY STATION *** CLOSE TO M1 *** MUST BE VIEWED ***

This property benefits from accommodation comprising of entrance hall, living room, kitchen, double bedroom and family bathroom.

HALL

LIVING ROOM 16'7" X 10'8" (5.06M X 3.26M)

Window to rear, door to:

KITCHEN AREA 5'8" X 8'7" (1.73M X 2.62M)

Open plan.

BEDROOM 13'5" X 9'1" (4.08M X 2.77M)

Window to rear, Storage cupboard, sliding door, door to:

BATHROOM

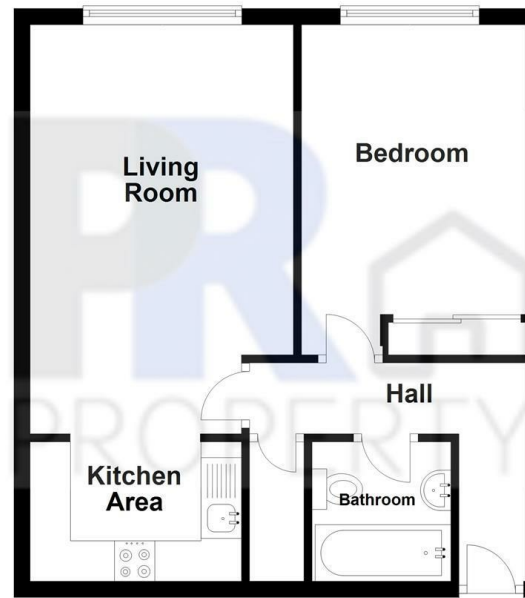
Door to:

CUPBOARD

Door to:

Ground Floor

Approx. 42.2 sq. metres (454.7 sq. feet)



Total area: approx. 42.2 sq. metres (454.7 sq. feet)

5 Garfield Court, Luton

Energy Efficiency Rating		Current	Potential
Very energy efficient - lower running costs			
(92 plus) A			
(81-91) B			
(69-80) C			
(55-68) D			
(39-54) E		44	58
(21-38) F			
(1-20) G			
Not energy efficient - higher running costs			
England & Wales		EU Directive 2002/91/EC	