



179 Buckingham Drive, Luton, Bedfordshire, LU2 9RE
£1,600 PCM

- THREE BEDROOMS
- PRIVATE REAR GARDEN
- CLOSE TO SCHOOLS

- OPEN PLAN LIVING
- MODERN KITCHEN
- MUST BE VIEWED

- ON DRIVE PARKING
- CLOSE TO M1 AND AIRPORT
- AVAILABLE JULY 2024

*** P&R PROPERTY LETTINGS *** SPACIOUS THREE BEDROOM HOUSE *** ON DRIVE PARKING *** PRIVATE REAR GARDEN *** GREAT CONDITION THROUGHOUT *** MODERN KITCHEN & BATHROOM *** INTEGRATED COOKER & FRIDGE FREEZER *** CLOSE TO M1 AND AIRPORT *** OPEN PLAN LIVING *** MUST BE VIEWED *** AVAILABLE JULY 2024 ***

PORCH

LOUNGE / DINER 21'05 X 12'11 (6.53M X 3.94M)

KITCHEN 9'03 X 8'05 (2.82M X 2.57M)

BEDROOM ONE 12'06 X 9'02 (3.81M X 2.79M)

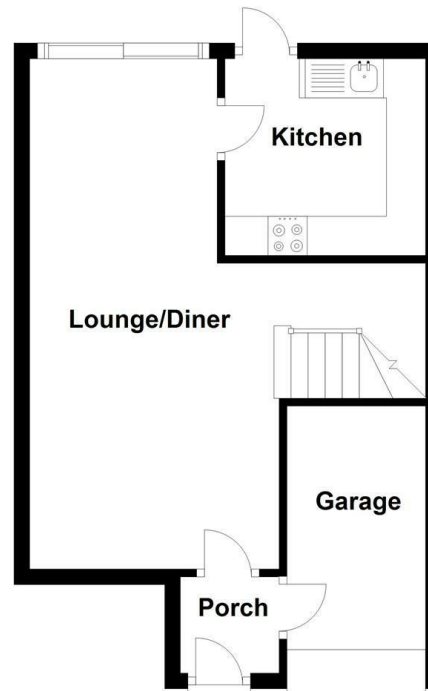
BEDROOM TWO 9'07 X 9'05 (2.92M X 2.87M)

BEDROOM THREE 9'01 X 8'08 (2.77M X 2.64M)

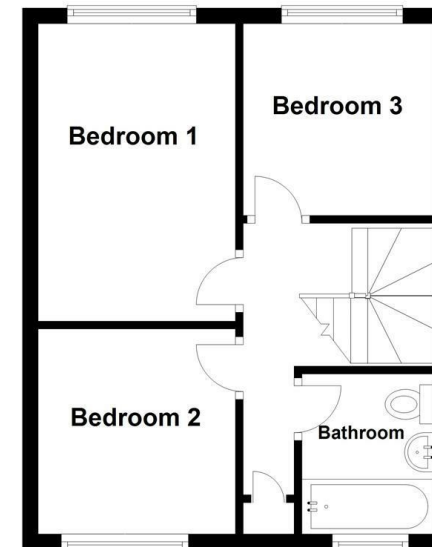
BATHROOM

GARAGE / STORAGE ROOM

Ground Floor



First Floor



| Energy Efficiency Rating | | Current | Potential |
|---|---|-------------------------|-----------|
| Very energy efficient - lower running costs | | | |
| (92 plus) | A | | 87 |
| (81-91) | B | | |
| (69-80) | C | | |
| (55-68) | D | 62 | |
| (39-54) | E | | |
| (21-38) | F | | |
| (1-20) | G | | |
| Not energy efficient - higher running costs | | | |
| England & Wales | | EU Directive 2002/91/EC | |