



5 Bedford Gardens, Luton, LU3 1BX
£230,000



5 Bedford Gardens, Luton, LU3 1BX

*** EXCLUSIVE TO PR PROPERTY SALES *** SPACIOUS TWO BEDROOM APARTMENT *** LONG LEASE - OVER 970 YEARS *** LOW ANNUAL CHARGES *** BEAUTIFULLY KEPT COMMUNAL GARDENS *** GARAGE AND PARKING ON SITE *** PRIVATE GATED SECURITY ENTRANCE *** TWO DOUBLE BEDROOMS *** MODERN KITCHEN AND BATHROOM *** BALCONY TERRACE WITH GREAT VIEWS *** EXTERNAL STORAGE UNIT INCLUDED *** CLOSE TO LUTON TOWN CENTRE AND STATION *** BTL POTENTIAL £1400PCM *** MUST BE VIEWED ***

This property benefits from accommodation comprising of entrance hallway, living room, kitchen, two double bedrooms, family bathroom, outdoor storage unit, communal gardens, parking and garage.

HALLWAY

LIVING ROOM 16'06 X 12'05
(5.03M X 3.78M)

KITCHEN 7'02 X 10'06 (2.18M X 3.20M)

BEDROOM ONE 11'02 X 8'11
(3.40M X 2.72M)

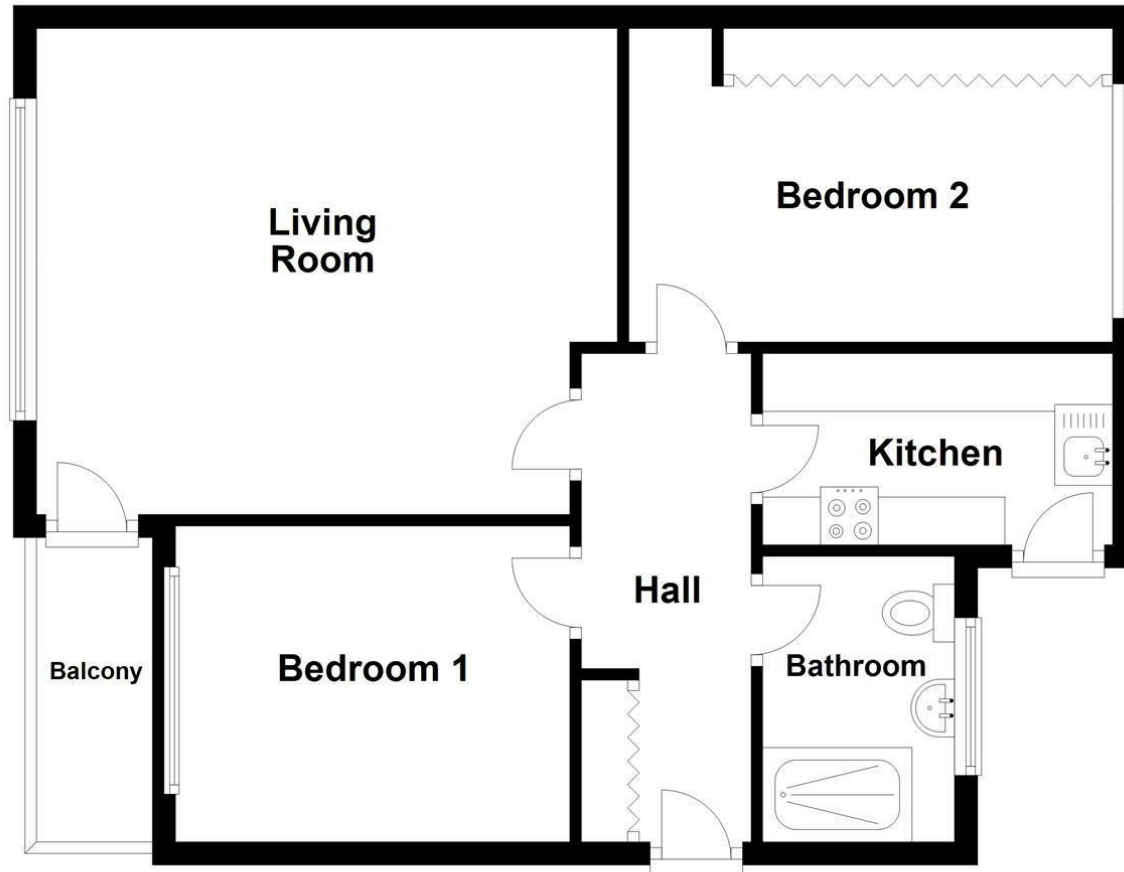
BEDROOM TWO 8'11 X 14'05
(2.72M X 4.39M)

BATHROOM

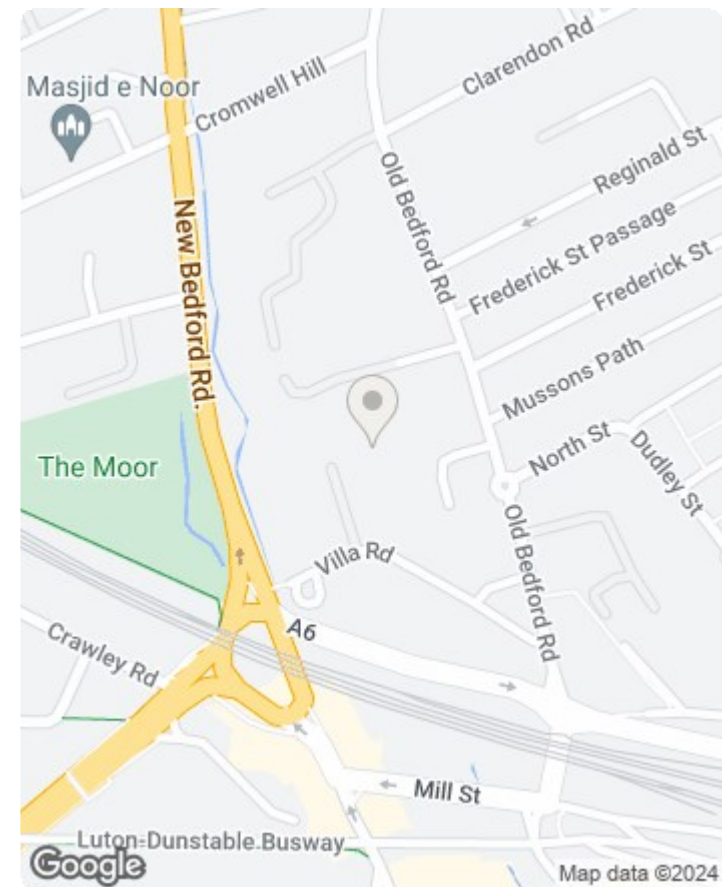


Second Floor

Approx. 58.6 sq. metres (631.2 sq. feet)



Total area: approx. 58.6 sq. metres (631.2 sq. feet)



Energy Efficiency Rating		
	Current	Potential
Very energy efficient - lower running costs		
(92 plus) A		
(81-91) B		
(69-80) C		
(55-68) D		
(39-54) E		
(21-38) F		
(1-20) G		
Not energy efficient - higher running costs		
England & Wales	EU Directive 2002/91/EC	

