



LOVE YOUR HOME

SALES // LETTINGS // PROPERTY MANAGEMENT



13 68 Fairthorn Road, Charlton, London, SE7 7FS  
£1,625 Per month



13 68 Fairthorn Road, Charlton, London, SE7 7FS

**£1,625 Per month**

New to the market is this modern and beautifully presented one bedroom apartment on the 3rd floor in Fairthorn Road, SE7. Set within a quiet development at the end of Fairthorn Road.

With a great sized open plan living room and kitchen, leading on to a private balcony with views of the local area from the 3rd floor.

Offered furnished and available at the end of October.

Walking distance to Westcombe Park British Rail station and from bus links from Woolwich Road nearby, direct into Central London and the surrounding areas including North Greenwich and the center of Greenwich.

## Description

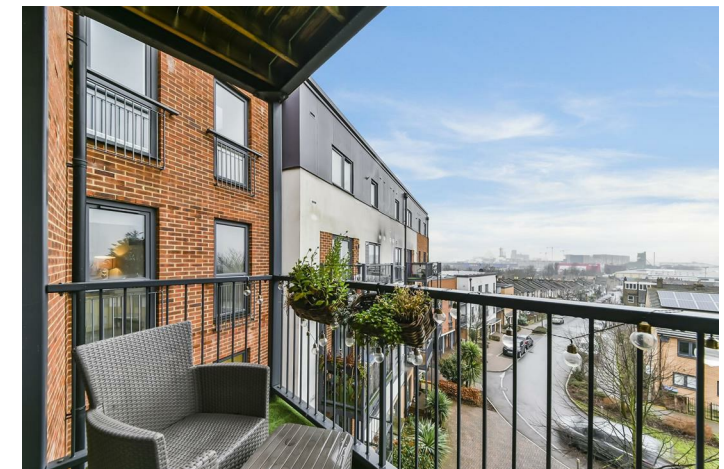
New to the market is this modern and beautifully presented one bedroom apartment on the 3rd floor in Fairthorn Road, SE7. Set within a quiet development at the end of Fairthorn Road.

With a great sized open plan living room and kitchen, leading on to a private balcony with views of the local area from the 3rd floor.

Offered furnished and available at the end of May.

## Situation

Walking distance to Westcombe Park British Rail station and from bus links from Woolwich Road nearby, direct into Central London and the surrounding areas including North Greenwich and the center of Greenwich.

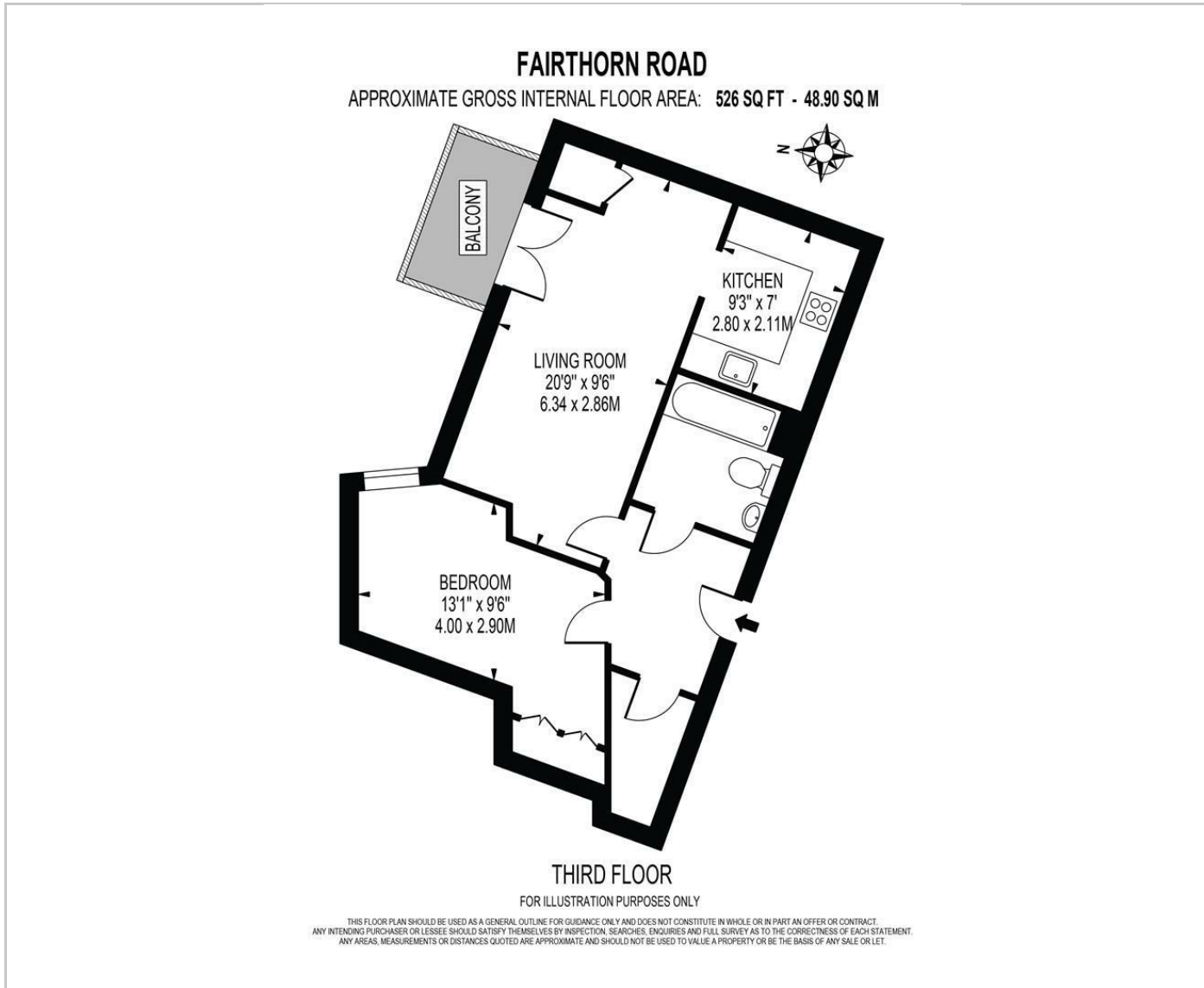


Furnished

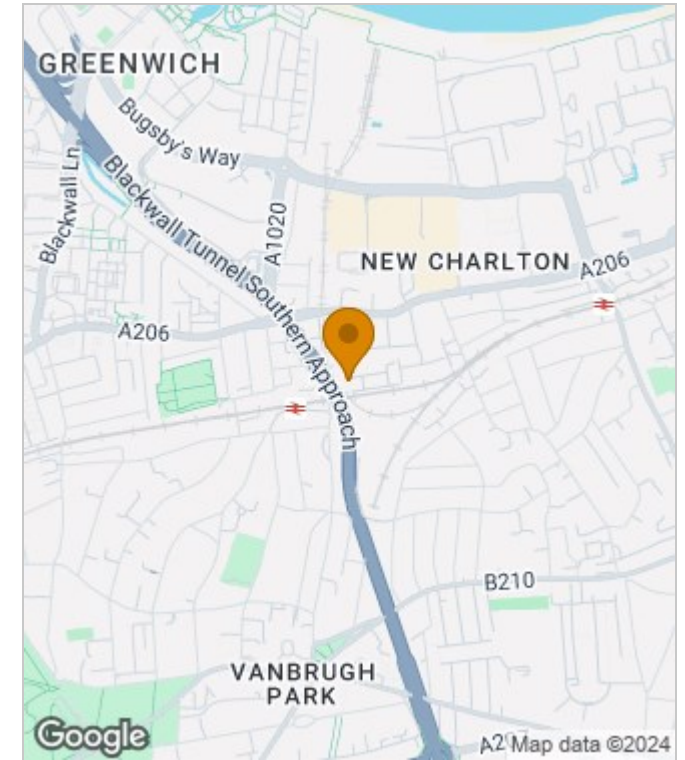
Council Tax Band: B

Available: 31st October 2024

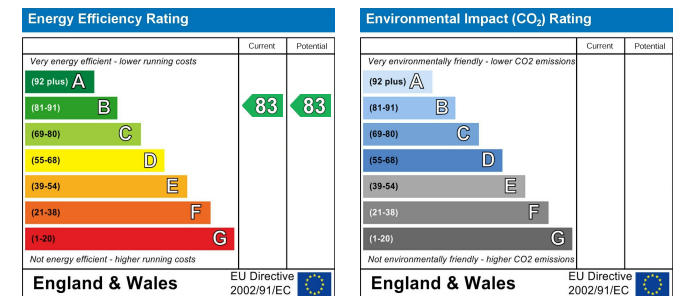
## Floor Plans



## Area Map



## Energy Performance Graph



These particulars, whilst believed to be accurate are set out as a general outline only for guidance and do not constitute any part of an offer or contract. Intending purchasers should not rely on them as statements of representation of fact, but must satisfy themselves by inspection or otherwise as to their accuracy. No person in this firm's employment has the authority to make or give any representation or warranty in respect of the property.

The Nucleus Brunel Way, Dartford, Kent, DA1 5GA

Tel: 02081758868 Email: [property@loveyourhomeonline.com](mailto:property@loveyourhomeonline.com) <http://www.loveyourhomeonline.com>