



29 4 Lambarde Square, Greenwich, London, SE10 9GB
£1,900 Per month



29 4 Lambarde Square, Greenwich, London, SE10 9GB

£1,900 Per month

Fourth floor one bed apartment overlooking the courtyard in Greenwich Square.

Benefitting from an onsite Sainsburys local, a Costa Coffee, yoga studios, hairdressers, dentist and a leisure center (payable separately and run by Greenwich Council).

Available from 3rd December and offered furnished.

Description

Fourth floor one bed apartment overlooking the courtyard in Greenwich Square.

Benefitting from an onsite Sainsburys local, a Costa Coffee, yoga studios, hairdressers, dentist and a leisure center (payable separately and run by Greenwich Council).

Available from 3rd December and offered furnished.

Situation

Located in Greenwich Square with excellent transport links by bus, train, underground and DLR all nearby.

Only a short walk to Greenwich Royal Park and the restaurants, shops and market in central Greenwich.

Furnished

Council Tax Band: E

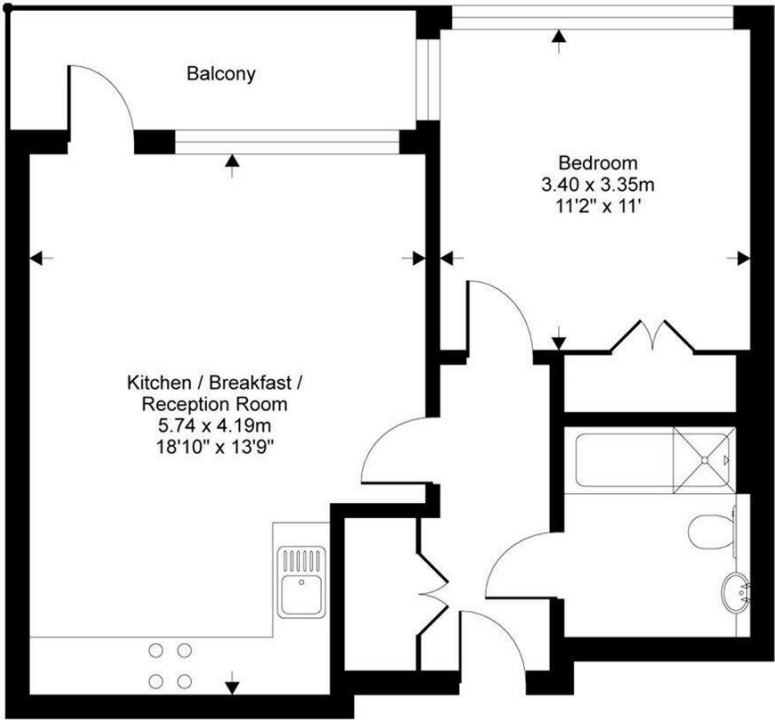
Available: 6th December 2025



Floor Plans

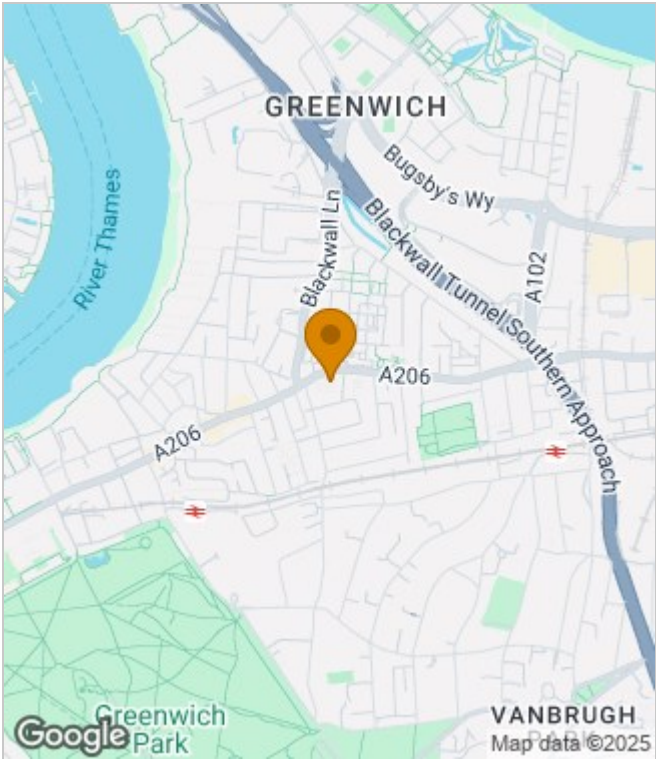
Lambarde Square, London, SE10

Gross internal floor area (approx):
500 sq m / 46.4 sq ft
For Identification only - Not to scale
Niche Communications

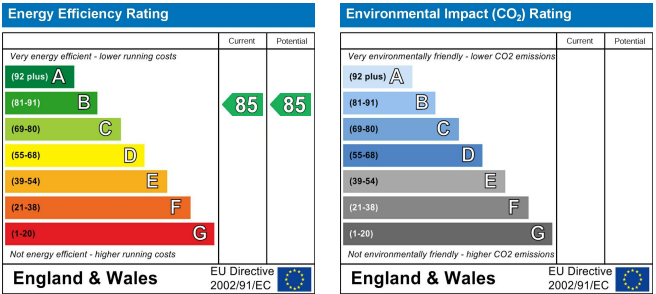


Fourth floor

Area Map



Energy Performance Graph



These particulars, whilst believed to be accurate are set out as a general outline only for guidance and do not constitute any part of an offer or contract. Intending purchasers should not rely on them as statements of representation of fact, but must satisfy themselves by inspection or otherwise as to their accuracy. No person in this firms employment has the authority to make or give any representation or warranty in respect of the property.