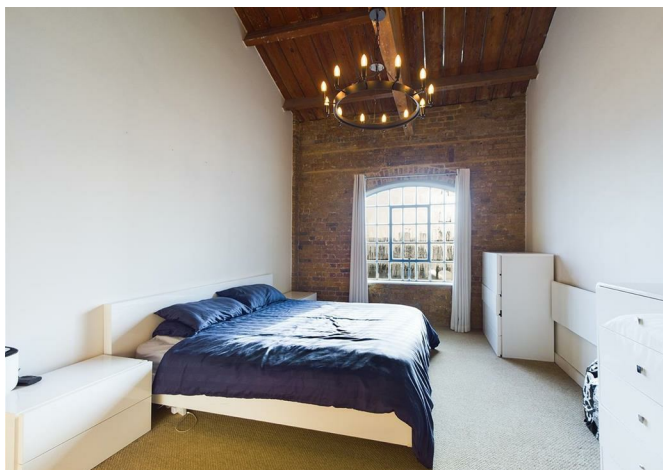




30 Warehouse W, 3 Western Gateway, London, E16 1BD
£2,850 Per month



30 Warehouse W, 3 Western Gateway, London, E16 1BD

£2,850 Per month

Located in the Royal Docks, is this amazing modern, yet still full of character, two bedroom, two bathroom apartment in the Warehouse W development in E16.

Description

With two bedrooms, an open plan kitchen and living room, 2 bathrooms and is situated on both the 3rd and 4th floors with dock views. Also benefitting from an additional home office area, perfect for current conditions.

Offered furnished. And benefits from a parking space.

Available 5th May.

Situation

Located in the Royal Docks, is this amazing modern, yet still full of character, two bedroom, two bathroom apartment in the Warehouse W development in E16.

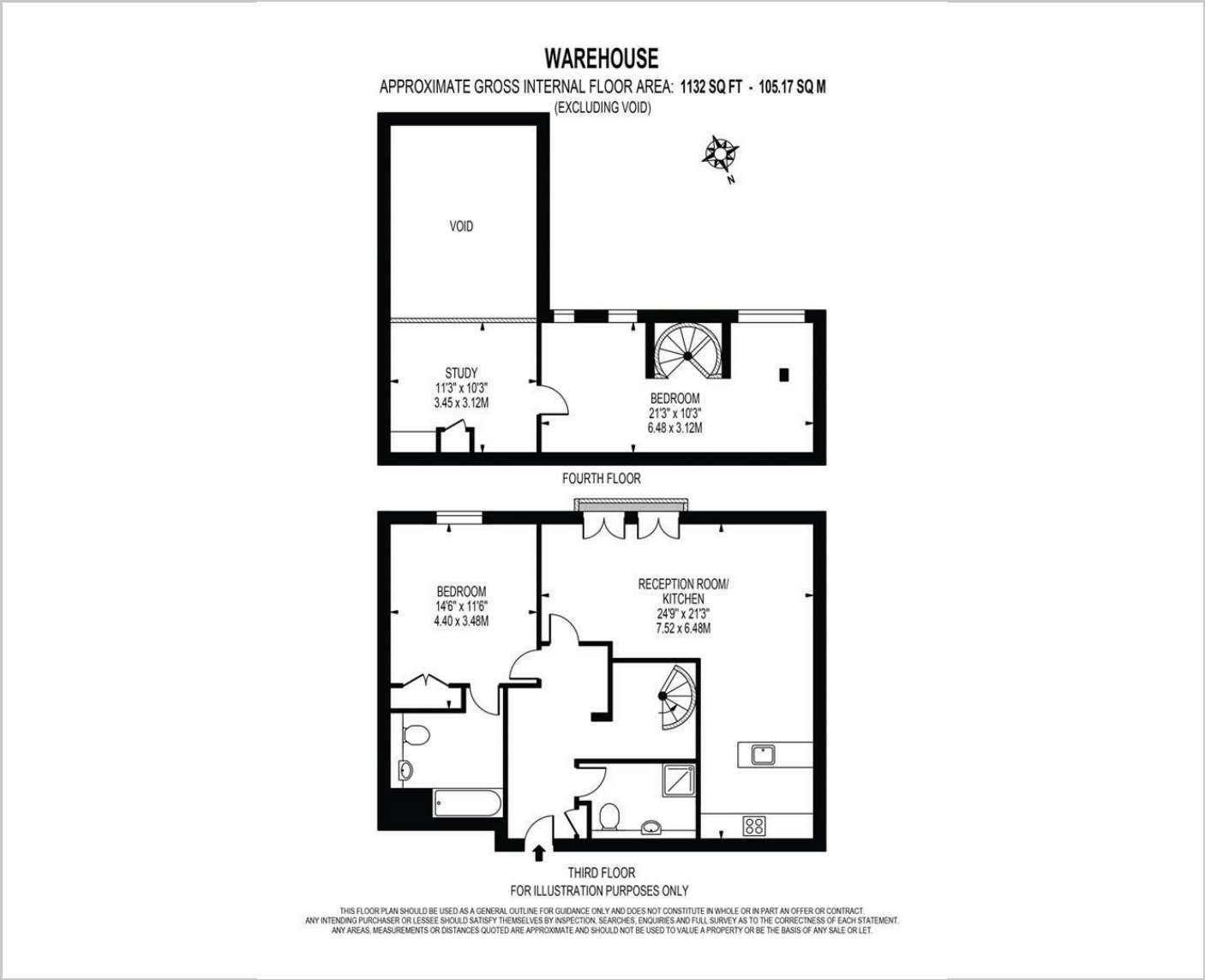
Furnished

Council Tax Band: F

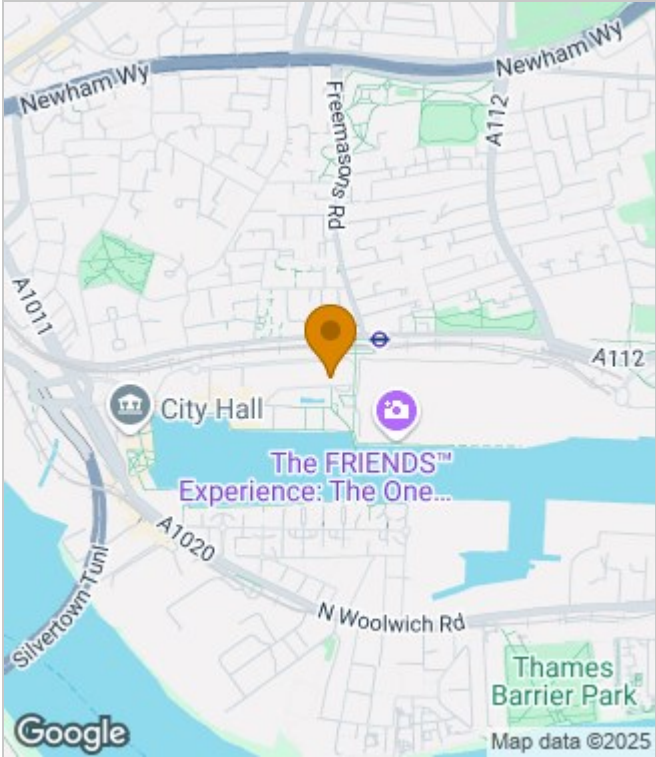
Available: 21st June 2025



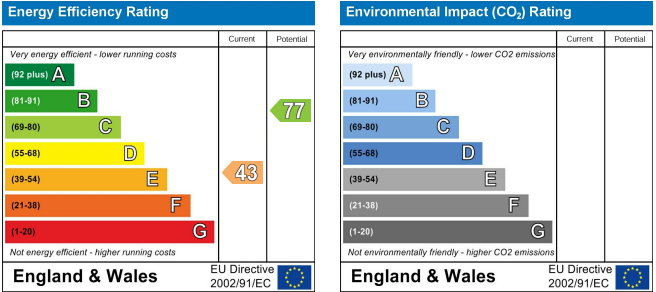
Floor Plans



Area Map



Energy Performance Graph



These particulars, whilst believed to be accurate are set out as a general outline only for guidance and do not constitute any part of an offer or contract. Intending purchasers should not rely on them as statements of representation of fact, but must satisfy themselves by inspection or otherwise as to their accuracy. No person in this firms employment has the authority to make or give any representation or warranty in respect of the property.