



LOVE YOUR HOME

SALES // LETTINGS // PROPERTY MANAGEMENT



204 Sir John Soane Apartments, 20 Heygate Street, London, SE17 1FP
£2,400 Per month



204 Sir John Soane Apartments, 20 Heygate Street, London, SE17 1FP

£2,400 Per month

Presenting a stunning 1 bedroom apartment in the popular Elephant Park, situated on the 2nd floor, the property benefits from an open plan kitchen/living space, flooding with natural light, there is wood flooring throughout and the bedroom includes built in storage, the large south facing balcony overlooks the communal gardens offering scenic views.

Sir John Soane apartments is part of the popular Elephant park, benefits include, a 24 hour concierge, Residents Gym, Communal roof terrace, rooftop grow garden, communal gardens and 15th floor residents room.

The property is a few moments walk from transport links and is surrounded by an array of cafe's, bars, restaurants and supermarkets.

This property is sure to go quickly so contact us today to arrange a viewing.

Description

Presenting a stunning 1 bedroom apartment in the popular Elephant Park, situated on the 2nd floor, the property benefits from an open plan kitchen/living space, flooding with natural light, there is wood flooring throughout and the bedroom includes built in storage, the large south facing balcony overlooks the communal gardens offering scenic views.

Sir John Soane apartments is part of the popular Elephant park, benefits include, a 24 hour concierge, Residents Gym, Communal roof terrace, rooftop grow garden, communal gardens and 15th floor residents room.

Situation

The property is a few moments walk from transport links and is surrounded by an array of cafe's, bars, restaurants and supermarkets.

This property is sure to go quickly so contact us today to arrange a viewing.

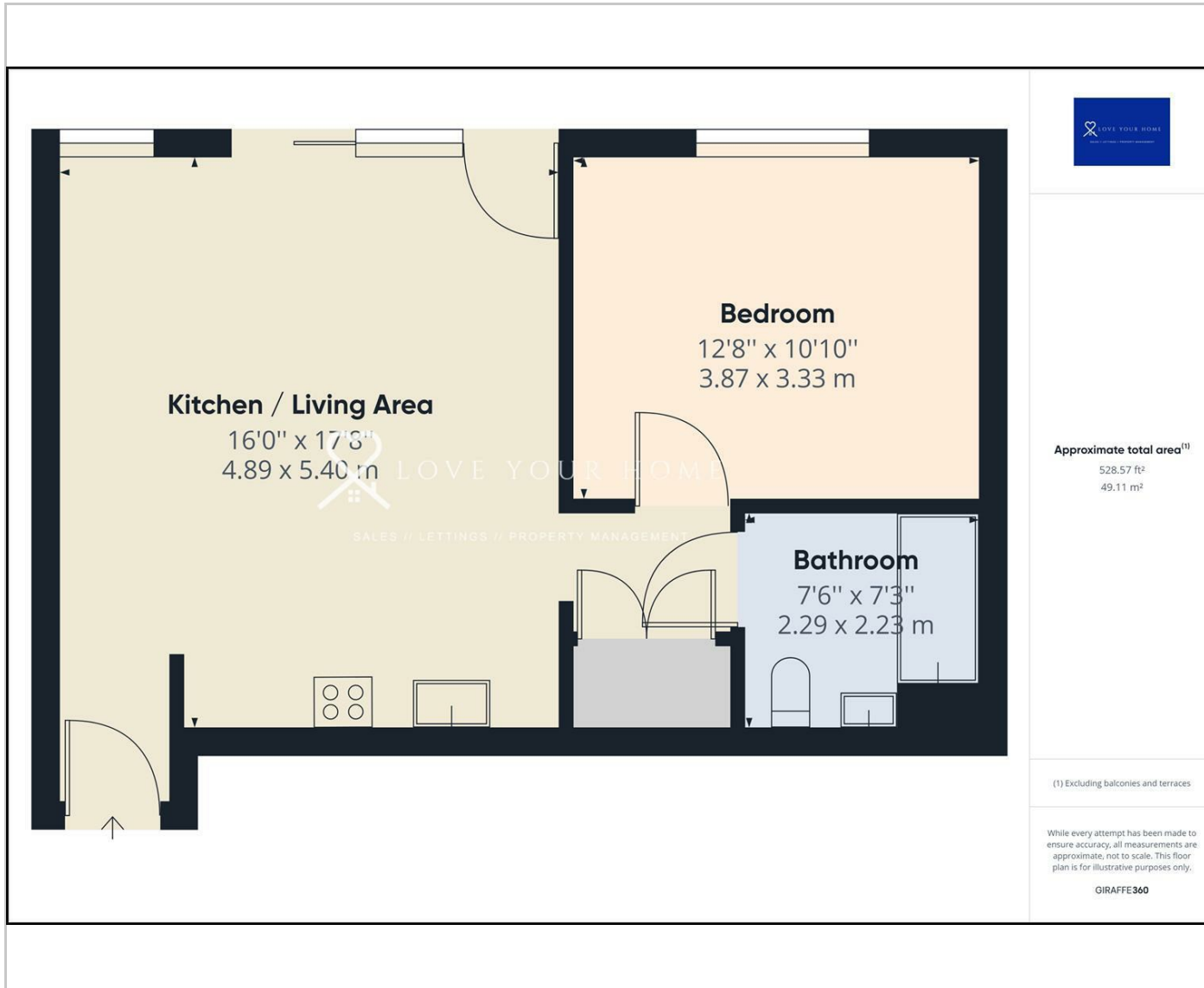


Furnished

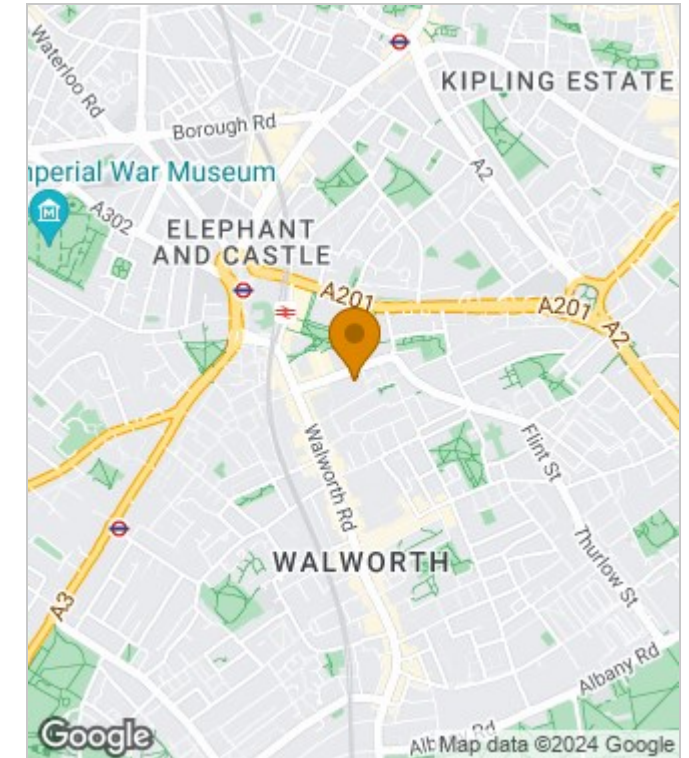
Council Tax Band: D

Available: 11th July 2022

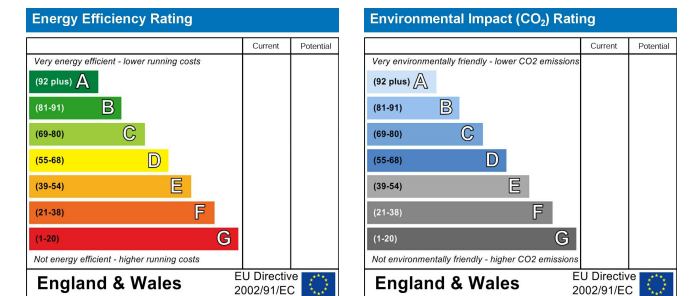
Floor Plans



Area Map



Energy Performance Graph



These particulars, whilst believed to be accurate are set out as a general outline only for guidance and do not constitute any part of an offer or contract. Intending purchasers should not rely on them as statements of representation of fact, but must satisfy themselves by inspection or otherwise as to their accuracy. No person in this firm's employment has the authority to make or give any representation or warranty in respect of the property.

The Nucleus Brunel Way, Dartford, Kent, DA1 5GA

Tel: 02081758868 Email: property@loveyourhomeonline.com <http://www.loveyourhomeonline.com>