



LOVE YOUR HOME

SALES // LETTINGS // PROPERTY MANAGEMENT



32 Hobart Close, Chelmsford, CM1 2ES  
£1,400 Per month



## 32 Hobart Close, Chelmsford, CM1 2ES

**£1,400 Per month**

Discover the comfort and convenience of this spacious 2 bedroom, 2-bathroom ground floor apartment at Hobart Close. Ideally located in a prime Chelmsford neighbourhood, this contemporary residence offers cosy living spaces, and easy access to local amenities, making it an excellent choice for professionals and small families.

**Main Bedroom:** Enjoy the space and comfort of a generously sized main bedroom with ample privacy and relaxation.

**Office/2nd Bedroom:** This apartment includes a versatile office or 2nd bedroom, ideal for a home office or a cosy guest room.

**Two Bathrooms:** The apartment features two modern bathrooms for added convenience and flexibility.

**Open-Plan Living:** The open-plan living area is designed for modern living, filled with natural light and ready for your personal touch.

**Modern Kitchen:** The fully-equipped kitchen features built in appliances, plenty of storage, and a practical layout, making meal preparation a breeze.

**Convenient Location:** Located in a well-connected area, you'll have easy access to local shops, schools, parks, and Chelmsford's vibrant city center.

**Transport Links:** Excellent transport links, including train and bus services, are nearby, ensuring an easy commute.

## Description

Discover the comfort and convenience of this spacious 2 bedroom, 2-bathroom ground floor apartment at Hobart Close. Ideally located in a prime Chelmsford neighbourhood, this contemporary residence offers cosy living spaces, and easy access to local amenities, making it an excellent choice for professionals and small families.

**Main Bedroom:** Enjoy the space and comfort of a generously sized main bedroom with ample privacy and relaxation.

**Office/2nd Bedroom:** This apartment includes a versatile office or 2nd bedroom, ideal for a home office or a cosy guest room.

**Two Bathrooms:** The apartment features two modern bathrooms for added convenience and flexibility.

**Open-Plan Living:** The open-plan living area is designed for modern living, filled with natural light and ready for your personal touch.

**Modern Kitchen:** The fully-equipped kitchen features built in appliances, plenty of storage, and a practical layout, making meal preparation a breeze.

**Convenient Location:** Located in a well-connected area, you'll have easy access to local shops, schools, parks, and Chelmsford's vibrant city center.

**Transport Links:** Excellent transport links, including train and bus services, are nearby, ensuring an easy commute.

## Situation

This ground floor apartment is situated in a highly desirable area of Chelmsford, offering easy access to local amenities and transportation options. Chelmsford city center is just a short commute away, providing a wide range of shopping, dining, and entertainment options. Families will appreciate the proximity to schools and parks, making this property an excellent fit for various lifestyles.

To arrange a viewing or for more information about this property, please contact us at LoveYourHome.

Don't miss the opportunity to make this modern Chelmsford apartment your new home! Contact us today to schedule a viewing and experience the comfort and convenience of Hobart Close for yourself.

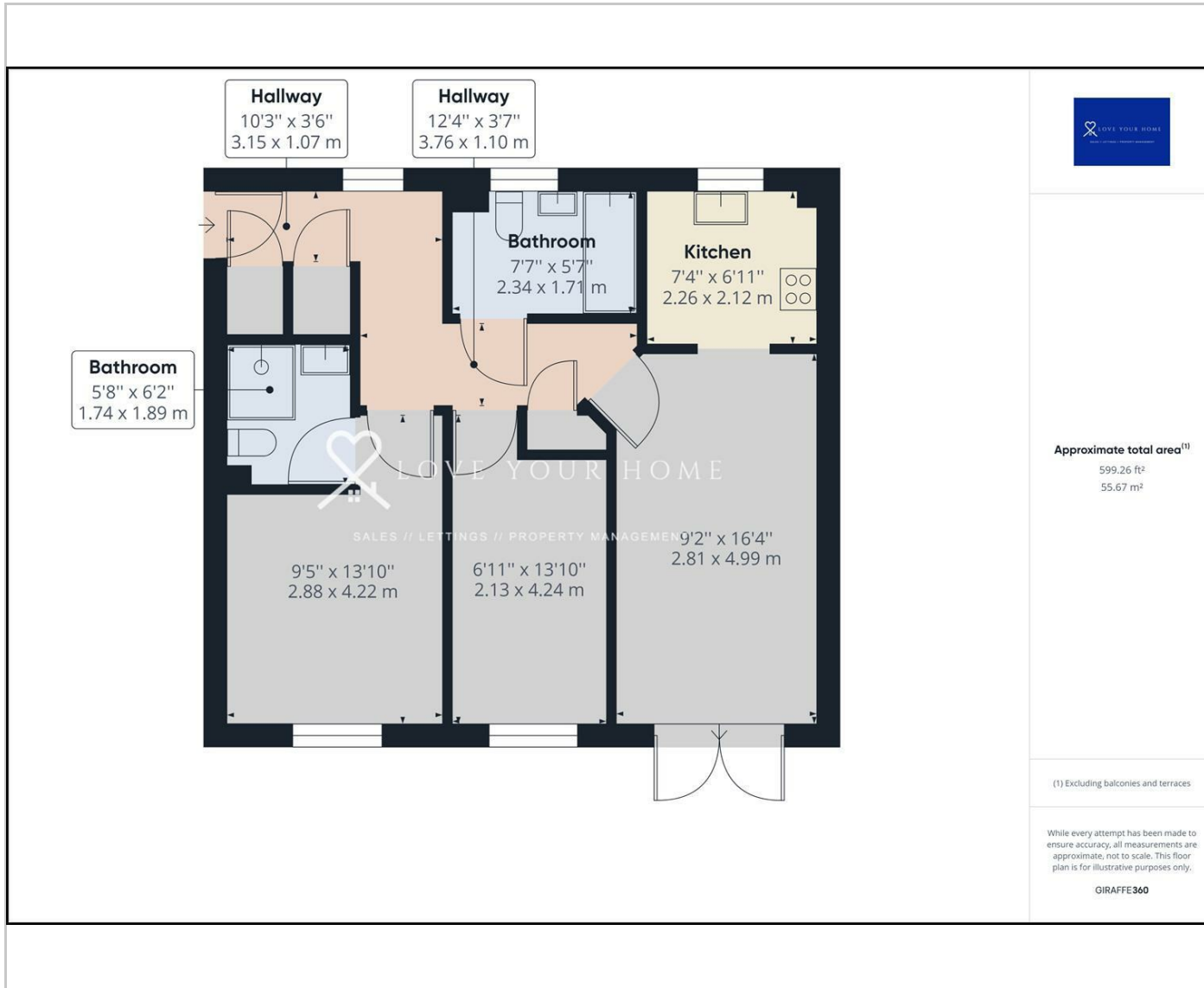
Unfurnished

Council Tax Band: C

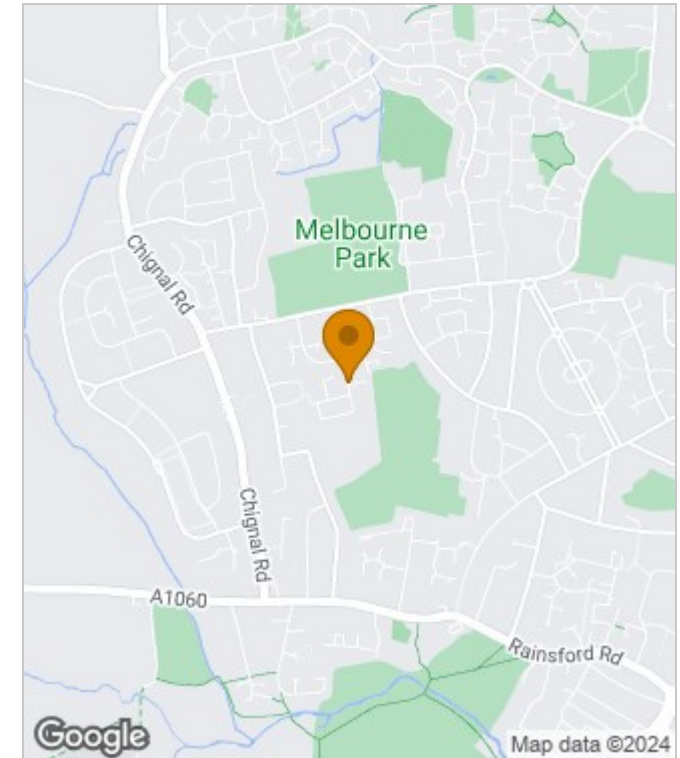
Available: 31st May 2024



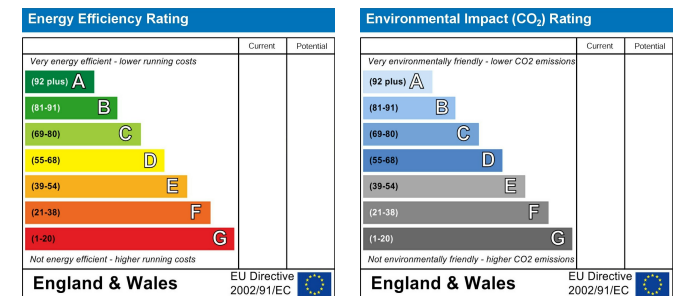
## Floor Plans



## Area Map



## Energy Performance Graph



These particulars, whilst believed to be accurate are set out as a general outline only for guidance and do not constitute any part of an offer or contract. Intending purchasers should not rely on them as statements of representation of fact, but must satisfy themselves by inspection or otherwise as to their accuracy. No person in this firm's employment has the authority to make or give any representation or warranty in respect of the property.