



LOVE YOUR HOME

SALES // LETTINGS // PROPERTY MANAGEMENT

3303, Valencia Tower 250 City Road, London, EC1V 2AB
£3,791 Per month



3303, Valencia Tower 250 City Road, London, EC1V 2AB

£3,791 Per month

Experience Elevated Living at Valencia Tower, 250 City Road!

Ascend to the 33rd floor of this sought-after development and behold the epitome of luxurious urban living. Nestled between Angel and Old Street Station, this two-bedroom sanctuary invites you into a world where every detail is crafted for opulence and comfort.

A Skyline Oasis

Greeted by floor-to-ceiling windows that embrace natural light, this home offers a cinematic view of the London skyline. The open-plan kitchen and living area are not just spaces; they are canvases showcasing London's iconic vistas. Engineered wooden flooring seamlessly connects these spaces, exuding a sense of effortless sophistication.

Elevated Elegance

Indulge in a fully integrated kitchen adorned with a wine fridge and sleek cabinetry that elevate the art of culinary sophistication. Both bedrooms, generously sized and adorned with built-in wardrobes, offer ample

Description

Experience Elevated Living at Valencia Tower, 250 City Road!

Ascend to the 33rd floor of this sought-after development and behold the epitome of luxurious urban living. Nestled between Angel and Old Street Station, this two-bedroom sanctuary invites you into a world where every detail is crafted for opulence and comfort.

A Skyline Oasis

Greeted by floor-to-ceiling windows that embrace natural light, this home offers a cinematic view of the London skyline. The open-plan kitchen and living area are not just spaces; they are canvases showcasing London's iconic vistas. Engineered wooden flooring seamlessly connects these spaces, exuding a sense of effortless sophistication.

Elevated Elegance

Indulge in a fully integrated kitchen adorned with a wine fridge and sleek cabinetry that elevate the art of culinary sophistication. Both bedrooms, generously sized and adorned with built-in wardrobes, offer ample storage to complement their comfort.

Situation

Bathed in Luxury

Experience indulgence with an impeccably designed bathroom featuring marble tiling, an overhead shower, heated towel rail, and a vanity unit boasting LED lighting. Storage is ingeniously incorporated, ensuring a clutter-free ambiance.

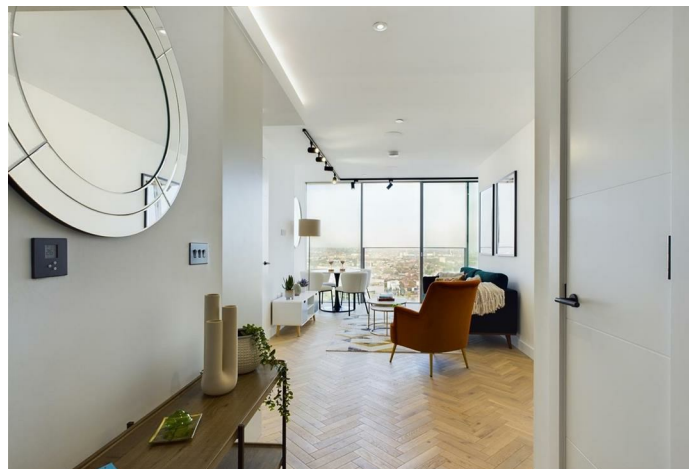
A World-Class Address

250 City Road, a creation by the illustrious Foster + Partners, resides in Zone 1 and redefines luxury living. This landmark development offers more than just exceptional residences. It boasts a plethora of resident amenities, including a state-of-the-art gym, a serene terrace, and a magnificent 20-meter swimming pool and spa for relaxation. Enjoy the convenience of concierge services and revel in the sophisticated residents' lounge, games rooms, and a reading room.

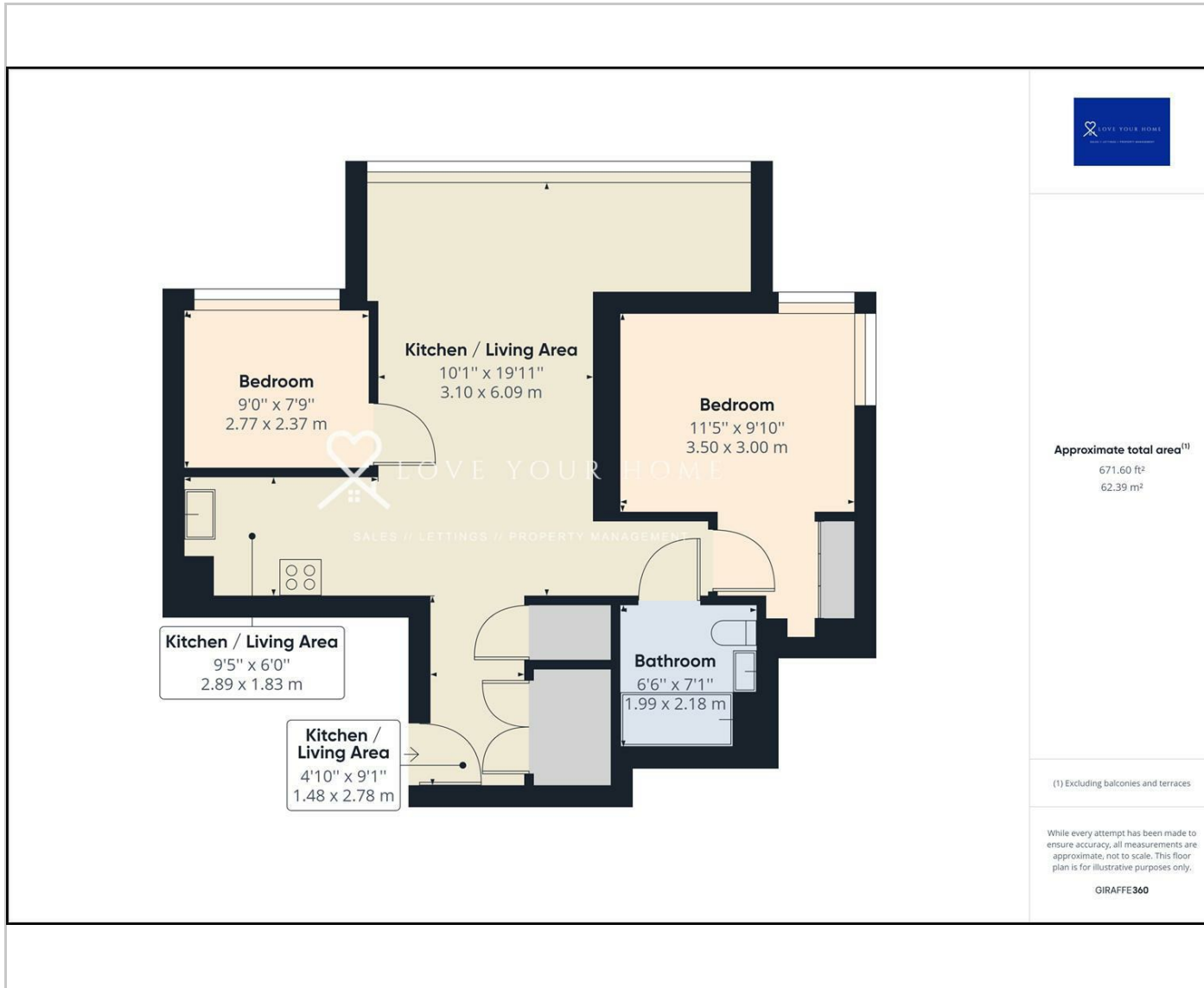
Furnished

Council Tax Band: New Build

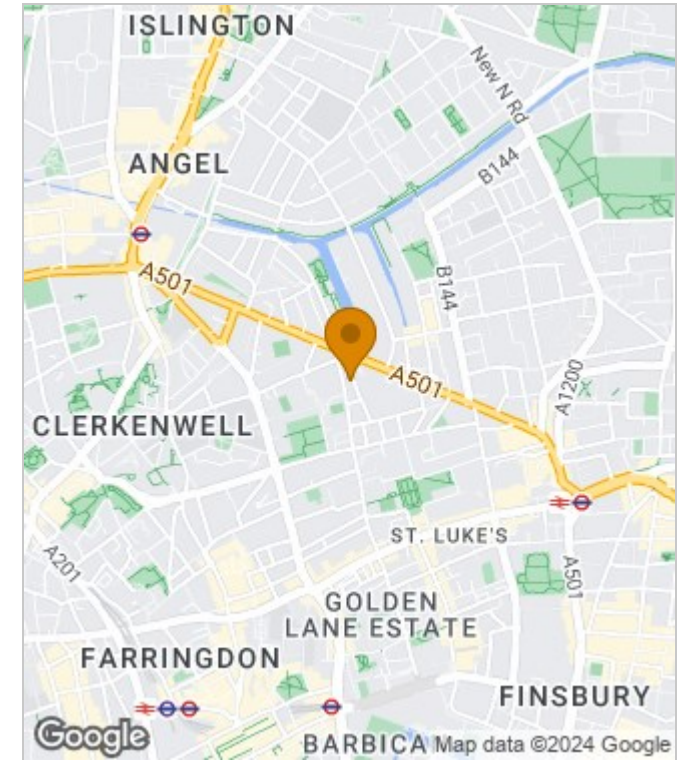
Available: 12th May 2024



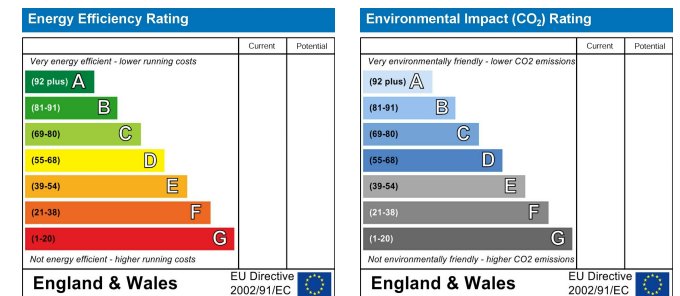
Floor Plans



Area Map



Energy Performance Graph



These particulars, whilst believed to be accurate are set out as a general outline only for guidance and do not constitute any part of an offer or contract. Intending purchasers should not rely on them as statements of representation of fact, but must satisfy themselves by inspection or otherwise as to their accuracy. No person in this firm's employment has the authority to make or give any representation or warranty in respect of the property.

The Nucleus Brunel Way, Dartford, Kent, DA1 5GA

Tel: 02081758868 Email: property@loveyourhomeonline.com <http://www.loveyourhomeonline.com>