



LOVE YOUR HOME

SALES // LETTINGS // PROPERTY MANAGEMENT



18 Dowells Street, London, SE10 9FS
£3,000 Per month



18 Dowells Street, London, SE10 9FS

£3,000 Per month

Welcome to Your Riverside Retreat in New Capital Quay, Greenwich

Discover the epitome of modern living in this stunning 3-bedroom apartment nestled within the prestigious New Capital Quay development. Situated in the heart of historic Greenwich, this riverside haven offers contemporary comfort and convenience, combined with the timeless charm of one of London's most iconic neighborhoods.

Key Features:

- Spacious open-plan living area with ample natural light, providing the perfect setting for relaxation and entertainment.
- Modern kitchen with integrated appliances, ideal for whipping up culinary delights and hosting gatherings with friends and family.
- Luxurious master bedroom with ensuite bathroom, offering a peaceful sanctuary for rest and rejuvenation.
- Two additional bedrooms, each with their own balcony, providing intimate outdoor spaces to soak in the atmosphere of the vibrant neighborhood.
- Family bathroom with sleek fixtures and fittings, ensuring comfort and convenience for everyday living.
- Furnished to a high standard with contemporary decor and quality finishes throughout, offering both style and comfort.

Description

Welcome to Your Riverside Retreat in New Capital Quay, Greenwich

Discover the epitome of modern living in this stunning 3-bedroom apartment nestled within the prestigious New Capital Quay development. Situated in the heart of historic Greenwich, this riverside haven offers contemporary comfort and convenience, combined with the timeless charm of one of London's most iconic neighborhoods.

Key Features:

Spacious open-plan living area with ample natural light, providing the perfect setting for relaxation and entertainment.

Modern kitchen with integrated appliances, ideal for whipping up culinary delights and hosting gatherings with friends and family.

Luxurious master bedroom with ensuite bathroom, offering a peaceful sanctuary for rest and rejuvenation.

Two additional bedrooms, each with their own balcony, providing intimate outdoor spaces to soak in the atmosphere of the vibrant neighborhood.

Family bathroom with sleek fixtures and fittings, ensuring comfort and convenience for everyday living.

Furnished to a high standard with contemporary decor and quality finishes throughout, offering both style and comfort.

Situation

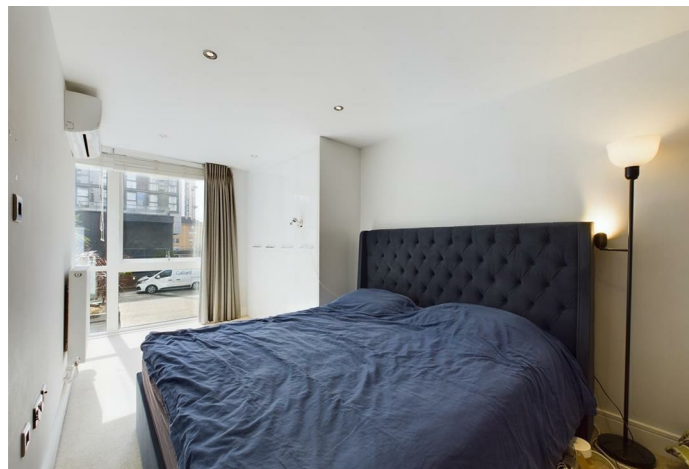
Explore the rich tapestry of Greenwich living, with landmarks such as the iconic Cutty Sark, historic Greenwich Park, and the bustling Greenwich Market right on your doorstep. Indulge in shopping at the nearby Waitrose store or take a leisurely stroll along the picturesque riverside promenade.

Experience the best of London living at New Capital Quay - schedule a viewing today and make this exceptional apartment your new home!

Furnished

Council Tax Band: F

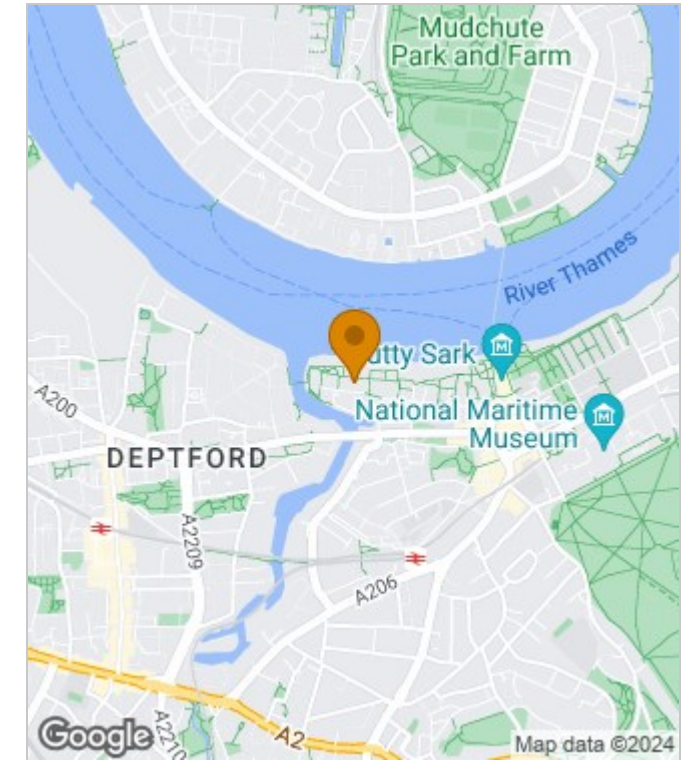
Available: 17th May 2024



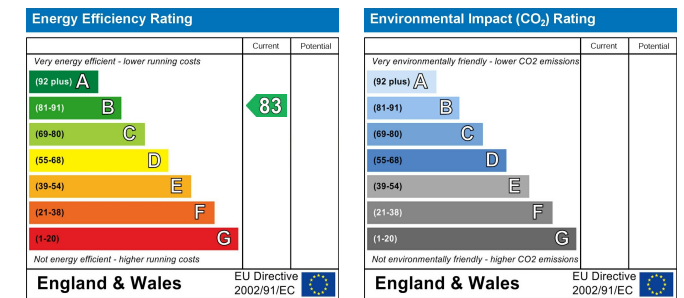
Floor Plans



Area Map



Energy Performance Graph



These particulars, whilst believed to be accurate are set out as a general outline only for guidance and do not constitute any part of an offer or contract. Intending purchasers should not rely on them as statements of representation of fact, but must satisfy themselves by inspection or otherwise as to their accuracy. No person in this firm's employment has the authority to make or give any representation or warranty in respect of the property.

The Nucleus Brunel Way, Dartford, Kent, DA1 5GA

Tel: 02081758868 Email: property@loveyourhomeonline.com <http://www.loveyourhomeonline.com>