

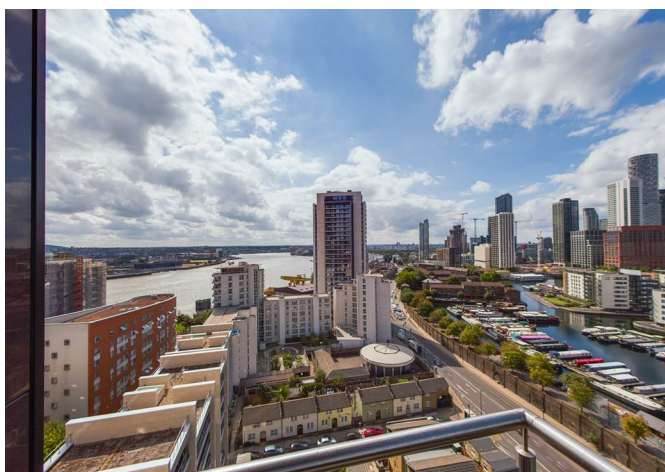


LOVE YOUR HOME

SALES // LETTINGS // PROPERTY MANAGEMENT



1903, Streamlight Tower, 9 Province Square, Canary Wharf, London, E14 9DW  
**£500,000**



## 1903, Streamlight Tower, 9 Province Square, Canary Wharf, London, E14 9DW

**£500,000**

This flat in Streamlight Tower offers modern living in a prime location within London's Isle of Dogs. Situated on the 19th floor, the property provides impressive views of Canary Wharf and the River Thames, creating a bright and airy atmosphere throughout.

### Key Features:

**Sweeping Views:** Enjoy stunning panoramic vistas from the comfort of home, with large windows flooding the space with natural light.

**Contemporary Design:** The open-plan layout connects the living, dining, and kitchen areas, with sleek finishes.

**Comfortable Bedrooms:** The property includes spacious bedrooms, with the master bedroom featuring an en-suite bathroom.

**Convenient Location:** Close proximity to Canary Wharf offers easy access to a variety of amenities, including shops, restaurants, and transport links.

## Description

This flat in Streamlight Tower offers modern living in a prime location within London's Isle of Dogs. Situated on the 19th floor, the property provides impressive views of Canary Wharf and the River Thames, creating a bright and airy atmosphere throughout.

### Key Features:

**Sweeping Views:** Enjoy stunning panoramic vistas from the comfort of home, with large windows flooding the space with natural light.

**Contemporary Design:** The open-plan layout connects the living, dining, and kitchen areas, with sleek finishes.

**Comfortable Bedrooms:** The property includes spacious bedrooms, with the master bedroom featuring an en-suite bathroom.

**Convenient Location:** Close proximity to Canary Wharf offers easy access to a variety of amenities, including shops, restaurants, and transport links.

**On-Site Facilities:** Residents benefit from access to a day concierge and communal gardens within the development.

**Community Atmosphere:** The Isle of Dogs offers a vibrant community vibe, with plenty of green spaces and waterfront areas to explore.

## Situation

### Local Area:

**Canary Wharf:** A bustling hub of activity, Canary Wharf is known for its business district and array of dining and entertainment options.

**Green Spaces:** Nearby parks like Mudchute Park and Farm provide opportunities for outdoor relaxation.

**Cultural Attractions:** Explore the area's maritime history at the Museum of London Docklands or catch a show at the O2 Arena.

**Transport Links:** With excellent transport links via the Jubilee Line, DLR, and Thames Clipper, getting around London is convenient and efficient.

Experience modern urban living at its finest in this well-appointed flat at Streamlight Tower.

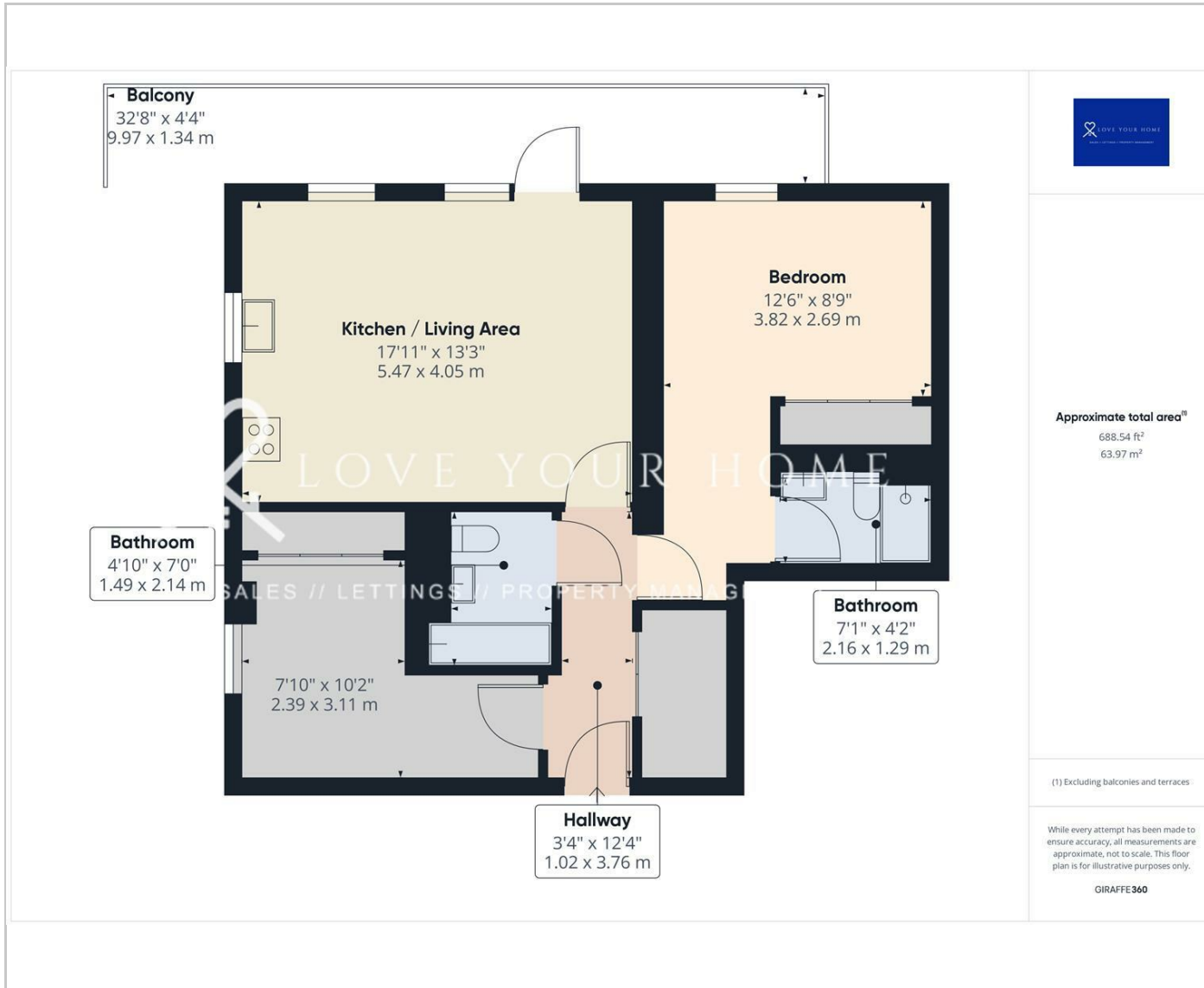
null

**Council Tax Band:** E

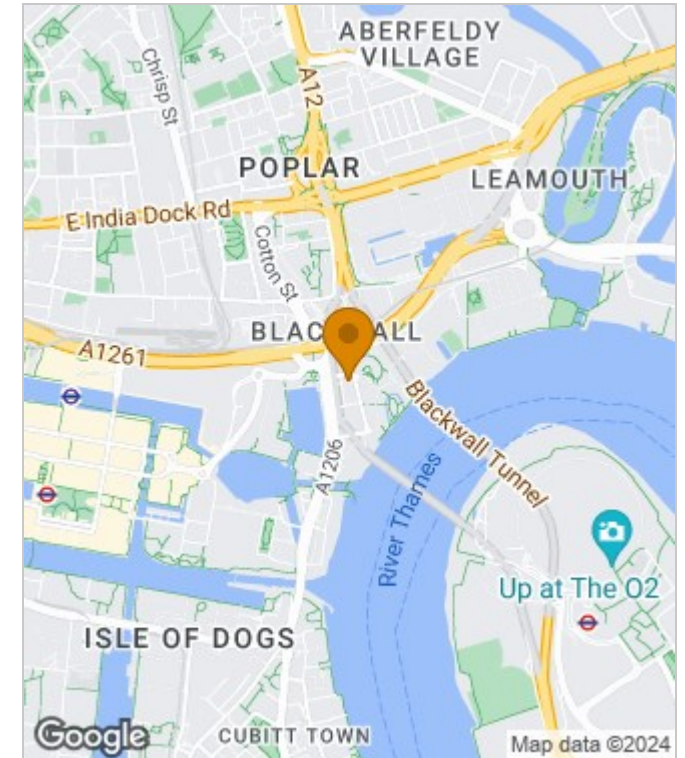
**Available:**



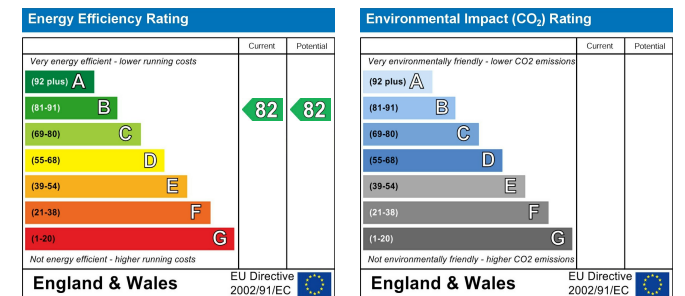
## Floor Plans



## Area Map



## Energy Performance Graph



These particulars, whilst believed to be accurate are set out as a general outline only for guidance and do not constitute any part of an offer or contract. Intending purchasers should not rely on them as statements of representation of fact, but must satisfy themselves by inspection or otherwise as to their accuracy. No person in this firm's employment has the authority to make or give any representation or warranty in respect of the property.

The Nucleus Brunel Way, Dartford, Kent, DA1 5GA

Tel: 02081758868 Email: [property@loveyourhomeonline.com](mailto:property@loveyourhomeonline.com) <http://www.loveyourhomeonline.com>