

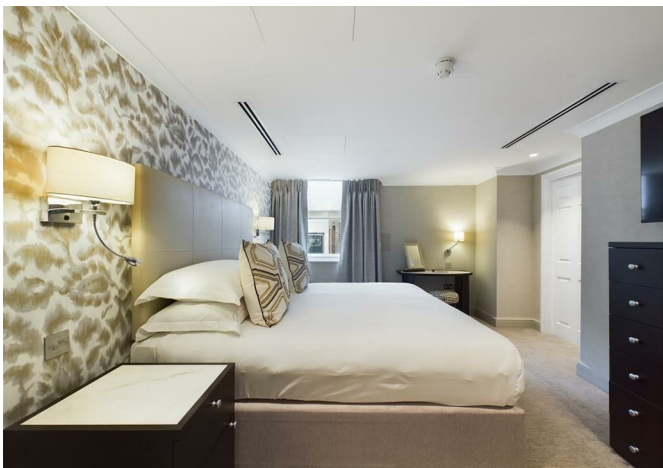


LOVE YOUR HOME

SALES // LETTINGS // PROPERTY MANAGEMENT



c16, Calico House Bow Lane, London, EC4M 9DT
£6,067 Per month



c16, Calico House Bow Lane, London, EC4M 9DT

£6,067 Per month

Luxury 1 bed apartment with all bills included, walking distance to London's financial district.

Located in the heart of the City, this Deluxe one-bedroom apartment at Cheval Calico House is only a short walk away from landmarks such as the Bank of England, Tate Modern and Barbican Centre, a world-class arts and cinema complex.

Enjoy lively views of Bow Lane and Watling Street from large picture windows in the reception area. The apartment provides a unique city backdrop and allow you to fully experience London life, like a local.

The flat comprises of spacious lounge/reception area complete with comfortable sofas and flat-screen TV with top of the range furniture, master bedroom with generously sized with wall-to-wall wardrobe and ensuite bathroom with separate overhead shower.

The living area includes a galley-style kitchen with ample workspace, washer/dryer, fridge-freezer, a Nespresso coffee machine and modern appliances throughout.

The development is Pet Friendly and benefits from a concierge service and weekly cleaning, including change of towels and linen.

Description

Luxury 1 bed apartment with all bills included, walking distance to London's financial district.

Located in the heart of the City, this Deluxe one-bedroom apartment at Cheval Calico House is only a short walk away from landmarks such as the Bank of England, Tate Modern and Barbican Centre, a world-class arts and cinema complex.

Enjoy lively views of Bow Lane and Watling Street from large picture windows in the reception area. The apartment provides a unique city backdrop and allow you to fully experience London life, like a local.

Situation

The flat comprises of spacious lounge/reception area complete with comfortable sofas and flat-screen TV with top of the range furniture, master bedroom with generously sized with wall-to-wall wardrobe and en-suite bathroom with separate overhead shower.

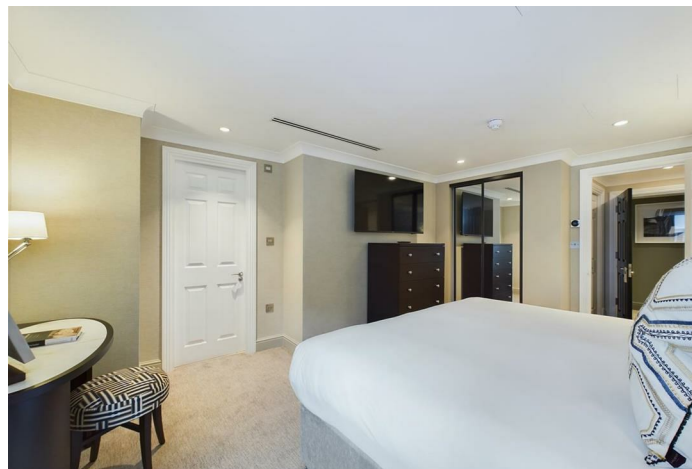
The living area includes a galley-style kitchen with ample workspace, washer/dryer, fridge-freezer, a Nespresso coffee machine and modern appliances throughout.

The development is Pet Friendly and benefits from a concierge service and weekly cleaning, including change of towels and linen.

Furnished

Council Tax Band: New Build

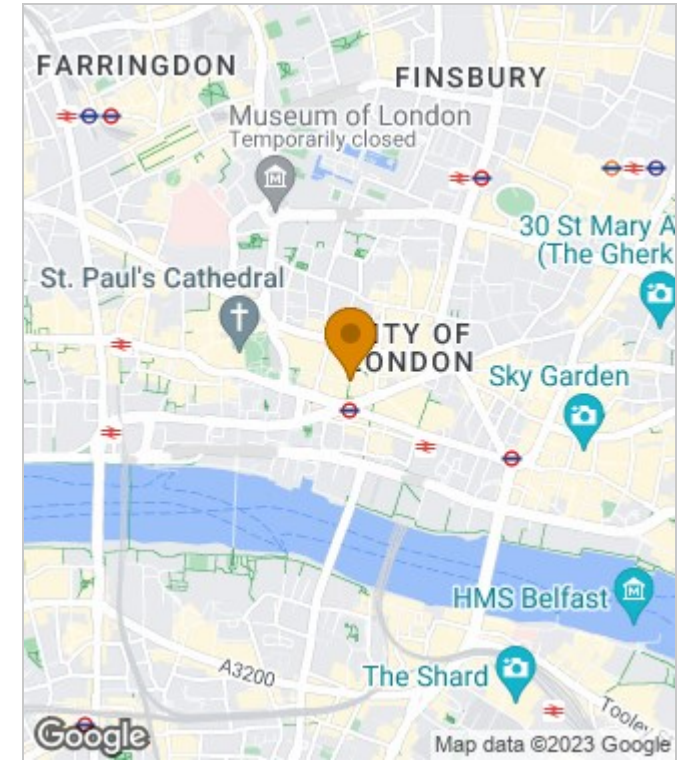
Available: 4th November 2023



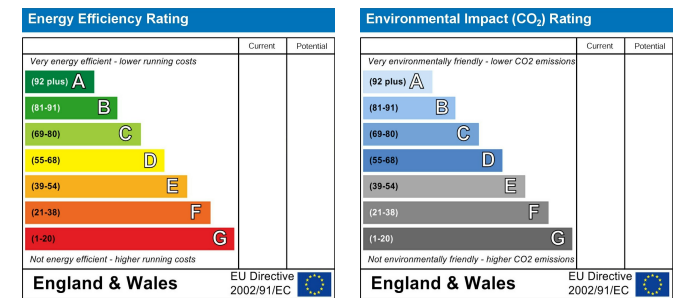
Floor Plans



Area Map



Energy Performance Graph



These particulars, whilst believed to be accurate are set out as a general outline only for guidance and do not constitute any part of an offer or contract. Intending purchasers should not rely on them as statements of representation of fact, but must satisfy themselves by inspection or otherwise as to their accuracy. No person in this firm's employment has the authority to make or give any representation or warranty in respect of the property.