



LOVE YOUR HOME

SALES // LETTINGS // PROPERTY MANAGEMENT



3307 Walworth Road, London, SE1 6EJ

£700,000



3307 Walworth Road, London, SE1 6EJ

£700,000

A Vibrant Urban Oasis with Unmatched Convenience

Unlock the door to your new life at Strata Tower, a modern haven perfectly situated in the heart of SE1, London. This remarkable apartment is more than just a place to reside; it's an entry into a lifestyle that seamlessly blends luxury living with the rich tapestry of the neighborhood.

Urban Living with a View:

Discover the awe-inspiring vistas from the 33rd floor of this magnificent tower. Gaze upon the iconic London skyline, with landmarks such as The Shard and Tower Bridge painting an ever-changing masterpiece against the cityscape. This captivating view is the backdrop to your daily life, whether you're enjoying breakfast or toasting to another day well-lived.

Sleek Modernity:

Step into a sleek, modern living space flooded with natural light. The open-concept design creates an inviting atmosphere, and the kitchen is a culinary enthusiast's dream, equipped with top-tier appliances. This apartment is your canvas, ready to be tailored to your unique style.

Description

A Vibrant Urban Oasis with Unmatched Convenience

Unlock the door to your new life at Strata Tower, a modern haven perfectly situated in the heart of SE1, London. This remarkable apartment is more than just a place to reside; it's an entry into a lifestyle that seamlessly blends luxury living with the rich tapestry of the neighborhood.

Urban Living with a View:

Discover the awe-inspiring vistas from the 33rd floor of this magnificent tower. Gaze upon the iconic London skyline, with landmarks such as The Shard and Tower Bridge painting an ever-changing masterpiece against the cityscape. This captivating view is the backdrop to your daily life, whether you're enjoying breakfast or toasting to another day well-lived.

Sleek Modernity:

Step into a sleek, modern living space flooded with natural light. The open-concept design creates an inviting atmosphere, and the kitchen is a culinary enthusiast's dream, equipped with top-tier appliances. This apartment is your canvas, ready to be tailored to your unique style.

A Cultural Hub:

SE1 is a neighborhood steeped in culture and history. You'll find yourself amidst a vibrant tapestry of trendy restaurants, cultural gems, and open spaces. Explore the flavors of the world in the local eateries, take a leisurely stroll through local parks, or immerse yourself in the arts at the Imperial War Museum.

Situation

Ultimate Convenience:

One of the greatest assets of Strata Tower is its unmatched location. Elephant and Castle station is right across the street, offering swift access to the Tube, National Rail, and major bus routes. Additionally, the new shopping center slated to open in 2026 will provide even more shopping and dining options at your doorstep.

Your New Urban Adventure:

This apartment isn't just about luxurious living; it's about embracing the vibrancy of city life. Your address at Strata Tower opens doors to a world of possibilities, and every day brings a new adventure. Immerse yourself in the culture, savor the cuisine, and relish in the convenience.

Conclusion:

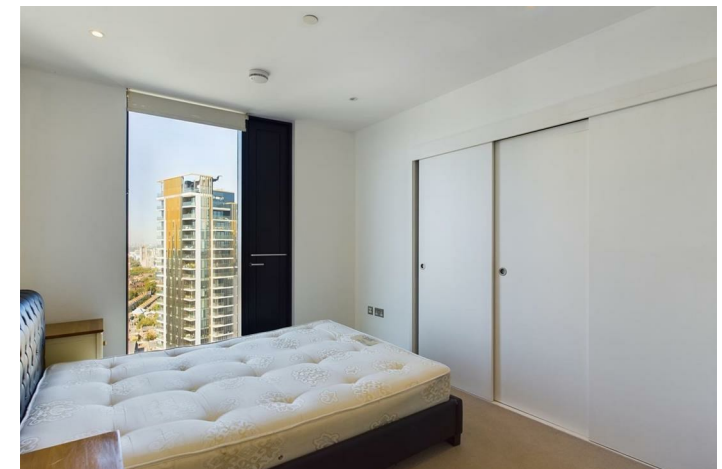
Strata Tower is your gateway to a dynamic urban lifestyle. Whether you're captivated by the breathtaking views, the contemporary design, or the unparalleled neighborhood amenities, this apartment represents an exceptional opportunity. Don't miss the chance to make this unique residence your own.

Contact us today to schedule a viewing and seize the opportunity to live at the intersection of luxury and culture in SE1.

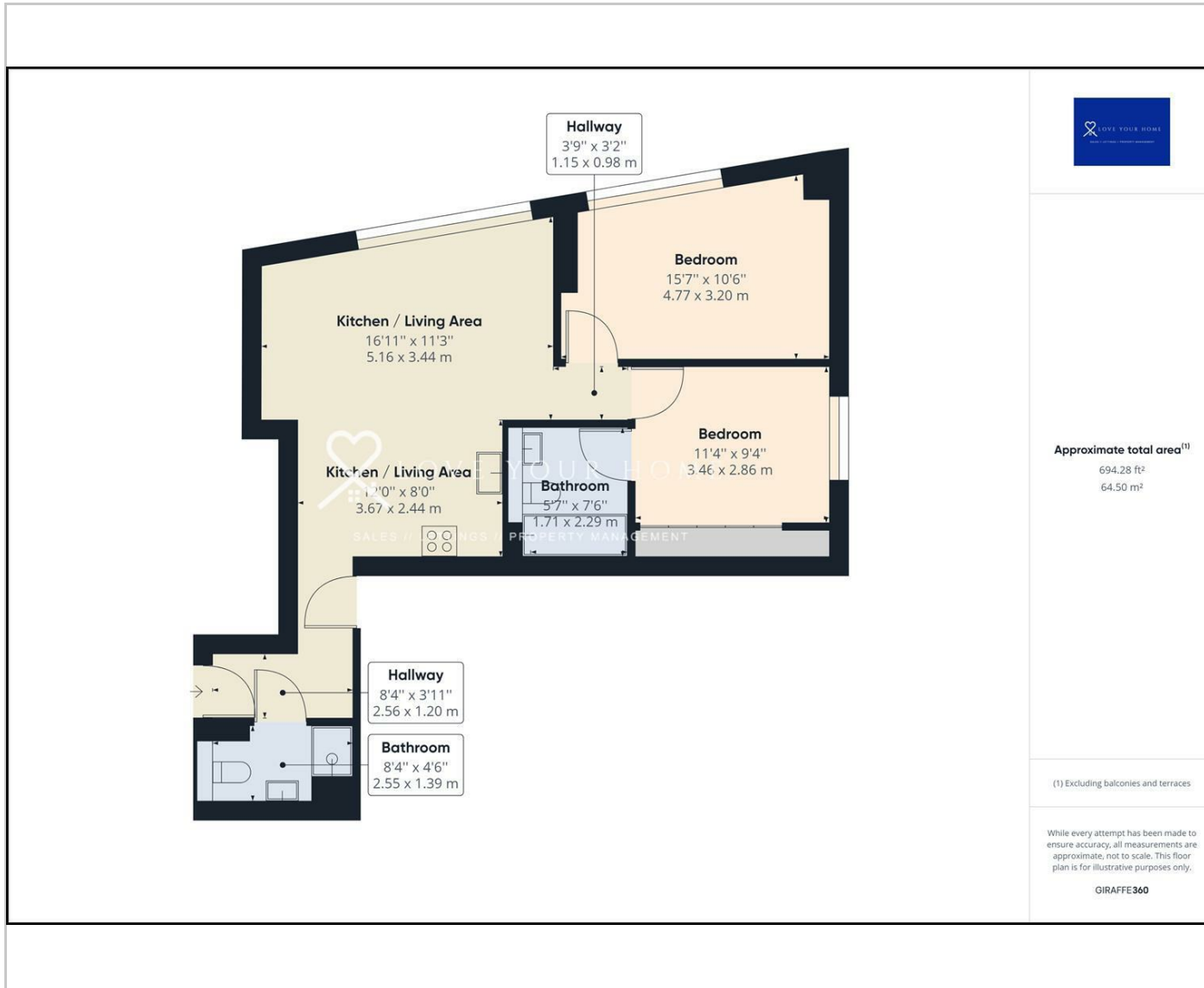
null

Council Tax Band:

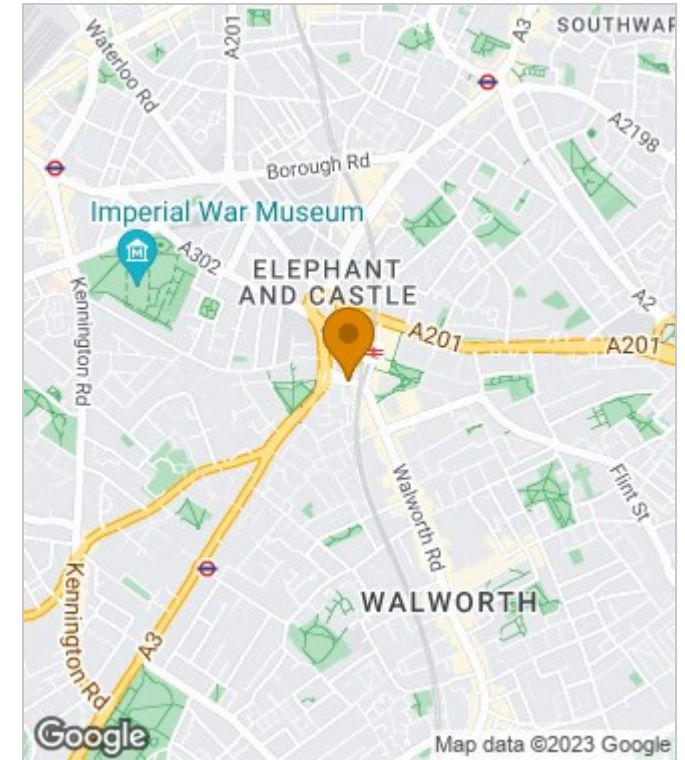
Available:



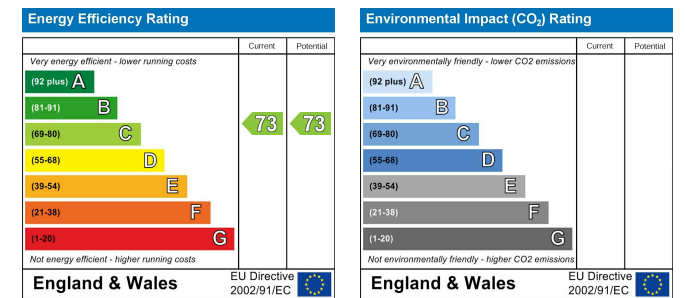
Floor Plans



Area Map



Energy Performance Graph



These particulars, whilst believed to be accurate are set out as a general outline only for guidance and do not constitute any part of an offer or contract. Intending purchasers should not rely on them as statements of representation of fact, but must satisfy themselves by inspection or otherwise as to their accuracy. No person in this firm's employment has the authority to make or give any representation or warranty in respect of the property.

The Nucleus Brunel Way, Dartford, Kent, DA1 5GA

Tel: 02081758868 Email: property@loveyourhomeonline.com <http://www.loveyourhomeonline.com>