



LOVE YOUR HOME

SALES // LETTINGS // PROPERTY MANAGEMENT



3005 The Strata, 8 Walworth Road, London, SE1 6EJ  
**£670,000**



## 3005 The Strata, 8 Walworth Road, London, SE1 6EJ

**£670,000**

Spectacular 30th Floor 2-Bedroom Apartment in Iconic Strata Tower

Step into urban elegance with this stunning 30th-floor 2-bedroom, 2-bathroom apartment, nestled within the renowned Strata Tower, also known as the "Razor." This exclusive residence offers an unparalleled lifestyle in the vibrant heart of London's Elephant and Castle district.

### Key Features:

**Iconic Location:** Embrace the allure of the Razor, an architectural landmark, and enjoy breathtaking panoramic views of London's skyline from the 30th floor.

**Contemporary Design:** Thoughtfully curated, the apartment boasts modern finishes and an open-plan layout, exuding sophistication at every turn.

**Prime Urban Living:** Immerse yourself in the vibrant Elephant and Castle neighborhood, home to a variety of dining, entertainment, and cultural options.

**Tranquil Bedrooms:** Two spacious bedrooms provide a serene retreat with ample natural light, ensuring relaxation and restful nights.

**Dedicated Concierge:** Experience the luxury of a dedicated concierge service, catering to your every need for seamless city living.

**Green Initiatives:** The Strata Tower embraces sustainability with eco-friendly features, contributing to a greener future.



## Description

Experience Urban Elegance at the Razor - Spectacular 30th Floor 2-Bedroom Apartment

Nestled within the renowned Strata Tower, affectionately dubbed "The Razor," this stunning 30th-floor apartment presents an unparalleled opportunity to embrace the epitome of urban elegance. Situated in the heart of London's vibrant Elephant and Castle district, this residence offers a lifestyle of sophistication and exclusivity that is truly second to none.

Key Features:

- 1. Iconic Location:** Prepare to be captivated by the allure of the Razor, a landmark on London's skyline known for its striking design and unique architectural form. A soaring 30 floors above the city, this apartment provides breathtaking panoramic views that showcase London's most beloved landmarks.
- 2. Modern Design:** Step into a realm of contemporary living, where every detail has been meticulously curated to evoke a sense of refined luxury. The thoughtfully designed layout flows seamlessly from the elegant living area to the gourmet kitchen, creating an inviting space perfect for hosting gatherings or enjoying quiet evenings in.
- 3. Stunning Views:** As the city stretches beneath you, indulge in the ever-changing tapestry of London's skyline from the private balcony. The 30th-floor vantage point offers an unparalleled perspective, allowing you to witness the city come alive both day and night.

## Situation

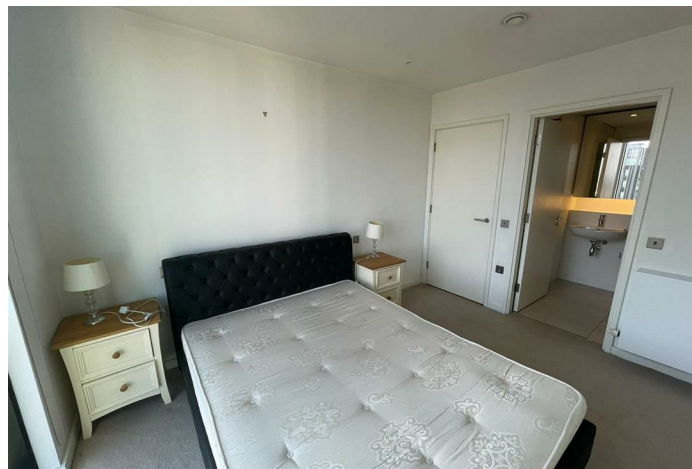
- 4. Tranquil Bedrooms:** Escape to your private haven in the two spacious bedrooms, each offering serene views and abundant natural light. The primary suite features an en-suite bathroom, offering the ultimate in comfort and convenience.
- 5. Premium Concierge Service:** Enjoy the luxury of a dedicated concierge service, ensuring that every aspect of your urban lifestyle is taken care of with ease and efficiency. From organizing reservations to receiving packages, the concierge is here to cater to your needs.
- 6. Prime Location:** Beyond the building's captivating features, this apartment enjoys a strategic location that puts you at the heart of the action. From acclaimed dining and entertainment to excellent transport links, everything London has to offer is within easy reach.
- 7. Sustainable Living:** While the wind turbines that were once part of the Strata Tower's eco-friendly design are no longer in use, you can still embrace sustainable living with other green initiatives and energy-efficient features in the building.
- 8. Investment Opportunity:** With its prime location, iconic status, and timeless appeal, this 30th-floor apartment offers an attractive investment opportunity with strong rental potential and promising capital appreciation.

Don't miss the chance to own a slice of London's architectural wonder. Immerse yourself in

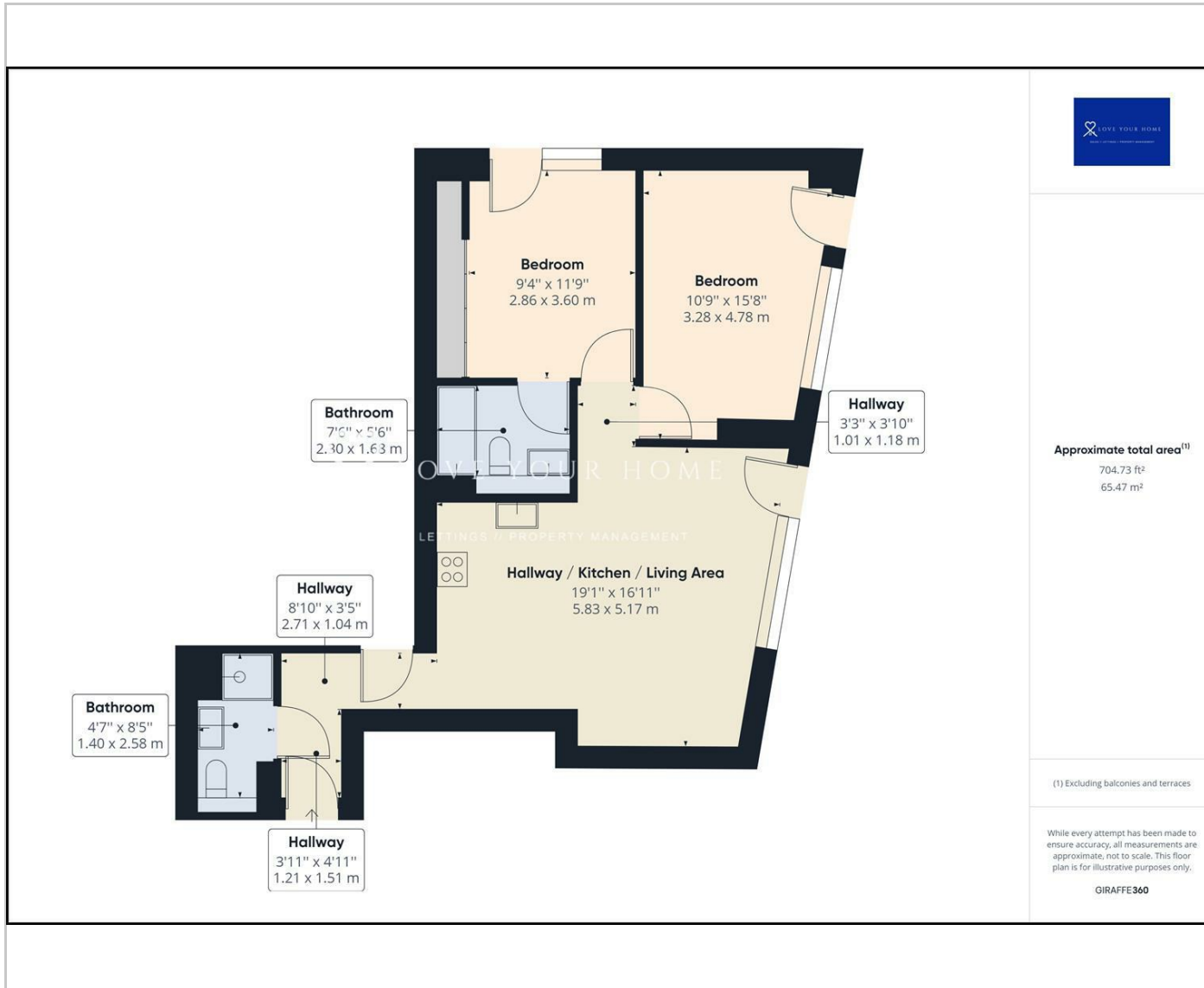
null

Council Tax Band:

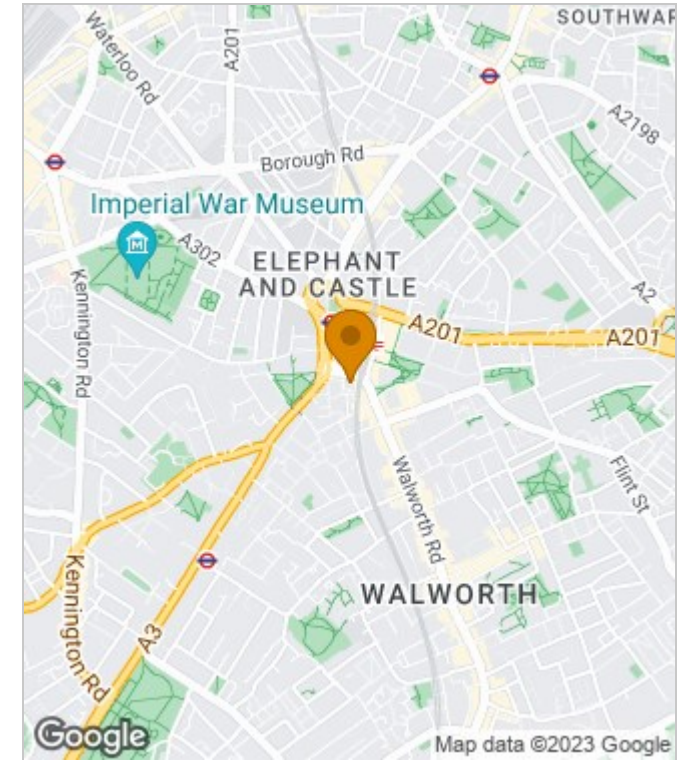
Available:



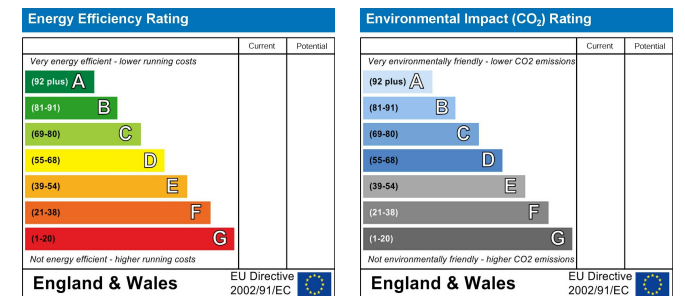
## Floor Plans



## Area Map



## Energy Performance Graph



These particulars, whilst believed to be accurate are set out as a general outline only for guidance and do not constitute any part of an offer or contract. Intending purchasers should not rely on them as statements of representation of fact, but must satisfy themselves by inspection or otherwise as to their accuracy. No person in this firm's employment has the authority to make or give any representation or warranty in respect of the property.

The Nucleus Brunel Way, Dartford, Kent, DA1 5GA

Tel: 02081758868 Email: [property@loveyourhomeonline.com](mailto:property@loveyourhomeonline.com) <http://www.loveyourhomeonline.com>