



LOVE YOUR HOME

SALES // LETTINGS // PROPERTY MANAGEMENT



Three Quays Lower Thames Street, London, EC3R 6AG
£8,000 Per month



Three Quays Lower Thames Street, London, EC3R 6AG

£8,000 Per month

Stunning riverside development next to the Tower of London, this luxury 2 bed includes Gym facilities, concierge, weekly cleaning including change of towels and linen and ALL BILLS INCLUDED.

Apartments available for rental from 3 - 12 months.

The apartment's floor-to-ceiling windows offer views of Tower Bridge, The Shard, HMS Belfast and the River Thames. Continue to enjoy these stunning sights from your own private balcony, which can be accessed through the open-plan living room.

In the living room, you'll find plenty of space to unwind and socialise; the fully-fitted kitchen is equipped with everyday modern appliances and there is a separate dining area to enjoy homemade breakfasts and dinners.

The master bedroom hosts a luxurious king-sized bed and plenty of storage space for your clothes and other belongings. This bedroom's modern en-suite makes room for a generously sized walk-in rain shower as well as luxury essentials to help make you feel right at home.

The second bedroom can be set up according to your preference, with either twin beds or a comfortable double bed. You'll find the family bathroom situated off the main hallway, which includes a large bathtub and separate shower overhead.

Description

Stunning riverside development next to the Tower of London, this luxury 2 bed includes Gym facilities, concierge, weekly cleaning including change of towels and linen and ALL BILLS INCLUDED.

Apartments available for rental from 3 - 12 months.

Situation

The apartment's floor-to-ceiling windows offer views of Tower Bridge, The Shard, HMS Belfast and the River Thames. Continue to enjoy these stunning sights from your own private balcony, which can be accessed through the open-plan living room.

In the living room, you'll find plenty of space to unwind and socialise; the fully-fitted kitchen is equipped with everyday modern appliances and there is a separate dining area to enjoy homemade breakfasts and dinners.

The master bedroom hosts a luxurious king-sized bed and plenty of storage space for your clothes and other belongings. This bedroom's modern en-suite makes room for a generously sized walk-in rain shower as well as luxury essentials to help make you feel right at home.

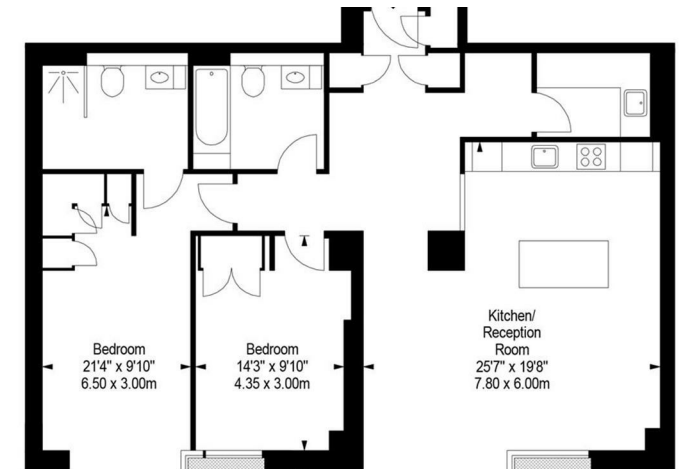
The second bedroom can be set up according to your preference, with either twin beds or a comfortable double bed. You'll find the family bathroom situated off the main hallway, which includes a large bathtub and separate shower overhead.

The closest underground stations can be found at nearby Tower Hill (Circle and District Line) Tower Gateway (DLR) and Monument (Northern, Circle & District line) as well as the River Bus service at Tower Pier.

Furnished

Council Tax Band:

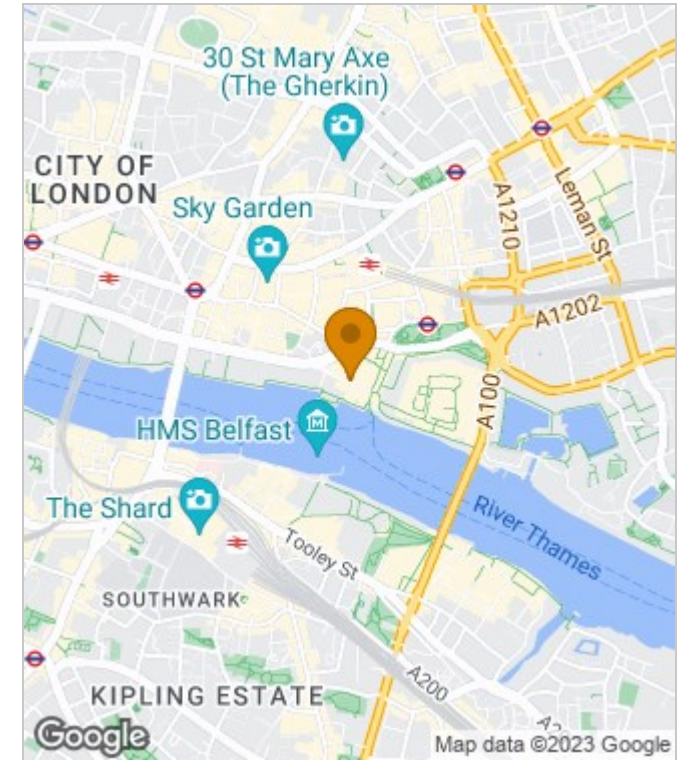
Available: 31st May 2023



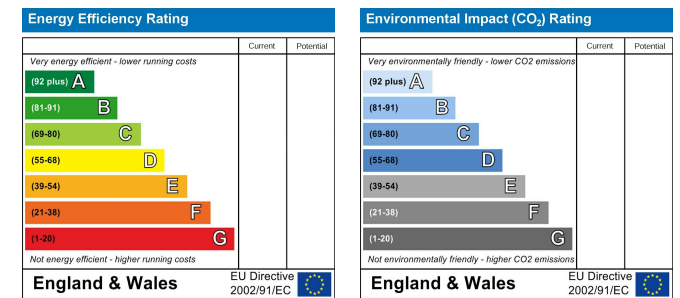
Floor Plans



Area Map



Energy Performance Graph



These particulars, whilst believed to be accurate are set out as a general outline only for guidance and do not constitute any part of an offer or contract. Intending purchasers should not rely on them as statements of representation of fact, but must satisfy themselves by inspection or otherwise as to their accuracy. No person in this firm's employment has the authority to make or give any representation or warranty in respect of the property.