

# GLENVALE PARK



WELLINGBOROUGH

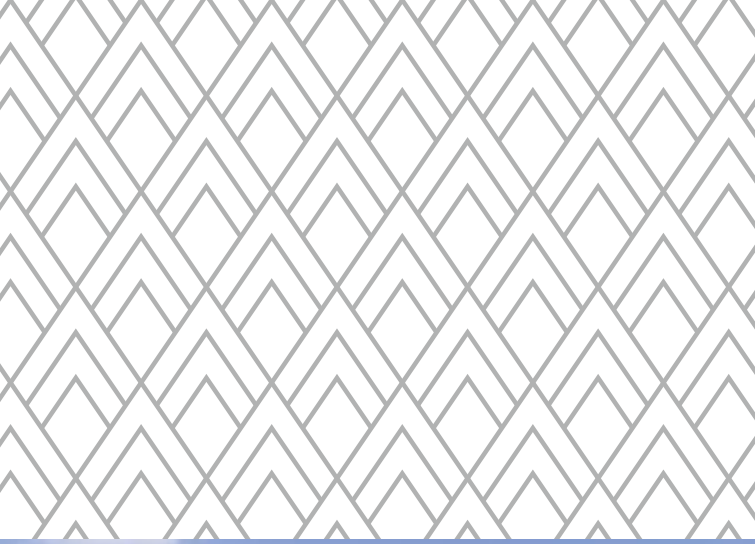
FIND YOUR  
PERFECT  
PLACE TO  
CALL HOME

[keepmoat.com](http://keepmoat.com)





NIORT WAY, WELLINGBOROUGH, NN8 5ZA



GLENVALE PARK

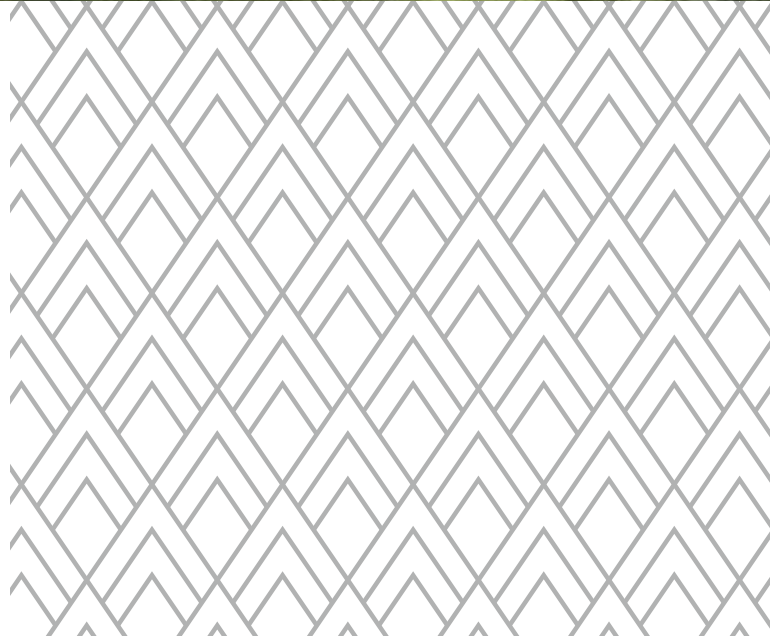


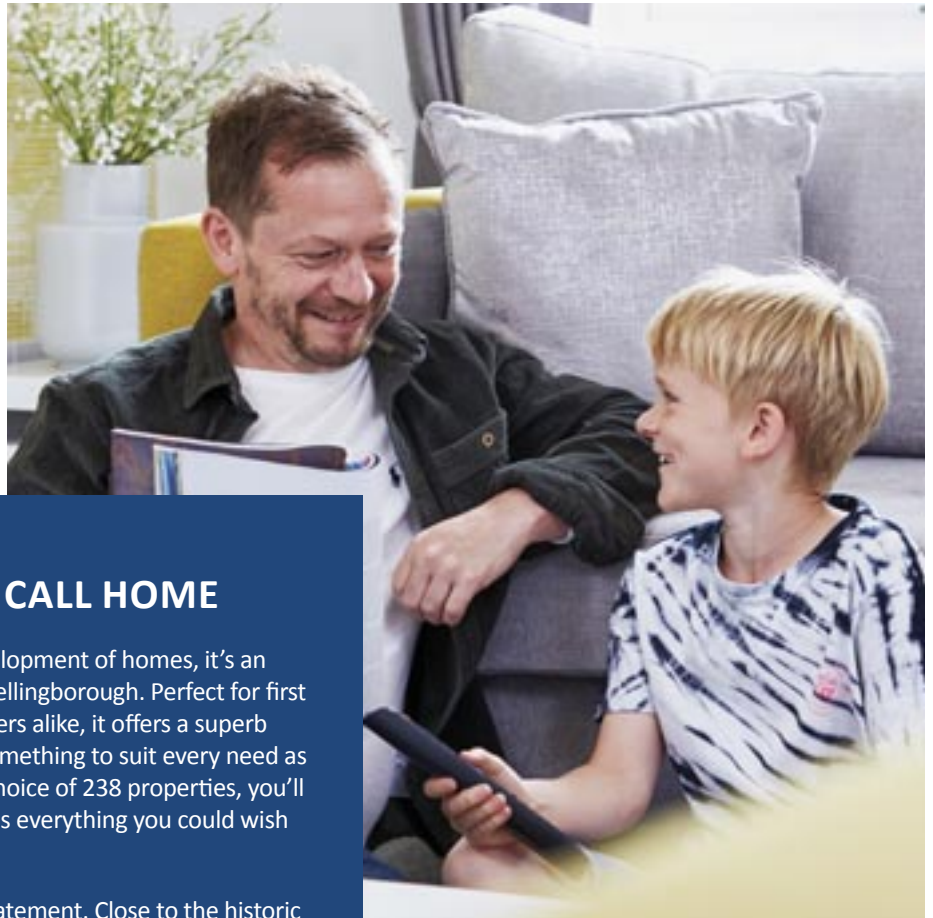


# ► WELCOME TO GLENVALE PARK



- **WELCOME**
- LOCATION
- TRAVEL LINKS
- SITE PLAN
- MAKE IT YOUR OWN
- SPECIFICATION
- YOUR BUYING GUIDE
- 30,000 HOMES & COUNTING





## A NEW COMMUNITY TO CALL HOME

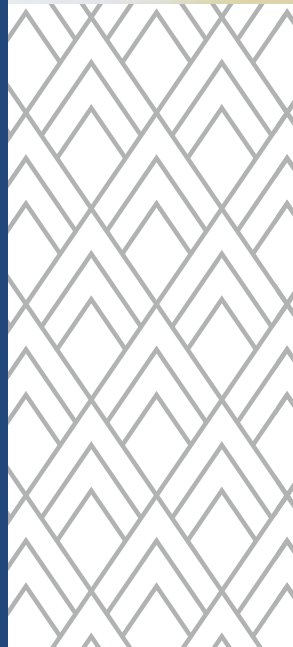
Glenvale Park is more than just a new development of homes, it's an exciting new community on the edge of Wellingborough. Perfect for first time buyers, growing families and downsizers alike, it offers a superb range of 2, 3 & 4 bed family homes with something to suit every need as well as every budget. Thanks to a superb choice of 238 properties, you'll find your dream home in a location that has everything you could wish for and more.

To say Glenvale Park has it all is an understatement. Close to the historic market town of Wellingborough, it has been carefully designed to be a place to enjoy life to the full. Because as well as being ideally located for all the town centre has to offer, it includes a new local centre to shop, eat and drink, two primary schools, a nursery, a community centre, public square, family play park and over 200 acres of parkland.

Add to this the fact that it also has easy access to the A509, A45 and M1 with superb travel links that place London St Pancras less than an hour away and it's easy to see that the opportunity to call Glenvale Park home is too good to miss.

*Plus, with great offers moving could be more affordable than you think. Home to sell? Ask us about Easymove.*

**Easymove**



## ► LIFE IN WELLINGBOROUGH



WELCOME

► **LOCATION**

TRAVEL LINKS

SITE PLAN

MAKE IT YOUR OWN

SPECIFICATION

YOUR BUYING GUIDE

30,000 HOMES & COUNTING

## EVERYTHING ON YOUR DOORSTEP

Step out of the door at Glenvale Park and you can do whatever your heart wishes. The nearby market town of Wellingborough has a great range of shops as well as cafes, restaurants, bars and range of attractions, including the Castle Theatre. If you prefer everything under one roof then head for Rushden Lakes Shopping Centre down the road with its impressive retail and leisure facilities. Or for a truly unique experience, try Beckworth Emporium a short drive away which is a one-of-a-kind garden centre with a food hall specialising in local produce and a conservatory dining room.

Families will be pleased to know that there are outstanding local primary and secondary schools in the area.

In addition there are great local facilities such as a community hub, local shops and places to meet for a drink and bite to eat in Glenvale Park itself.

You'll be equally as spoilt for choice when it comes to sport and leisure. The development itself includes family play areas and 200 acres of parkland. Then there are local gyms and sports centres as well as a choice of golf courses in the area. To make the most of the great outdoors, head for Irchester Country Park with its walks, play areas and Jungle Parc high ropes, or Stanwick Lakes which offers range of activities. Or simply explore some of the nearby villages for a more relaxing time.

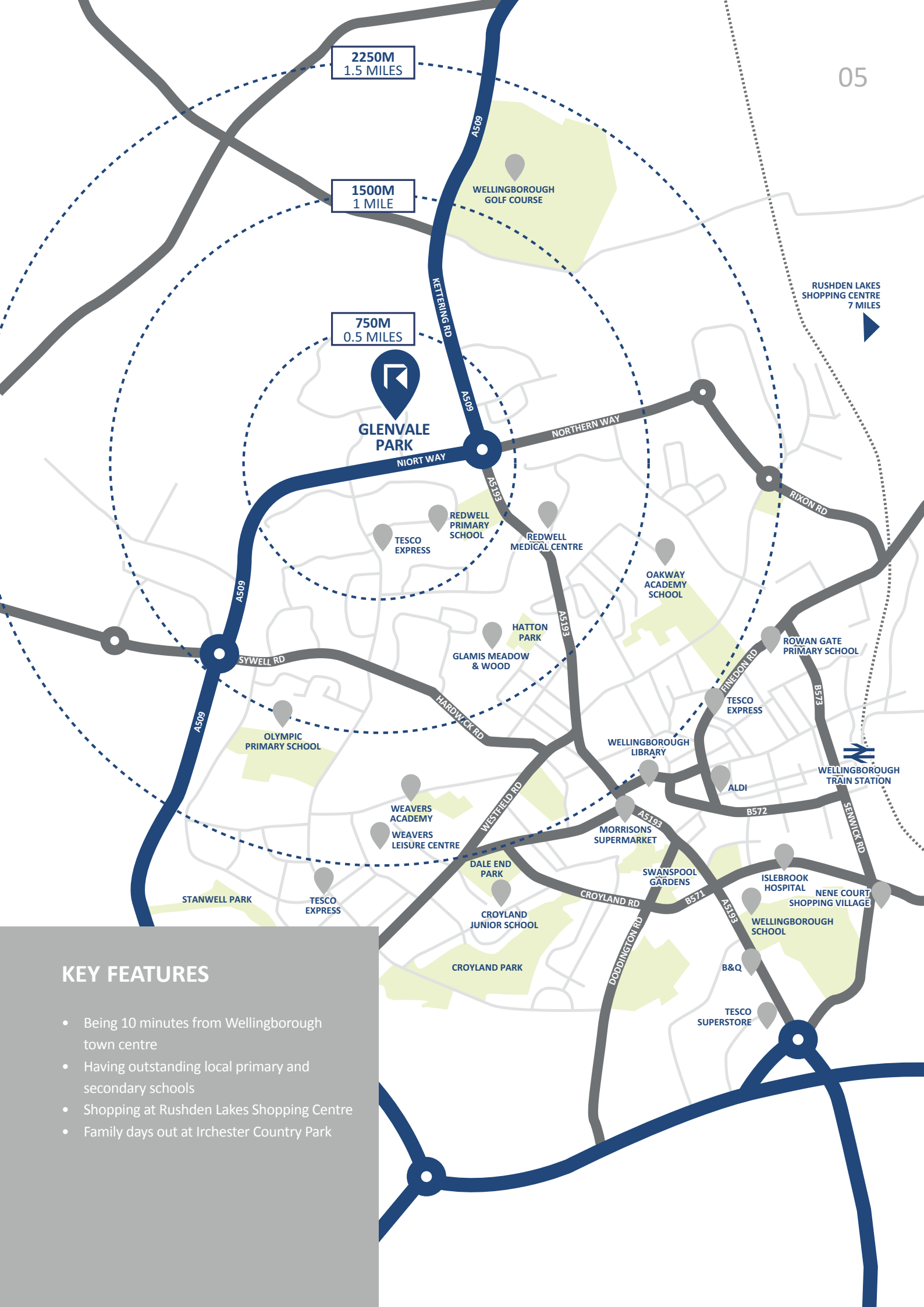
If you do want more excitement, then try Wicksteed Park Theme Park with its rides for all ages or Santa Pod Raceway which is the home of European FIA Drag Racing.

One thing's for sure. When you live at Glenvale Park, no two days need ever be the same.



Irchester Country Park ▲





## KEY FEATURES

- Being 10 minutes from Wellbeing town centre
- Having outstanding local primary and secondary schools
- Shopping at Rushden Lakes Shopping Centre
- Family days out at Irchester Country Park

## ▶ TRAVEL LINKS

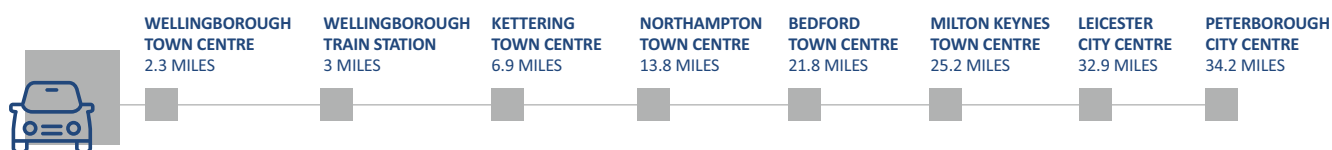
### THE COMMUTING HOTSPOT

Glenvale Park is ideally situated with easy access to the A509, A45 and M1. Thanks to its central location, you can hop in the car and before you know it, be in local towns such as Market Harborough, Bedford and Milton Keynes.

With Wellingborough Train Station a short 10-minute drive away, you can even be in London St. Pancras in under an hour. Making it the ideal hub for commuting near or far.

There are also a series of bus stops planned which will run regular handy services in and out of town. Perfect for those who prefer to let someone else do the driving.

For holidays or business trips abroad, Birmingham Airport is just an hour away. With flights across the globe, you can see the world with ease. Though no matter where you head, you'll soon be missing home!



\*All times are taken from Google Maps and National Rail. All times are approximate and subject to change.

WELCOME

LOCATION

▶ TRAVEL LINKS

SITE PLAN

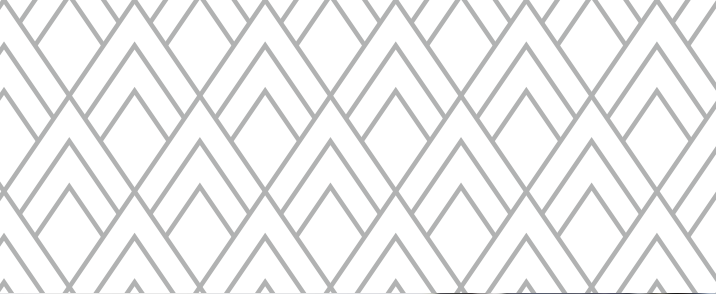
MAKE IT YOUR OWN

SPECIFICATION


YOUR BUYING GUIDE

30,000 HOMES & COUNTING





## ► SITE PLAN

-  **The Ormesby**  
2 bedroom home
-  **The Adlington**  
2 bedroom home
-  **The Pixton**  
2 bedroom home
-  **The Shipley**  
3 bedroom home
-  **The Dovenby**  
3 bedroom home
-  **The Whitley**  
3 bedroom home
-  **The Embleton**  
3 bedroom home
-  **The Foxhill**  
3 bedroom home
-  **The Drayton**  
3 bedroom home
-  **The Westbrook**  
3 bedroom home
-  **The Tiverton**  
3 bedroom home
-  **The Lambeth**  
4 bedroom home
-  **The Oakwood**  
4 bedroom home
-  **The Clumber**  
4 bedroom home
-  **The Somerhill**  
4 bedroom home
-  **The Neston**  
4 bedroom home
-  **Affordable Homes**
-  **Electric Vehicle  
Charging Point**



WELCOME  
LOCATION  
TRAVEL LINKS

### ► SITE PLAN

MAKE IT YOUR OWN  
SPECIFICATION  
YOUR BUYING GUIDE  
30,000 HOMES & COUNTING

Please Note: This site plan is only a guide to the above development. It does not bind or imply that the layout will be as indicated. Please see our Home Sales Executive for full specification and plot details at this development.





## ► MAKE IT YOUR OWN



WELCOME  
LOCATION  
TRAVEL LINKS  
SITE PLAN  
► **MAKE IT YOUR OWN**  
SPECIFICATION  
YOUR BUYING GUIDE  
30,000 HOMES & COUNTING



## WE NEVER FORGET IT'S YOUR HOME

Inside every Keepmoat home you'll find high standards of finish throughout, smart modern designs and living spaces that are designed with families in mind. Benefitting from a range of optional extras you can move into a new home that truly feels like your own.

When you buy a Keepmoat Home, you can rest assured that it's covered with not one, but two warranties. Our two year Keepmoat Homes Customer Care Warranty, as well as the NHBC 10 Year Building Warranty.

*Practical and stylish homes that are perfectly suited to the demands of modern living.*

Availability of upgrades and standard choices are subject to build stage at point of reservation.

## ► SPECIFICATION

### FINISHING TOUCHES

Our standard specification includes high quality, modern fixtures and fittings with a great choice of kitchen worktops and units.

Once you've reserved your home, we'll invite you back for your options meeting. This is the exciting bit. It's here you can discuss all the ways you can personalise your home.

*Be inspired and make your home yours.*

WELCOME  
LOCATION  
TRAVEL LINKS  
SITE PLAN  
MAKE IT YOUR OWN

## ► SPECIFICATION

YOUR BUYING GUIDE  
30,000 HOMES & COUNTING





## KITCHEN / UTILITY

- ✓ Choice of kitchen units\*\*
- ✓ Choice of work top with upstand\*\*
- ✓ Fan-assisted stainless electric oven with stainless steel chimney extractor hood
- ✓ Fan-assisted, stainless steel electric double oven with stainless steel chimney extractor hood to 4-Bedroom Detached homes
- ✓ Gas hob (600mm four burner standard, 900mm five burner hob to 4 Bedroom Detached homes) and stainless steel splash back
- ✓ Low profile contemporary sink
- ✓ Boiler housing

## BATHROOM / EN-SUITE

- ✓ Fitted white sanitaryware
- ✓ Choice of wall tiles\*\*
- ✓ Chrome hair rinser and twist handle overflow to bath
- ✓ Thermostatic shower in the en-suite\*
- ✓ Extractor fan to bathroom\*\*\*

## DECOR

- ✓ Dulux Supermatt Brilliant White emulsion painted walls and ceilings
- ✓ White gloss paint to interior wood work
- ✓ Polish chrome ironmongery to internal doors

## ELECTRICAL

- ✓ White sockets and switches
- ✓ TV aerial socket to lounge
- ✓ BT Openreach socket to lounge
- ✓ 2 zone programmable gas central heating system with thermostatic radiator valves
- ✓ Mains fed smoke detectors to hall and landing
- ✓ Electric vehicle charging points\*\*

## EXTERIORS

- ✓ Turfed and / or Landscaped front garden\*
- ✓ UPVC double glazed windows
- ✓ UPVC double glazed french doors\*\*
- ✓ External tap fitted to the rear of the home

*Make it your own with our range of optional extras*

## ► YOUR BUYING GUIDE



### STEP 01

#### Reservation

Once you've chosen the home for you, your sales executive will guide you through the reservation agreement. You'll need to pay a reservation fee - this could be as little as £250\* and makes up part of your deposit. It also means, subject to contracts and meeting the timescales in the agreement, the home is yours at the price agreed.

Now's a good time, if you haven't already, to ask us about how the Government-backed Help to Buy scheme \*\* can make buying your dream home more affordable. And if you've got a home to sell, our Easymove scheme could make moving easy as we'll arrange an estate agent and even pay their fees.



### STEP 02

#### The Mortgage and Legal Advisor

If you need a mortgage and haven't already arranged one, you'll need to do so quickly. We can give you the details of some reputable independent financial advisers and solicitors if you need a little help. All mortgage lenders will want to value your new home for themselves before they lend you the money – even on our homes which offer fantastic value for money.

When moving house you need a solicitor to carry out the legal work of buying your home – this is called conveyancing. Your solicitor will handle all contracts, provide legal advice and carry out local council searches, work with the Land Registry and transfer the funds to pay for your property.



### STEP 03

#### Exchange of Contracts

Four weeks after reservation (depending on the build stage of your new home) and if all the mortgage and legal documents are in place, we'll exchange contracts†.

At this point you'll need to pay the balance of the deposit and the whole transaction becomes legally binding. Please remember that if your deposit is in an account that you need to give notice of withdrawal, make sure you let the bank know well in advance to avoid having to pay any penalties.

WELCOME  
LOCATION  
TRAVEL LINKS  
SITE PLAN  
MAKE IT YOUR OWN  
SPECIFICATION

#### ► YOUR BUYING GUIDE

30,000 HOMES & COUNTING

\*Reservation fee is regional and development specific and may vary, please check with your Sale Executive.

\*\*Help to buy is available on selected plots and subject to terms and conditions. † If the exchange does not take place on the agreed date we are within our rights to place the property back on the open market.



## STEP 04

### Build Completion

Usually around four weeks before your home is finished we'll get in touch to let you know of your legal completion date. This is normally within 7 – 14 days of construction ending. Your home will also undergo thorough quality inspections, both internally and externally, to ensure that it meets our quality standards. It will also be subject to several inspections by the National House-Building Council (NHBC).

Around this time we'll invite you to a home demonstration to familiarise yourself with your new home. During the demonstration we'll show you everything from how to work your heating system and appliances to the location of your fuse box.



## STEP 05

### Legal Completion

You're nearly there. Legal completion is when your lender releases the funds to pay for your home. This is all done through your solicitor.

Through your advisor, you will be notified of the specific completion date, which will take place within a 2 week period after the physical completion of the property. We'll then provide your solicitor with the title deeds of your home and register you as the home owner with the relevant utility companies.



## STEP 06

### Move in

Your dream Keepmoat home and a great new life awaits... once you've unpacked all the boxes.

Don't forget, we're always on hand to help you every step of the way even after you've moved in. Our regional customer care teams featuring highly trained staff can address any questions or issues that you may have with your new home.

## Leading the way in UK homebuilding

We are delighted to have achieved 5-star builder status in the national Home Builders Federation (HBF) awards. We have been independently recognised by our customers for delivering quality in build and excellent customer service.

The Home Builders Federation (HBF) awards 5 stars for customer satisfaction to homebuilders in England and Wales who receive a rating of at least 90% in its National New Homes Customer Satisfaction Survey. This annual survey allows our homeowners the opportunity to rate us on build quality, design, sales and customer care.

**We're proud to say that more than 9 out of 10 of our customers would recommend us to their friends.**







## 30,000 HOMES AND COUNTING

There is no substitute for experience, and we have that in abundance. We've already created 30,000 dream homes and counting.

While the number may be impressive, we know that there's only one home that's important - and that's yours.

That's why we treat every home we build like it's our first - lavishing it with care and attention to detail from start to finish.

*We never forget that it's your home.*

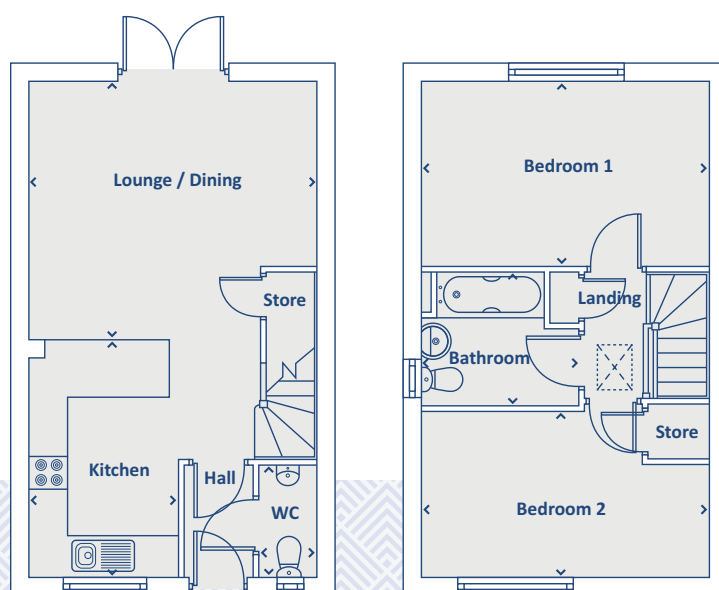
WELCOME  
LOCATION  
TRAVEL LINKS  
SITE PLAN  
MAKE IT YOUR OWN  
SPECIFICATION  
YOUR BUYING GUIDE

► **30,000 HOMES & COUNTING**



Artists impression, features may vary

## THE ORMESBY 2 bedroom home



### GROUND FLOOR

Kitchen	3710 x 2363	12'2" x 7'9"
Lounge / Dining	4063 x 4499	13'4" x 14'9"
WC	1760 x 900	5'9" x 2'11"

### FIRST FLOOR

Bedroom 1	2907 x 4499	9'6" x 14'9"
Bedroom 2	2600 x 4499	8'6" x 14'9"
Bathroom	2050 x 2465	6'9" x 8'1"

**Overall** 69.93 SQ M 753 SQ FT

➤ Longest measurement taken

#### PLEASE NOTE:

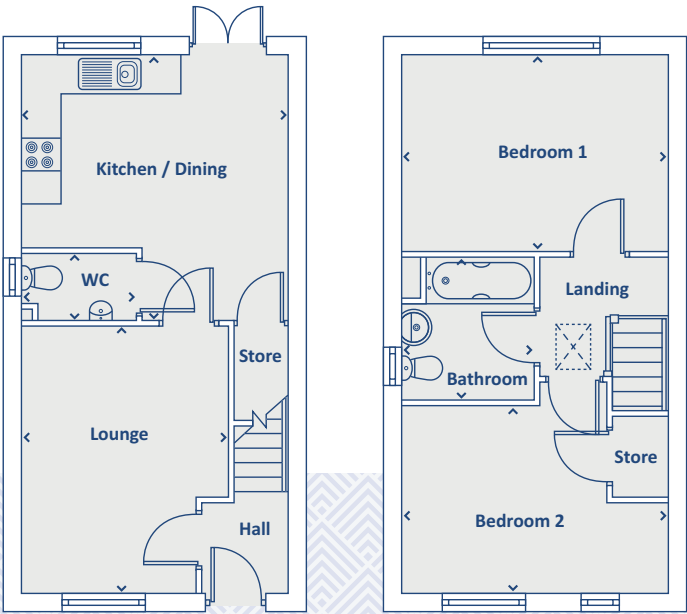
For illustration purposes only. All dimensions are + or - 50mm and these measurements should not be used for the purchase of carpets or furniture. Please see our Sales Executive for full specification and plot details at this development.

**CONSUMER  
CODE  
FOR  
HOME BUILDERS**  
[www.consumercode.co.uk](http://www.consumercode.co.uk)



Artists impression, features may vary

# THE ADLINGTON 2 bedroom home



## GROUND FLOOR

Kitchen / Dining	4139 x 4161	13'7" x 13'8"
Lounge	4216 x 3213	13'10" x 10'7"
WC	1010 x 1800	3'4" x 5'11"

➤ Longest measurement taken

**PLEASE NOTE:**  
For illustration purposes only. All dimensions are + or - 50mm and these measurements should not be used for the purchase of carpets or furniture. Please see our Sales Executive for full specification and plot details at this development.

## FIRST FLOOR

Bedroom 1	3100 x 4161	10'2" x 13'8"
Bedroom 2	2950 x 4161	9'8" x 13'8"
Bathroom	2168 x 2042	7'1" x 6'8"

**Overall 70.30 SQ M 757 SQ FT**

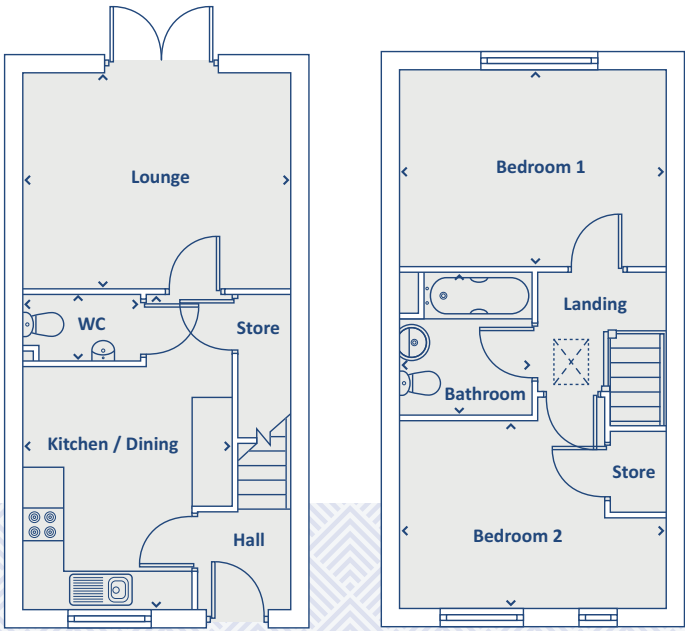
**CONSUMER  
CODE  
FOR  
HOME BUILDERS**  
[www.consumercode.co.uk](http://www.consumercode.co.uk)





Artists impression, features may vary

# THE PIXTON 2 bedroom home



## GROUND FLOOR

Kitchen / Dining	3816 x 3213	12'6" x 10'7"
Lounge	3400 x 4161	11'2" x 13'8"
WC	1010 x 1800	3'4" x 5'11"

## FIRST FLOOR

Bedroom 1	3100 x 4161	10'2" x 13'8"
Bedroom 2	2950 x 4161	9'8" x 13'8"
Bathroom	2168 x 2042	7'1" x 6'8"

Overall 70.30 SQ M 757 SQ FT

➤ Longest measurement taken

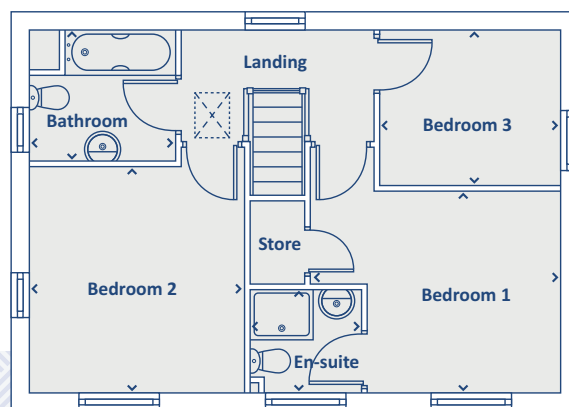
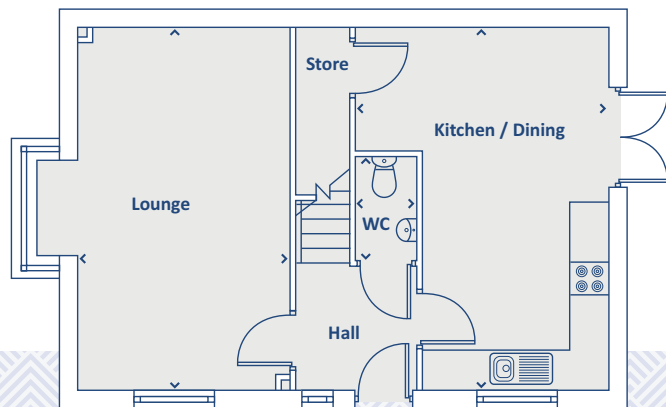
**PLEASE NOTE:**  
For illustration purposes only. All dimensions are + or - 50mm and these measurements should not be used for the purchase of carpets or furniture. Please see our Sales Executive for full specification and plot details at this development.

**CONSUMER  
CODE  
FOR  
HOME BUILDERS**  
[www.consumercode.co.uk](http://www.consumercode.co.uk)



Artists impression, features may vary

## THE SHIPLEY 3 bedroom home



### GROUND FLOOR

Kitchen / Dining	3924 x 5653	12'11" x 18'7"
Lounge	3338 x 5653	10'11" x 18'7"
WC	956 x 1582	3'2" x 5'2"

➤ Longest measurement taken

### FIRST FLOOR

Bedroom 1	3949 x 3145	12'11" x 10'4"
En-suite	1650 x 1600	5'5" x 5'3"
Bedroom 2	3338 x 3155	10'11" x 10'4"
Bedroom 3	3500 x 2416	11'6" x 7'11"
Bathroom	2245 x 2050	7'4" x 6'9"

**Overall 88.11 SQ M 948 SQ FT**

#### PLEASE NOTE:

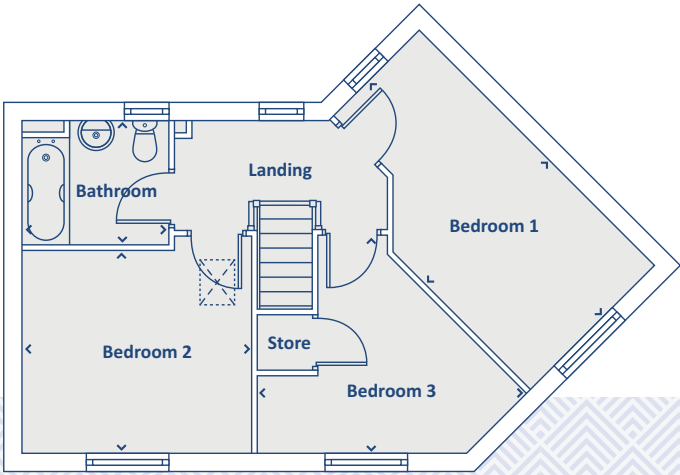
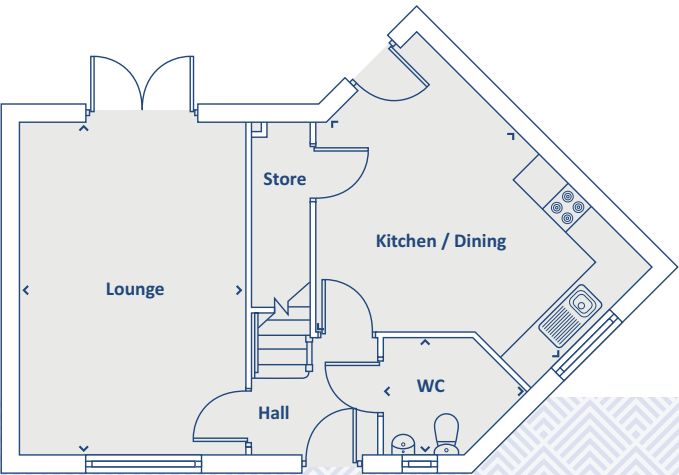
For illustration purposes only. All dimensions are + or - 50mm and these measurements should not be used for the purchase of carpets or furniture. Please see our Sales Executive for full specification and plot details at this development.

**CONSUMER  
CODE FOR  
HOME BUILDERS**  
[www.consumercode.co.uk](http://www.consumercode.co.uk)



Artists impression, features may vary

# THE DOVENBY 3 bedroom home



## GROUND FLOOR

Kitchen / Dining	4493 x 5185	14'9" x 17'0"
Lounge	3500 x 5185	11'6" x 17'0"
WC	2236 x 1800	7'4" x 5'11"

➤ Longest measurement taken

**PLEASE NOTE:**  
For illustration purposes only. All dimensions are + or - 50mm and these measurements should not be used for the purchase of carpets or furniture. Please see our Sales Executive for full specification and plot details at this development.

## FIRST FLOOR

Bedroom 1	2775 x 5185	9'1" x 17'0"
Bedroom 2	3557 x 3160	11'8" x 10'4"
Bedroom 3	4230 x 3392	13'11" x 11'2"
Bathroom	2300 x 1914	7'7" x 6'3"

**Overall 93.16 SQ M 1003 SQ FT**

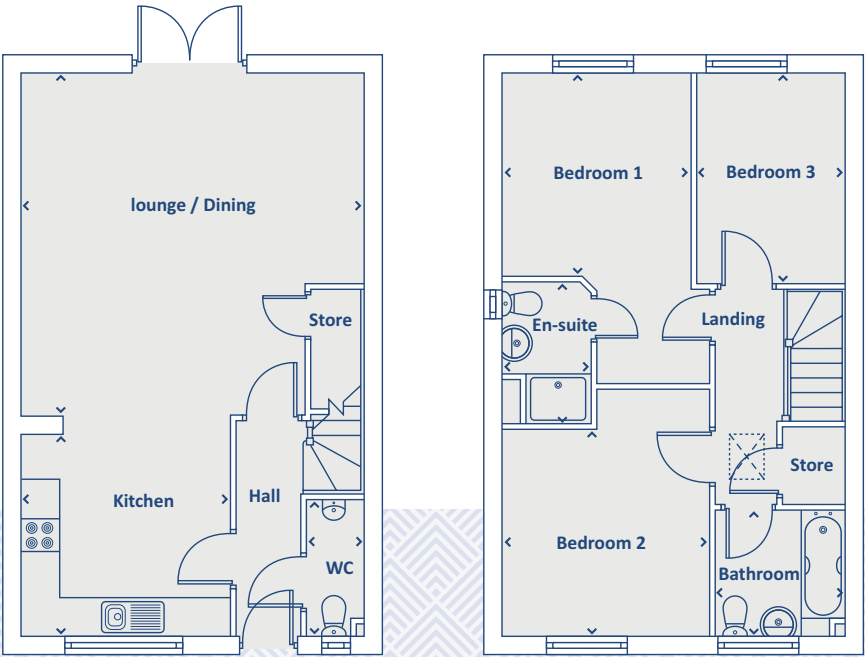
**CONSUMER  
CODE  
FOR  
HOME BUILDERS**  
[www.consumercode.co.uk](http://www.consumercode.co.uk)





Artists impression, features may vary

# THE WHITLEY 3 bedroom home



## GROUND FLOOR

Kitchen	3431 x 3254	11'3" x 10'8"
Lounge / Dining	5354 x 5343	17'7" x 17'6"
WC	2090 x 903	6'10" x 3'0"

➤ Longest measurement taken

**PLEASE NOTE:**  
For illustration purposes only. All dimensions are + or - 50mm and these measurements should not be used for the purchase of carpets or furniture. Please see our Sales Executive for full specification and plot details at this development.

## FIRST FLOOR

Bedroom 1	3185 x 2960	10'5" x 9'9"
En-suite	2194 x 1347	7'2" x 4'5"
Bedroom 2	3820 x 3240	12'6" x 10'8"
Bedroom 3	3293 x 2290	10'10" x 7'6"
Bathroom	1940 x 2010	6'4" x 6'7"

**Overall 93.87 SQ M 1010 SQ FT**

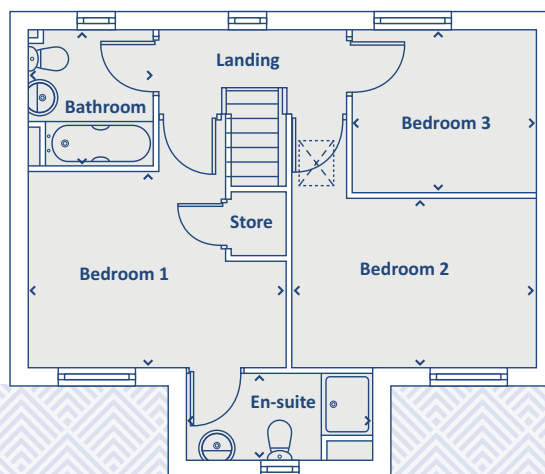
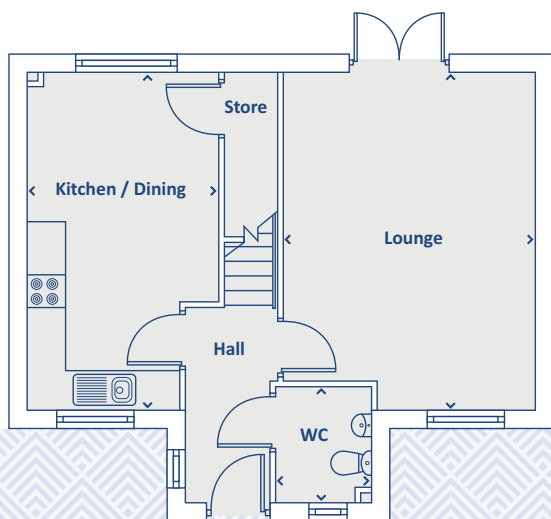
**CONSUMER  
CODE FOR  
HOME BUILDERS**  
[www.consumercode.co.uk](http://www.consumercode.co.uk)





Artists impression, features may vary

## THE EMBLETON 3 bedroom home



### GROUND FLOOR

Kitchen / Dining	3008 x 5298	9'10" x 17'5"
Lounge	3949 x 5298	12'11" x 17'5"
WC	1500 x 1800	4'11" x 5'11"

➤ Longest measurement taken

### FIRST FLOOR

Bedroom 1	3956 x 3055	13'0" x 10'0"
En-suite	2927 x 1370	9'7" x 4'6"
Bedroom 2	3949 x 2620	12'11" x 8'7"
Bedroom 3	2904 x 2585	9'6" x 8'6"
Bathroom	1945 x 2150	6'5" x 7'1"

**Overall 93.32 SQ M 1004 SQ FT**

#### PLEASE NOTE:

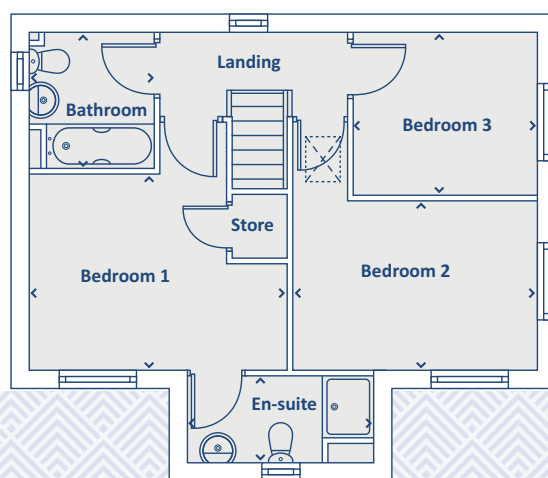
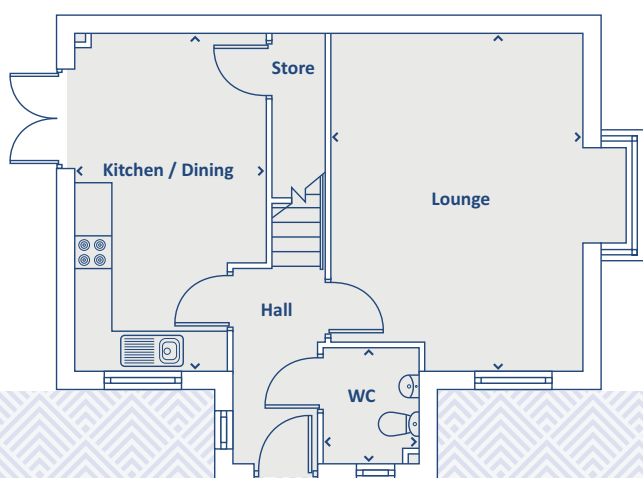
For illustration purposes only. All dimensions are + or - 50mm and these measurements should not be used for the purchase of carpets or furniture. Please see our Sales Executive for full specification and plot details at this development.

**CONSUMER  
CODE FOR  
HOME BUILDERS**  
[www.consumercode.co.uk](http://www.consumercode.co.uk)



Artists impression, features may vary

## THE FOXHILL 3 bedroom home



### GROUND FLOOR

Kitchen / Dining	3008 x 5298	9'10" x 17'5"
Lounge	3949 x 5298	12'11" x 17'5"
WC	1445 x 1800	4'9" x 5'11"

➤ Longest measurement taken

### FIRST FLOOR

Bedroom 1	3958 x 3058	13'0" x 10'0"
En-suite	2927 x 1370	9'7" x 4'6"
Bedroom 2	3947 x 2620	12'11" x 8'7"
Bedroom 3	2904 x 2585	9'6" x 8'6"
Bathroom	1945 x 2150	6'5" x 7'1"

**Overall 94.31 SQ M 1015 SQ FT**

#### PLEASE NOTE:

For illustration purposes only. All dimensions are + or - 50mm and these measurements should not be used for the purchase of carpets or furniture. Please see our Sales Executive for full specification and plot details at this development.

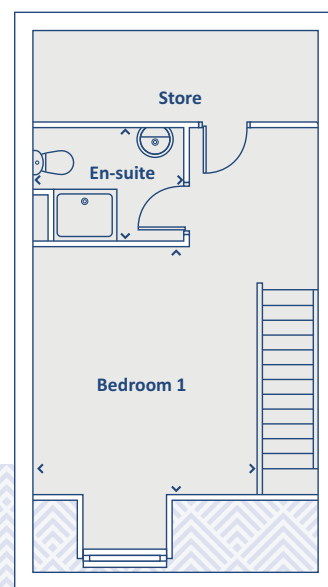
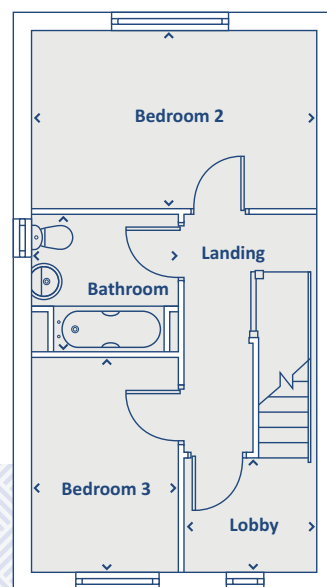
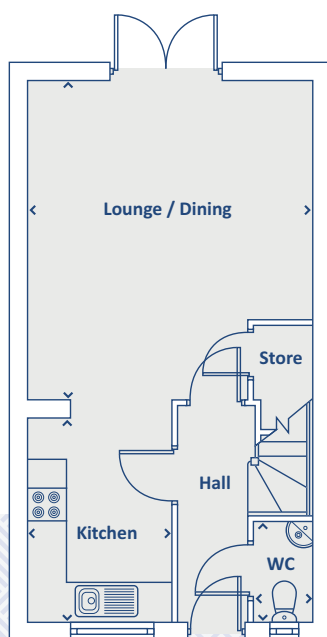
**CONSUMER  
CODE FOR  
HOME BUILDERS**  
[www.consumercode.co.uk](http://www.consumercode.co.uk)





Artists impression, features may vary

## THE DRAYTON 3 bedroom home



### GROUND FLOOR

Lounge / Dining	4386 x 4955	14'5" x 16'3"
Kitchen	2261 x 3400	7'5" x 11'2"
WC	889 x 1573	2'11" x 5'2"

### FIRST FLOOR

Bedroom 2	4386 x 2750	14'5" x 9'0"
Bedroom 3	2270 x 3350	7'5" x 11'0"
Lobby	2023 x 1780	6'8" x 5'10"
Bathroom	2270 x 2162	7'5" x 7'1"

### SECOND FLOOR

Bedroom 1	4386 x 3267	14'5" x 10'9"
En-suite	2351 x 1754	7'9" x 5'9"
<b>Overall</b>	<b>100.06 SQ M</b>	<b>1077 SQ FT</b>

➤ Longest measurement taken

#### PLEASE NOTE:

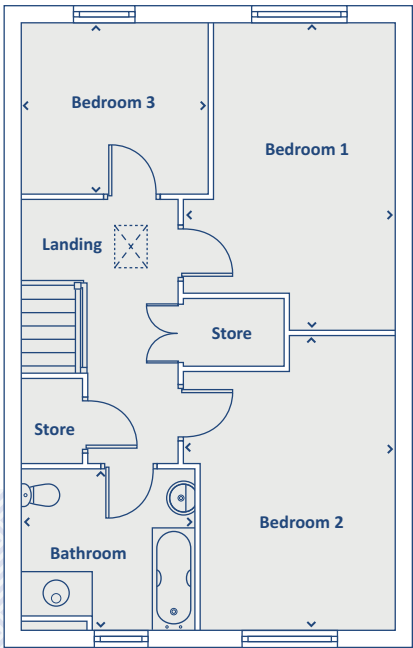
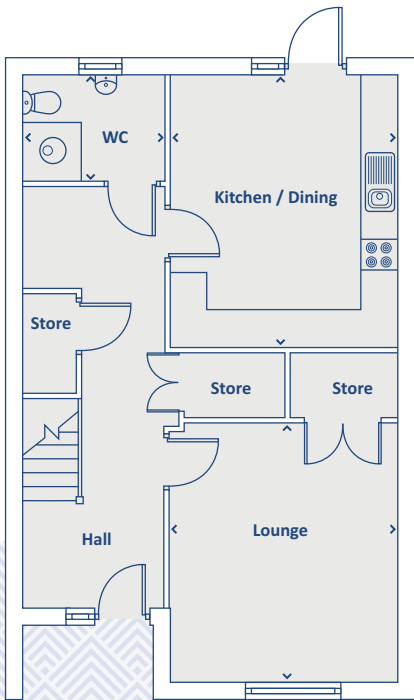
For illustration purposes only. All dimensions are + or - 50mm and these measurements should not be used for the purchase of carpets or furniture. Please see our Sales Executive for full specification and plot details at this development.

**CONSUMER  
CODE  
FOR  
HOME BUILDERS**  
[www.consumercode.co.uk](http://www.consumercode.co.uk)



Artists impression, features may vary

# THE WESTBROOK 3 bedroom home



## GROUND FLOOR

Kitchen / Dining	3728 x 4514	12'4" x 14'10"
Lounge	3768 x 4335	12'4" x 14'3"
WC	2364 x 1750	7'9" x 5'9"

➤ Longest measurement taken

**PLEASE NOTE:**  
For illustration purposes only. All dimensions are + or - 50mm and these measurements should not be used for the purchase of carpets or furniture. Please see our Sales Executive for full specification and plot details at this development.

## FIRST FLOOR

Bedroom 1	3534 x 4514	11'7" x 14'10"
Bedroom 2	3534 x 4919	11'7" x 16'2"
Bedroom 3	3150 x 2866	10'4" x 9'5"
Bathroom	2900 x 2700	9'6" x 8'10"

**Overall 123.47 SQ M 1329 SQ FT**

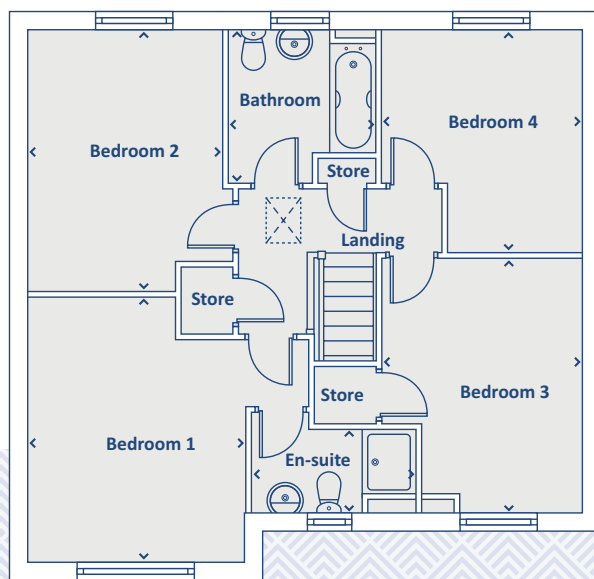
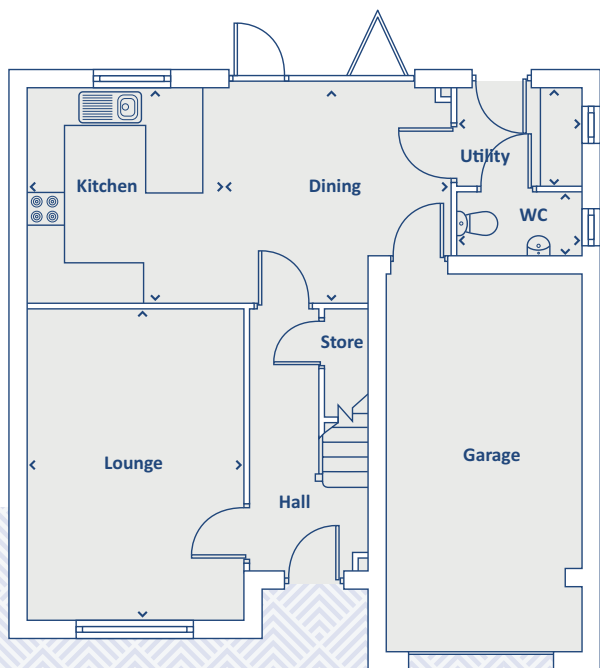
**CONSUMER  
CODE FOR  
HOME BUILDERS**  
[www.consumercode.co.uk](http://www.consumercode.co.uk)





Artists impression, features may vary

## THE TIVERTON 4 bedroom home



### GROUND FLOOR

Kitchen	3036 x 3342	10'0" x 11'0"
Dining	3595 x 3342	11'10" x 11'0"
Lounge	3385 x 4843	11'1" x 15'11"
Utility	1893 x 1542	6'3" x 5'1"
WC	1893 x 999	6'3" x 3'3"

➤ Longest measurement taken

### FIRST FLOOR

Bedroom 1	3385 x 4150	11'1" x 13'7"
En-suite	2567 x 1543	8'5" x 5'1"
Bedroom 2	3042 x 4092	10'0" x 13'5"
Bedroom 3	3145 x 3948	10'4" x 12'11"
Bedroom 4	3135 x 3506	10'3" x 11'6"
Bathroom	2285 x 2424	7'6" x 7'11"

**Overall 120.34 SQ M 1295 SQ FT**

#### PLEASE NOTE:

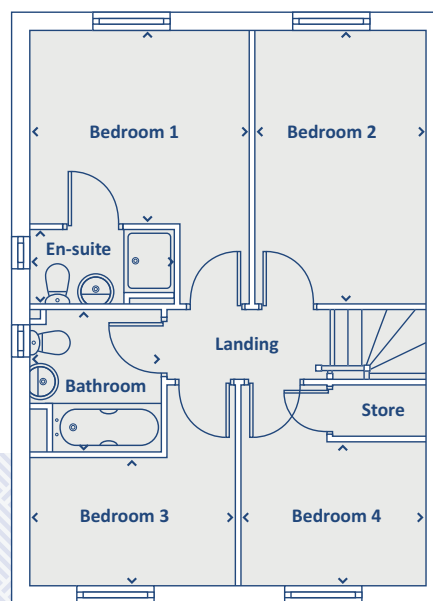
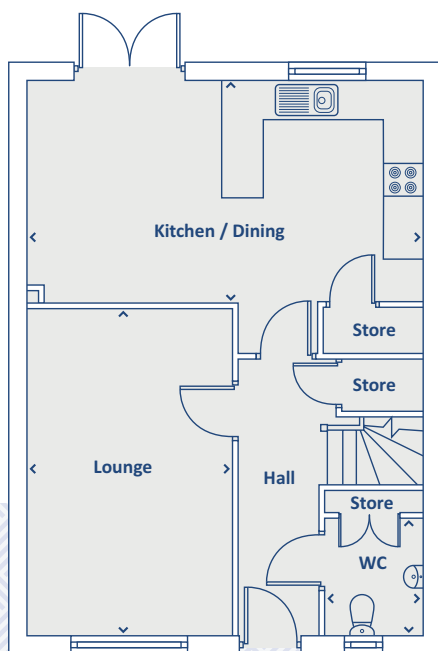
For illustration purposes only. All dimensions are + or - 50mm and these measurements should not be used for the purchase of carpets or furniture. Please see our Sales Executive for full specification and plot details at this development.

**CONSUMER  
CODE FOR  
HOME BUILDERS**  
[www.consumercode.co.uk](http://www.consumercode.co.uk)



Artists impression, features may vary

## THE LAMBETH 4 bedroom home



### GROUND FLOOR

Kitchen / Dining	3463 x 6130	11'4" x 20'1"
Lounge	5060 X 3150	16'7" X 10'4"
WC	1800 X 1450	5'11" X 4'9"

➤ Longest measurement taken

### FIRST FLOOR

Bedroom 1	3022 X 3362	9'11" X 11'0"
En-suite	1185 x 2214	3'11" x 7'3"
Bedroom 2	4300 X 2675	14'1" X 8'9"
Bedroom 3	2001 X 3177	6'7" X 10'5"
Bedroom 4	2232 X 2860	7'4" X 9'5"
Bathroom	2150 X 2000	7'1" X 6'7"

**Overall 106.32 SQ M 1144 SQ FT**

#### PLEASE NOTE:

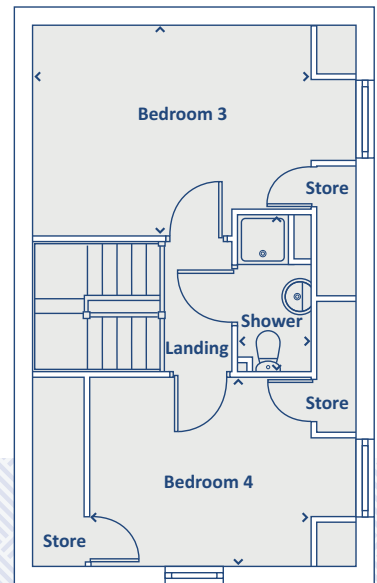
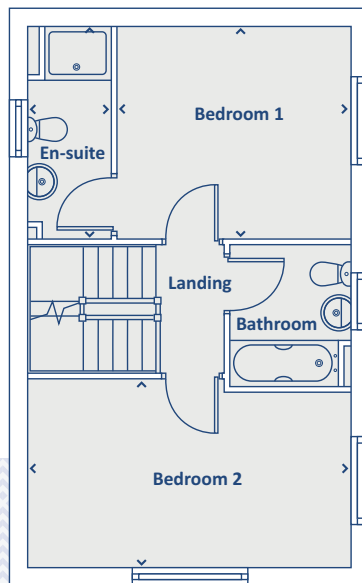
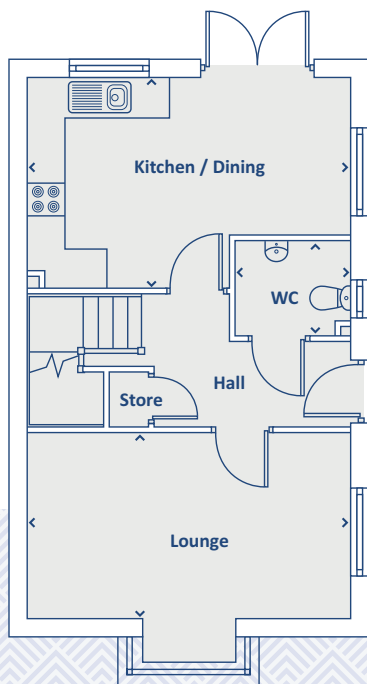
For illustration purposes only. All dimensions are + or - 50mm and these measurements should not be used for the purchase of carpets or furniture. Please see our Sales Executive for full specification and plot details at this development.

**CONSUMER  
CODE FOR  
HOME BUILDERS**  
[www.consumercode.co.uk](http://www.consumercode.co.uk)



Artists impression, features may vary

## THE OAKWOOD 4 bedroom home



### GROUND FLOOR

Kitchen / Dining	3246 x 5073	10'8" x 16'8"
Lounge	2937 x 5073	9'8" x 16'8"
WC	1450 x 1800	4'9" x 5'11"

### FIRST FLOOR

Bedroom 1	3297 x 3665	10'10" x 12'0"
En-suite	3286 x 1307	10'9" x 4'3"
Bedroom 2	2937 x 5073	9'8" x 16'8"
Bathroom	2200 x 1900	7'3" x 6'3"

### SECOND FLOOR

Bedroom 3	3297 x 4378	10'10" x 14'4"
Bedroom 4	2937 x 3458	9'8" x 11'4"
Shower	2432 x 1149	8'0" x 3'9"

**Overall 119.51 SQ M 1286 SQ FT**

➤ Longest measurement taken

#### PLEASE NOTE:

For illustration purposes only. All dimensions are + or - 50mm and these measurements should not be used for the purchase of carpets or furniture. Please see our Sales Executive for full specification and plot details at this development.

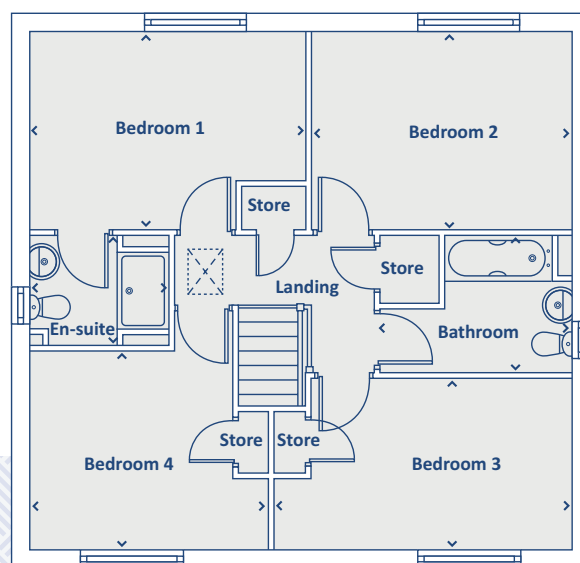
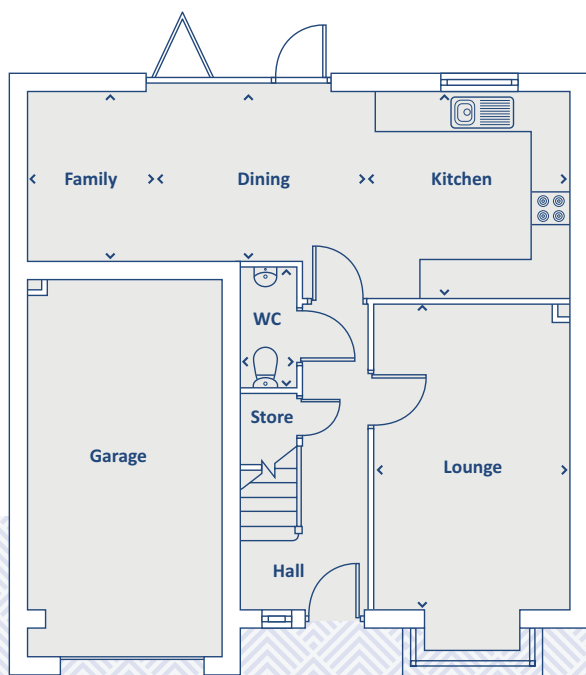
**CONSUMER  
CODE FOR  
HOME BUILDERS**  
[www.consumercode.co.uk](http://www.consumercode.co.uk)





Artists impression, features may vary

## THE CLUMBER 4 bedroom home



### GROUND FLOOR

Kitchen	3200 x 3168	10'6" x 10'5"
Dining	2630 x 3259	8'8" x 10'8"
Family	2630 x 1996	8'8" x 6'7"
Lounge	4760 x 3038	15'7" x 10'0"
WC	1840 x 895	6'0" x 2'11"

➤ Longest measurement taken

### FIRST FLOOR

Bedroom 1	3088 x 4310	10'2" x 14'2"
En-suite	1712 x 2138	5'7" x 7'0"
Bedroom 2	3088 x 4045	10'2" x 13'3"
Bedroom 3	2700 x 4635	8'10" x 15'2"
Bedroom 4	3100 x 3720	10'2" x 12'2"
Bathroom	2111 x 2958	6'11" x 9'8"

**Overall 120.28 SQ M 1295 SQ FT**

#### PLEASE NOTE:

For illustration purposes only. All dimensions are + or - 50mm and these measurements should not be used for the purchase of carpets or furniture. Please see our Sales Executive for full specification and plot details at this development.

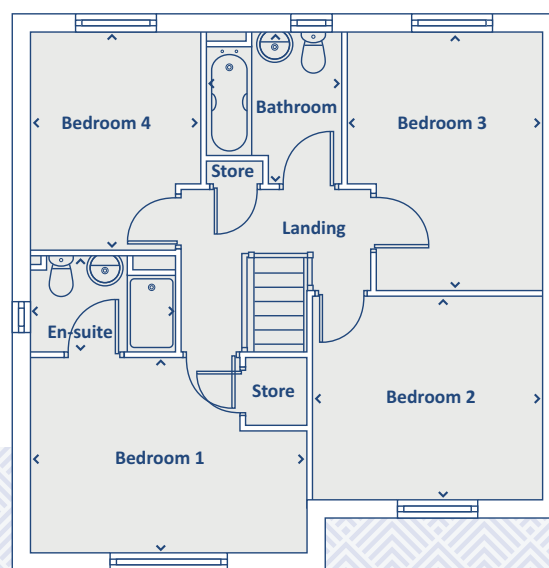
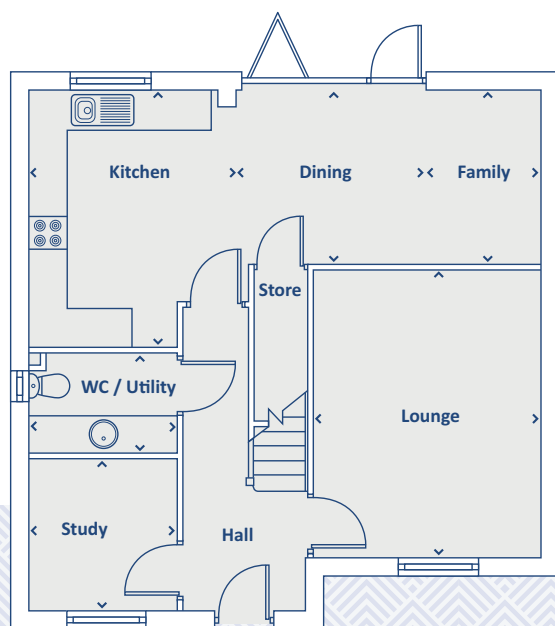
**CONSUMER  
CODE FOR  
HOME BUILDERS**  
[www.consumercode.co.uk](http://www.consumercode.co.uk)





Artists impression, features may vary

## THE SOMERHILL 4 bedroom home



### GROUND FLOOR

Kitchen	2953 x 4000	9'8" x 13'1"
Dining	3242 x 2676	10'8" x 8'9"
Family	1803 x 2676	5'11" x 8'9"
Lounge	3563 x 4497	11'8" x 14'9"
Study	2280 x 2336	7'6" x 7'8"
WC / Utility	2280 x 1552	7'6" x 5'1"

› Longest measurement taken

#### PLEASE NOTE:

For illustration purposes only. All dimensions are + or - 50mm and these measurements should not be used for the purchase of carpets or furniture. Please see our Sales Executive for full specification and plot details at this development.

### FIRST FLOOR

Bedroom 1	4285 x 3026	14'1" x 9'11"
En-suite	2250 x 1500	7'5" x 4'11"
Bedroom 2	3620 x 3200	11'11" x 10'6"
Bedroom 3	3051 x 4029	10'0" x 13'3"
Bedroom 4	2650 x 3398	8'8" x 11'2"
Bathroom	2112 x 2355	6'11" x 7'9"

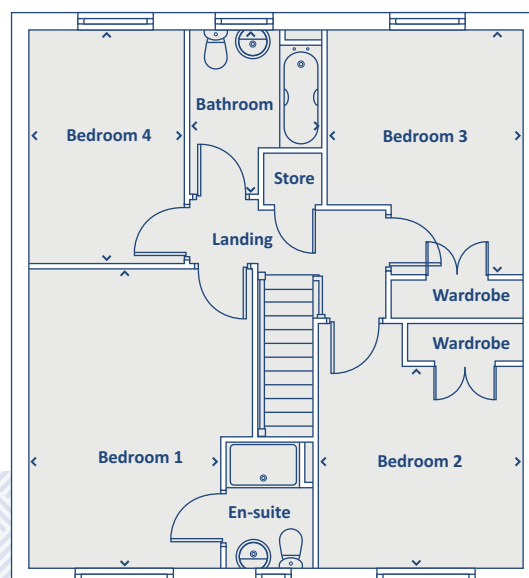
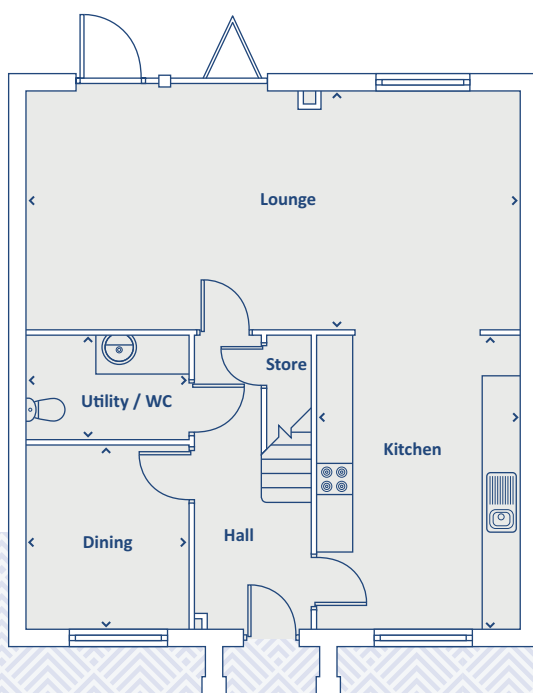
**Overall 123.88 SQ M 1333 SQ FT**

**CONSUMER  
CODE FOR  
HOME BUILDERS**  
[www.consumercode.co.uk](http://www.consumercode.co.uk)



Artists impression, features may vary

## THE NESTON 4 bedroom home



### GROUND FLOOR

Kitchen	4794 x 3346	15'9" x 11'0"
Lounge	3901 x 8110	12'10" x 26'7"
Dining	3039 x 2666	10'0" x 8'9"
Utility / WC	1662 x 2666	5'5" x 8'9"

➤ Longest measurement taken

### FIRST FLOOR

Bedroom 1	4912 x 3146	16'1" x 10'4"
En-suite	2073 x 1435	6'10" x 4'8"
Bedroom 2	3303 x 3343	10'10" x 11'0"
Bedroom 3	4016 x 3196	13'2" x 10'6"
Bedroom 4	3840 x 2557	12'7" x 8'5"
Bathroom	2691 x 2171	8'10" x 7'1"

**Overall 99.66 SQ M 1073 SQ FT**

#### PLEASE NOTE:

For illustration purposes only. All dimensions are + or - 50mm and these measurements should not be used for the purchase of carpets or furniture. Please see our Sales Executive for full specification and plot details at this development.

**CONSUMER  
CODE FOR  
HOME BUILDERS**  
[www.consumercode.co.uk](http://www.consumercode.co.uk)

# GLENVALE PARK



WELLINGBOROUGH

All enquiries:

**01933 697 169**

or email: [glenvalepark@keepmoat.com](mailto:glenvalepark@keepmoat.com)



[keepmoat.com](http://keepmoat.com)

This brochure has been produced as a guide to assist intending purchasers in the selection of their new home. Its content does not form part of any contract.