



6 Acton Farm Barns

Stourport-On-Severn | Worcestershire

6 Acton Farm Barns, Stourport-On-Severn, Worcestershire

- Stunning barn conversion of 2,400 sq.ft in total
- Expansive kitchen and dining room with vaulted ceiling
- Separate sitting room
- Views over the large rear garden
- Kitchen with built-in appliances and range-style cooker
- Kitchen island with contrasting worktops
- Log burner for chilly evenings
- Open layout for seamless flow between spaces
- Luxurious master bedroom with a fabulous bathroom and dressing room
- Two additional bedrooms serviced by a separate shower room
- Annexe - sitting room/kitchen, shower room, staircase to first floor / work from home/office.
- Two versatile studio rooms for guest accommodation, home office, or creative workspace
- Landscaped gardens with vibrant flower beds, evergreen shrubs, and mature trees
- Private patio area
- Garden shed/stable for additional storage
- Side access through a five-bar gate to extra garden
- Two separate gravelled driveways for multiple vehicle parking





Stunning Barn Conversion with Potential Annexe

Situated in a picturesque setting, in its own private courtyard, this gorgeous, detached single-storey barn conversion offers a unique blend of character and modern luxury, spanning an impressive 2,400 sqft of beautifully presented accommodation.

Open Plan Living, where an expansive open plan kitchen and dining room with vaulted ceiling creates a sense of space with natural light streaming through the windows, perfect for entertaining family and friends.

Enjoy views over the large rear garden as you sit in the garden room; the well crafted kitchen has a range of wall and base units, and kitchen island, all in a soft cream finish with contrasting worktops. Equipped with built-in appliances and a range-style cooker.

Unwind in the lovely sitting room accentuated by a log burner, ideal for chilly evenings. The open layout ensures a seamless flow between spaces, making this home perfect for modern living.

Master Bedroom Suite complete with a fabulous bathroom and dressing room that exudes elegance and comfort. Two additional bedrooms are thoughtfully serviced by a separate shower room, ensuring ample space for family or guests.

Situated in the courtyard is the ANNEXE comprising - sitting room/kitchen, separate shower room, staircase to first floor, two





versatile studio rooms that can cater to a variety of needs - work from home office

A beautifully landscaped garden that blooms with vibrant spring and summer flower beds, evergreen shrubs, and mature trees. A private patio area to relax outdoors, while a garden shed/stable offers additional storage. Side access through a five-bar gate provides a further garden area.

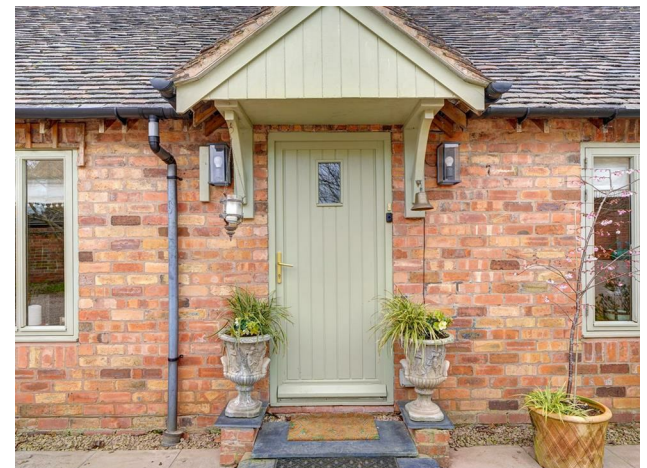
With two separate gravelled driveways, you'll have ample space for parking multiple vehicles, ensuring ease of access for you and your guests.

The property is situated in the small settlement of Acton, within the Borough of Ombersley which has a number of amenities - including several Public Houses, Restaurant, Doctors Surgery, Primary School and shops. Within easy reach are the towns of Droitwich, Kidderminster and Stourport, as well as the City of Worcester, offering a wider range of amenities. For commuters, the A449 links directly to Junction 6 of the M5 motorway, giving access North and South.

Mains Water - Mains Electricity - Night Storage Heaters and Electric Heaters - Septic Tank - Tax Band G

Administrative Deposit:

Fox Town and Country Homes requires a £1,000.00 deposit payable by the purchaser prior to issuing the Memorandum of Sale. This will be reimbursed at the point of completion. If you decide to withdraw from the purchase this deposit may not be reimbursed and the deposit collected either in part or in full and retained by Fox Town and Country Homes to cover administration and re-marketing costs of the property. **THIS IS REFUNDABLE UPON COMPLETION**

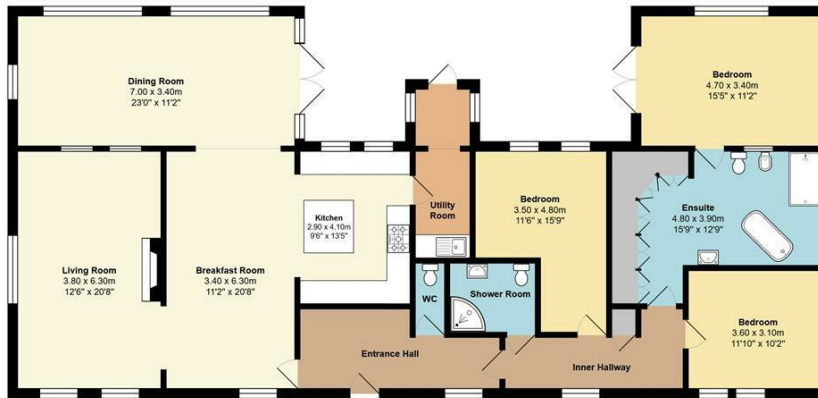




6



6, Acton Farm Barns, Acton Lane, Ombersley, DY13 9TE

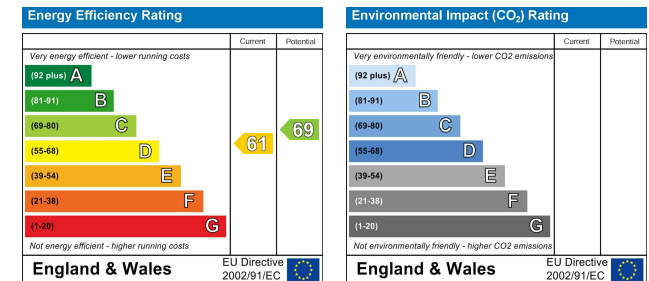


Ground Floor



First Floor

Total Approx Area: 223.0 m² ... 2400 ft²
 All measurements of doors, windows, rooms are approximate and for display purposes only.
 No responsibility is taken for any error, omission or mis-statement.
 This plan is for illustrative purposes only and should be used as such by any prospective purchaser.
 The services, systems and appliances shown have not been tested and no guarantee
 as to the operability or efficiency can be given.



Tel: 01684 210950 or 01905 947640

contact@foxtownandcountryhomes.co.uk

39, Worcester Road, Malvern, Worcestershire, WR14 4RB

www.foxtownandcountryhomes.co.uk

