



*Fox Town and Country Homes*

68, Martley Road

Worcester | | WR2 6HH





**68, Martley Road,  
Worcester, WR2 6HH**

- Planning Permission Granted For a 4 Bedroomed Detached House - Ref 23/00367/fulreplacementdwelling
- Existing Property - Spacious and Versatile Accommodation
- Three Bedrooms
- Large Living Room
- Kitchen
- Breakfast Room
- Mature Gardens
- Ample Car Parking

Situated between Worcester and Martley, this detached bungalow offers an opportunity to create a family home set within private, mature gardens, with 1,130 sqft of spacious and versatile accommodation. However, Planning Permission has been granted to demolish the existing bungalow to build a fabulous four-bedroomed detached home. The heart of the existing bungalow has open-plan kitchen dining room, creating a seamless flow for entertaining or family gatherings. The kitchen effortlessly transitions into the breakfast room with the layout of the kitchen designed with versatility in mind, offering a seamless transition from cooking to dining with ample room to move around. Whilst the kitchen has modern conveniences and a functional layout, there's also room for personal enhancement. Whether you want sleek new appliances, custom cabinetry, or stylish finishes, the kitchen serves as a blank canvas.







*Fox Town and Country Homes*



There are two large bedrooms and a good-sized third bedroom, this bungalow offers ample space for a growing family. A separate shower room services the bedrooms

While the property requires some improvement and decoration, it presents an exciting opportunity to personalise and enhance according to your taste and preferences. Embark on a transformation at your own pace, creating a home that reflects your needs and wants.

The secluded mature gardens provide added privacy, spring and summer flower beds, mature evergreens and mature trees. With ample car parking available, you and your guests can enjoy the convenience of easy access to your doorstep.

Mains Drainage  
Mains Electric  
Mains Gas  
Mains Water  
Council Tax Band - E  
EPC - D

#### Administrative Deposit:

Fox Town and Country Homes requires a £1,000.00 deposit payable by the purchaser prior to issuing the Memorandum of Sale. This will be reimbursed at the point of completion. If you decide to withdraw from the







*Fox Town and Country Homes*



purchase this deposit may not be reimbursed and the deposit collected either in part or in full and retained by Fox Town and Country Homes to cover administration and re-marketing costs of the property.



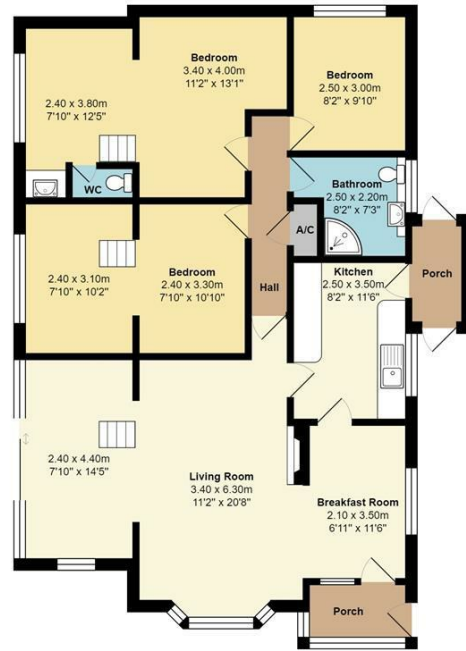




*Fox Town and Country Homes*

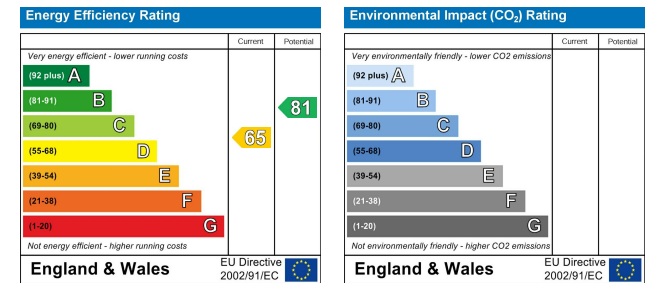


68, Martley Road, Worcester, WR2 6HH



Total Approx Area: 105.0 m<sup>2</sup> ... 1130 ft<sup>2</sup> (excluding porch)

All measurements of doors, windows, rooms are approximate and for display purposes only.  
 No responsibility is taken for any error, omission or mis-statement.  
 This plan is for illustrative purposes only and should be used as such by any prospective purchaser.  
 The services, systems and appliances shown have not been tested and no guarantee as to the operability or efficiency can be given.



Tel: 01684 210950 or 01905 947640  
 contact@foxtownandcountryhomes.co.uk  
 39, Worcester Road, Malvern, Worcestershire, WR14 4RB  
 www.foxtownandcountryhomes.co.uk

