



**1 Bed  
Apartment  
located in**



16, Montpelier Lodge  
Montpelier Terrace  
Brighton  
BN1 3DF



Elegant Seaside Living – Bright & Stylish First-Floor Apartment with Two Parking Spaces

Set within a handsome period building, this beautifully presented first-floor apartment offers a refined blend of classic charm and modern comfort. Bathed in natural light, the spacious interiors are enhanced by high ceilings and timeless hardwood floors, creating an inviting and elegant atmosphere throughout.

The thoughtfully designed layout ensures a smooth flow between the generous living area and the well-proportioned bedrooms. A sleek, contemporary kitchen comes fully equipped—perfect for effortless everyday cooking or entertaining guests.

Ideally positioned just a short stroll from the beach and the vibrant town centre, you'll have everything Brighton has to offer right on your doorstep—from independent cafes and restaurants to boutique shops and local amenities.

Whether you're searching for a stylish coastal retreat, a convenient full-time home, or a prime investment, this apartment ticks all the boxes. And with two private parking spaces—a rare find in such a central location.

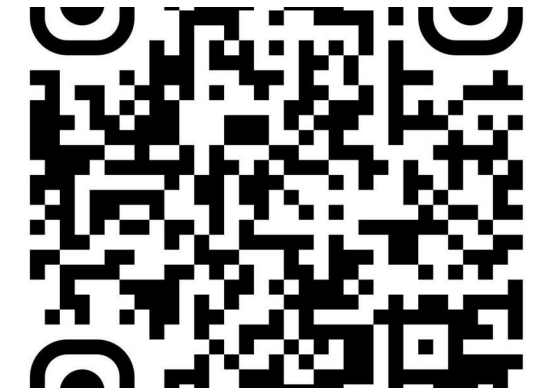
Please contact for more details.

Offers Over £280,000

Nestled in the charming Montpelier Terrace of Brighton, this delightful apartment offers a perfect blend of comfort and convenience. Spanning an impressive 506 square feet, the property features a well-appointed reception room that serves as an inviting space for relaxation and entertainment. The bedroom is thoughtfully designed, providing a peaceful retreat for restful nights.

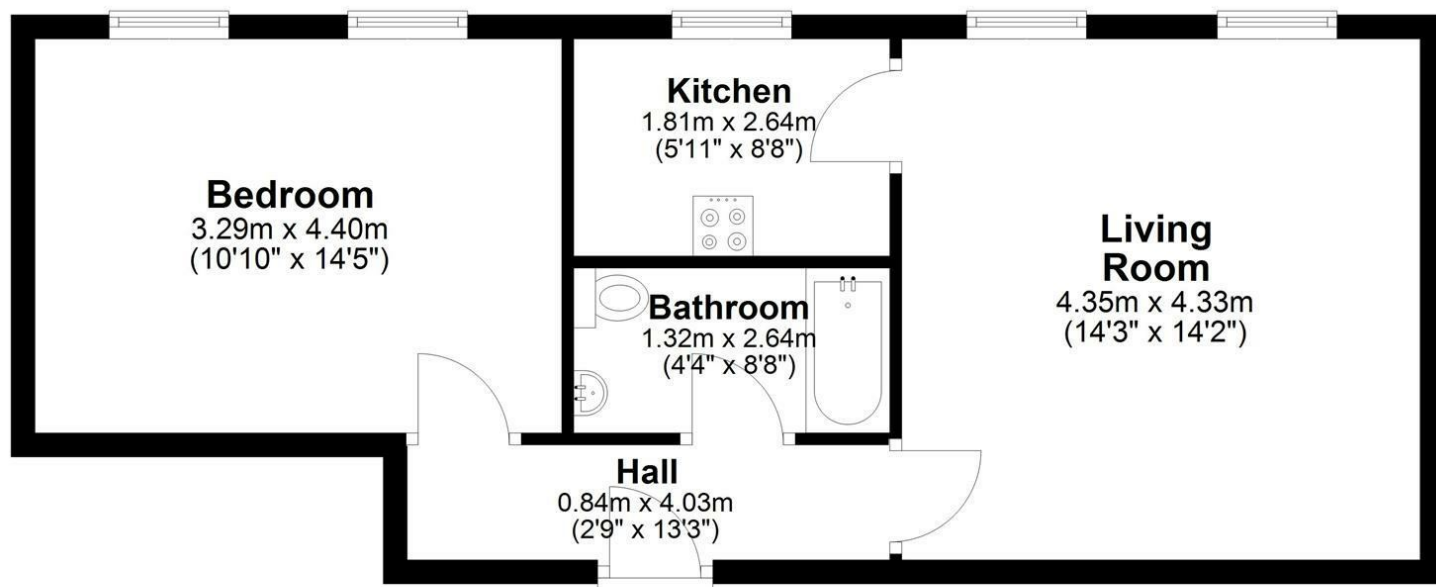
The apartment includes a modern bathroom, ensuring that all your daily needs are met with ease. One of the standout features of this property is the ample parking available for up to three vehicles, a rare find in such a vibrant area.

Montpelier Terrace is renowned for its picturesque surroundings and proximity to the bustling heart of Brighton, where you can enjoy a variety of shops, restaurants, and the stunning coastline. This apartment is an ideal choice for those seeking a stylish and practical living space in one of the UK's most sought-after locations. Whether you are a first-time buyer or looking for a rental investment, this property presents an excellent opportunity to embrace the Brighton lifestyle.



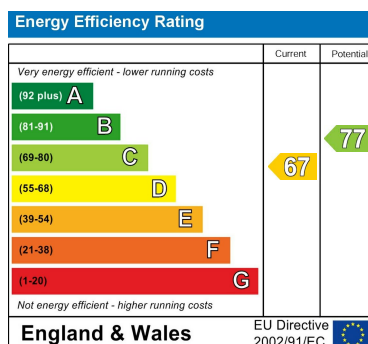
## Apartment

Approx. 46.4 sq. metres (499.4 sq. feet)



Total area: approx. 46.4 sq. metres (499.4 sq. feet)

## Montpelier Lodge



## DIRECTIONS

## CONTACT

64 Queens Road  
Brighton  
East Sussex  
BN1 3XD

E: [info@myhausbrighton.co.uk](mailto:info@myhausbrighton.co.uk)

T: 01273 286788

[myhausbrighton.co.uk](http://myhausbrighton.co.uk)



**MyHausProperty**  
Sales & Lettings