



**3 Bed
House
located in Woodingdean**

 **MyHausProperty**
Sales & Lettings

1 Grove Mews
Woodingdean
Brighton
BN2 6RN



Asking Price £750,000

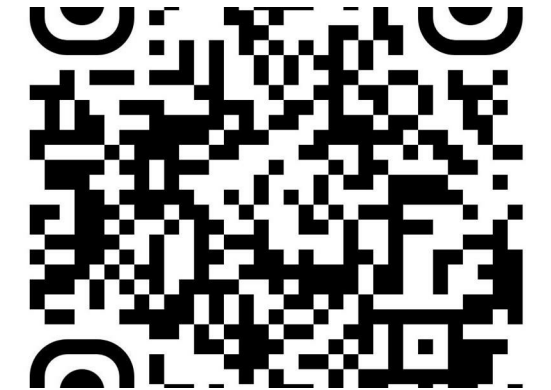
Tucked away in a peaceful, eco-friendly woodland setting, this exclusive collection of architecturally striking homes offers a perfect blend of contemporary design and rustic charm. Thoughtfully designed to complement nature, each home features sustainable elements such as grass roofs, solar panels, smart Nest thermostats, and energy-efficient LED lighting—ensuring stylish yet responsible living.

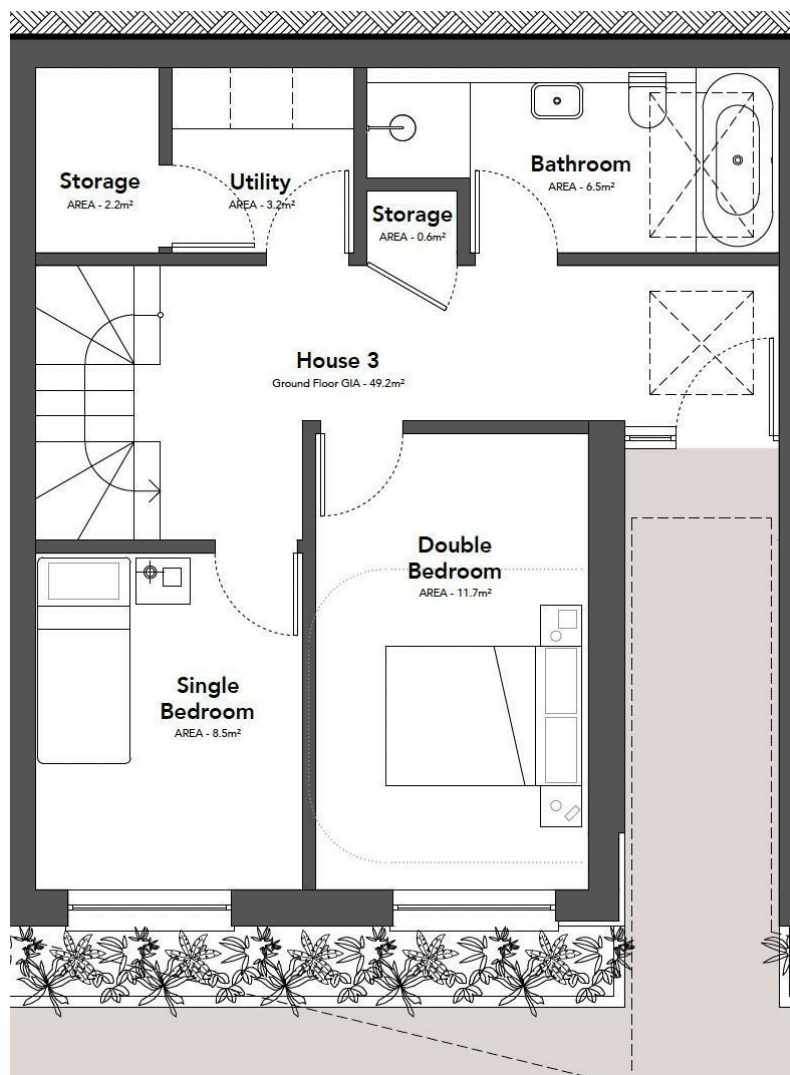
Built with modern lifestyles in mind, these homes offer three spacious bedrooms, including a principal suite with a sleek en-suite shower room and a private front-facing balcony—an ideal spot to unwind. A dedicated ground-floor home office provides the perfect work-from-home setup, balancing productivity with comfort.

Seamlessly connecting indoor and outdoor living, the expansive bifold doors open onto a decked patio and private garden, creating a beautiful space for entertaining or relaxing in the fresh air. Inside, the high-spec German-designed kitchens feature premium appliances, a breakfast bar, and ample space for culinary creativity.

Designed with nature in mind, the development includes wildlife-friendly landscaping to support local biodiversity, while residents benefit from access to well-maintained communal grounds within this private gated community.

Practicality meets style with allocated parking, EV charging points, and carefully chosen interiors, including wood-style flooring in





Energy Efficiency Rating		
	Current	Potential
Very energy efficient - lower running costs		
(92 plus) A		
(81-91) B		
(69-80) C		
(55-68) D		
(39-54) E		
(21-38) F		
(1-20) G		
Not energy efficient - higher running costs		
England & Wales	EU Directive 2002/91/EC	

DIRECTIONS

CONTACT

64 Queens Road
Brighton
East Sussex
BN1 3XD

E: info@myhausbrighton.co.uk

T: 01273 286788

myhausbrighton.co.uk



MyHausProperty
Sales & Lettings