



Yardley Manor

Olney

Development plan

bovishomes.co.uk



Yardley Manor

Olney

2 bedroom home

The Hawthorn

3 bedroom home

The Magnolia

The Hazel

The Spruce

The Spruce II

The Cypress

4 bedroom home

The Chestnut

The Chestnut II

The Aspen

The Maple

The Violet

5 bedroom home

The Birch

The Lime

Affordable housing

bcp bin collection point

ps pumping station

ss substation



Yardley Manor

Yardley Road, Olney, Buckinghamshire MK46 5ED



When you have finished with this leaflet please recycle it.

This plan has been produced for home identification purposes only and may be subject to change. Please check the details of your chosen plot and house type with the sales consultant. Development layout plan correct at time of going to print.

Bovis Homes Limited, Northern Home Counties region
Building 7, Caldecotte Lake Business Park, Milton Keynes, Buckinghamshire MK7 8JU. Telephone: 01908 088 500

Produced by the Vistry Group Design Studio.
MOLNY GD57914 / 06.21





The Magnolia

3 bedroom home

bovishomes.co.uk

**Bovis
Homes** 

The Magnolia

3 bedroom home

Ground floor	metres	feet / inches
Kitchen / dining room	4.74 x 3.37	15' 6" x 11' 0"
Sitting room	3.72 x 3.72	12' 2" x 12' 2"

First floor

Bedroom 1	3.06 x 2.55	10' 0" x 8' 4"
Bedroom 2	3.00 x 2.55	9' 10" x 8' 4"
Bedroom 3	2.81 x 2.10	9' 2" x 6' 10"

The Magnolia | X327 01 MOLNY |

This floorplan has been produced for illustrative purposes only. Room sizes shown are between arrow points as indicated on plan. The dimensions have tolerances of + or -50mm and should not be used other than for general guidance. If specific dimensions are required, enquiries should be made to the sales consultant.

ovn	oven	ffzs	fridge freezer space
h	hob	ldr	larder
ds	dishwasher space	cup'd	cupboard
ws	washing machine space	◀ ▶	measuring points

Please refer to the sales consultant for specific plot details as the illustrations shown are computer generated impressions of how the property may look so are indicative only. External details or finishes may vary on individual plots and homes may be built in either detached or attached styles depending on the development layout. Exact specifications, window styles and whether a property is left or right handed may differ from plot to plot.

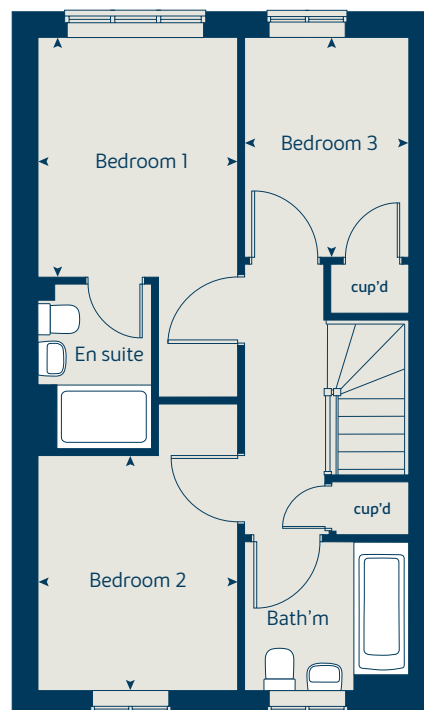
The floorplans shown are not to scale. Measurements are based on the original drawings. Slight variations may occur during construction.

Produced by the Vistry Group Design Studio.

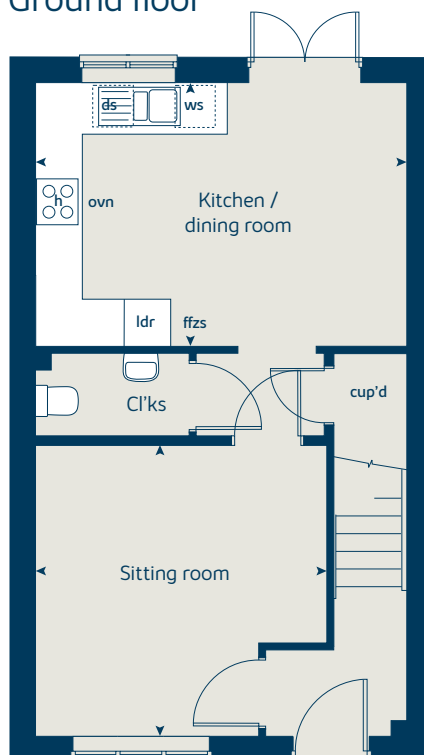
When you have finished with this leaflet please recycle it.

MOLNY GD57914 / 04.21

First floor



Ground floor



MIX
Paper from
responsible sources
FSC® C014177



The Chestnut

4 bedroom home

bovishomes.co.uk

**Bovis
Homes** 

The Chestnut

4 bedroom home

Ground floor	metres	feet / inches
Kitchen	3.97 x 3.04	13' 0" x 10' 0"
Dining / family area	4.59 x 2.85	15' 0" x 9' 4"
Sitting room	4.98 x 3.40	16' 4" x 11' 1"
Study	3.40 x 1.81	11' 1" x 5' 11"

First floor

Bedroom 1	4.46 x 3.23	14' 8" x 10' 7"
Bedroom 2	3.48 x 3.36	11' 5" x 11' 0"
Bedroom 3	3.42 x 2.34	11' 2" x 7' 8"
Bedroom 4	3.25 x 2.35	10' 7" x 7' 8"

The Chestnut | X413 01 / 02 MOLNY |

This floorplan has been produced for illustrative purposes only. Room sizes shown are between arrow points as indicated on plan. The dimensions have tolerances of + or -50mm and should not be used other than for general guidance. If specific dimensions are required, enquiries should be made to the sales consultant.

① Alternative layout applies to plots 39 and 78 only. Please see sales consultant for further details.

② Alternative layout applies to plots 34 and 37 only. Please see sales consultant for further details.

* Window applies to plot 34 only. Please see sales consultant for further details.

** Window applies to plots 34, 37, 39 and 78 only. Please see sales consultant for further details.

ovn	oven	ffzr	fridge freezer
h	hob	w	wardrobe
ds	dishwasher space	cup'd	cupboard
ws	washing machine space	◀ ▶	measuring points
ldr	larder		

Please refer to the sales consultant for specific plot details as the illustrations shown are computer generated impressions of how the property may look so are indicative only. External details or finishes may vary on individual plots and homes may be built in either detached or attached styles depending on the development layout. Exact specifications, window styles and whether a property is left or right handed may differ from plot to plot.

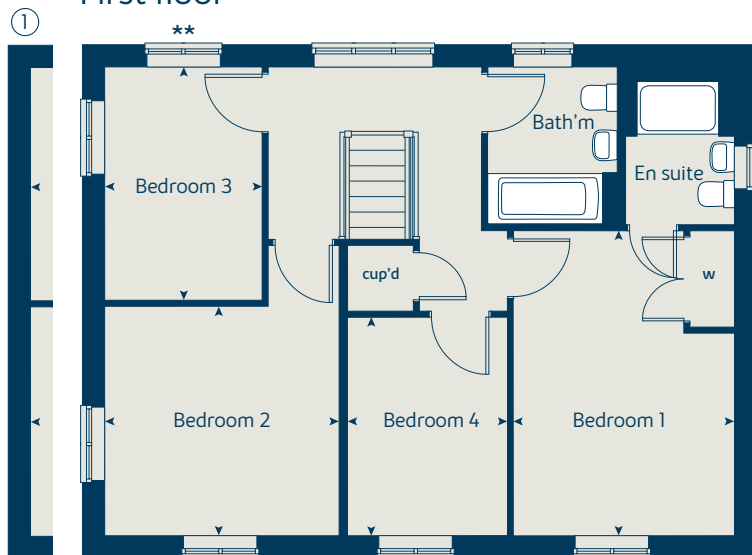
The floorplans shown are not to scale. Measurements are based on the original drawings. Slight variations may occur during construction.

Produced by the Vistry Group Design Studio.

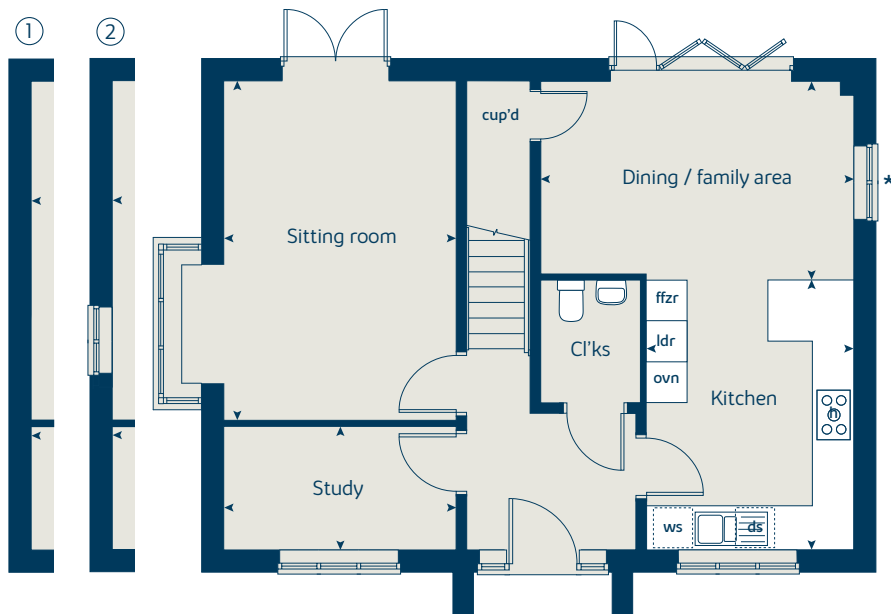
When you have finished with this leaflet please recycle it.

MOLNY GD57914 / 04.21

First floor



Ground floor





The Chestnut II

4 bedroom home

bovishomes.co.uk

**Bovis
Homes** 

The Chestnut II

4 bedroom home

Ground floor	metres	feet / inches
Kitchen	3.97 x 3.04	13' 0" x 10' 0"
Dining / family area	4.59 x 2.85	15' 0" x 9' 4"
Sitting room	4.98 x 3.40	16' 4" x 11' 1"
Study	3.40 x 1.81	11' 1" x 5' 11"

First floor	metres	feet / inches
Bedroom 1	4.46 x 3.23	14' 8" x 10' 7"
Bedroom 2	3.48 x 3.36	11' 5" x 11' 0"
Bedroom 3	3.42 x 2.34	11' 2" x 7' 8"
Bedroom 4	3.25 x 2.35	10' 7" x 7' 8"

The Chestnut II | X413 01 MOLNY |

This floorplan has been produced for illustrative purposes only. Room sizes shown are between arrow points as indicated on plan. The dimensions have tolerances of + or -50mm and should not be used other than for general guidance. If specific dimensions are required, enquiries should be made to the sales consultant.

* Window omitted to plot 79 only. Please see sales consultant for further details.

ovn	oven	ffzr	fridge freezer
h	hob	w	wardrobe
ds	dishwasher space	cup'd	cupboard
ws	washing machine space	◀ ▶	measuring points
ldr	larder		

Please refer to the sales consultant for specific plot details as the illustrations shown are computer generated impressions of how the property may look so are indicative only. External details or finishes may vary on individual plots and homes may be built in either detached or attached styles depending on the development layout. Exact specifications, window styles and whether a property is left or right handed may differ from plot to plot.

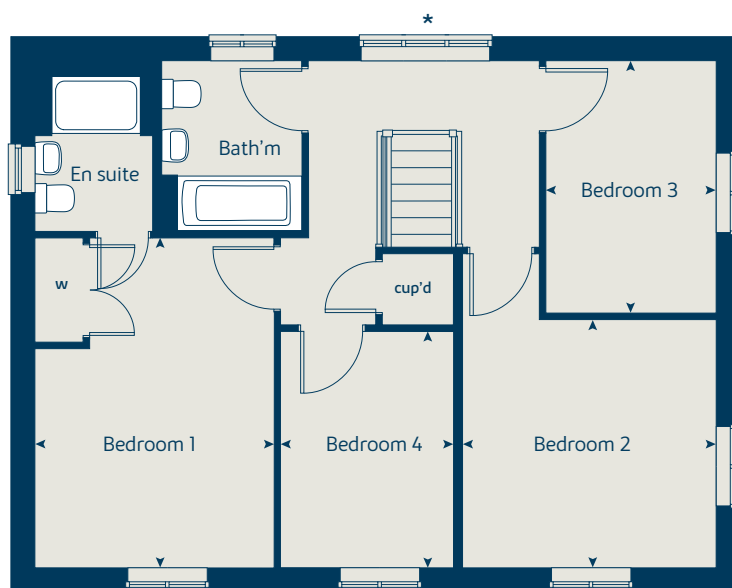
The floorplans shown are not to scale. Measurements are based on the original drawings. Slight variations may occur during construction.

Produced by the Vistry Group Design Studio.

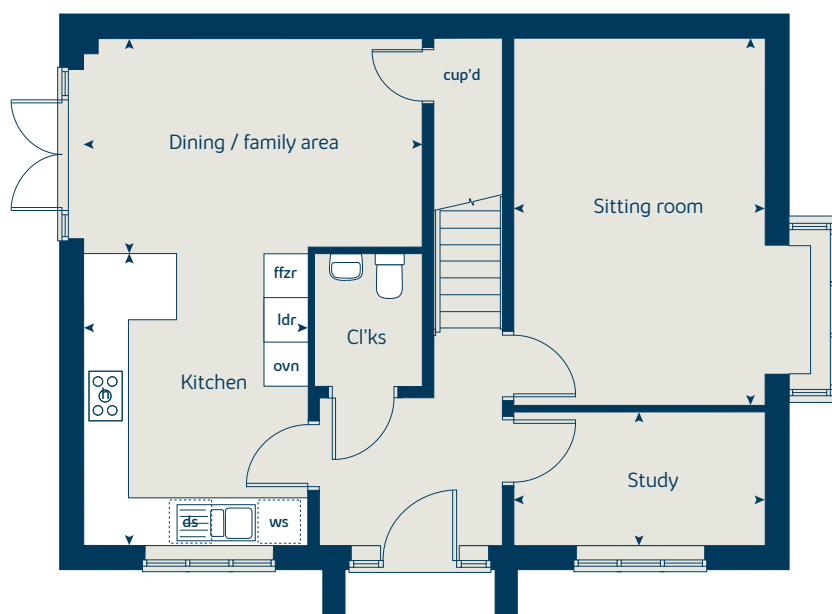
When you have finished with this leaflet please recycle it.

MOLNY GD57914 / 04.21

First floor



Ground floor





The Aspen

4 bedroom home

bovishomes.co.uk

**Bovis
Homes** 

The Aspen

4 bedroom home

Ground floor	metres	feet / inches
Kitchen / dining area	7.77 x 3.37	25' 6" x 11' 0"
Sitting room	5.04 x 3.39	16' 6" x 11' 1"
Study	2.01 x 2.01	6' 7" x 6' 7"

First floor

Bedroom 1	4.50 x 4.07	14' 9" x 13' 5"
Bedroom 2	3.58 x 3.09	11' 9" x 10' 2"
Bedroom 3	4.07 x 2.45	13' 4" x 8' 0"
Bedroom 4	3.61 x 2.45	11' 10" x 8' 0"

The Aspen | X414 (IF) 01 MOLNY |

This floorplan has been produced for illustrative purposes only. Room sizes shown are between arrow points as indicated on plan. The dimensions have tolerances of + or -50mm and should not be used other than for general guidance. If specific dimensions are required, enquiries should be made to the sales consultant.

* Window applies to plots 118 and 125 only. Please see sales consultant for further details.

** Window is openable to plots 118 and 125 only. Please see sales consultant for further details.

ovn	oven	ldr	larder
h	hob	w	wardrobe
ds	dishwasher space	cup'd	cupboard
ws	washing machine space	◀ ▶	measuring points
ffzr	fridge freezer		

Please refer to the sales consultant for specific plot details as the illustrations shown are computer generated impressions of how the property may look so are indicative only. External details or finishes may vary on individual plots and homes may be built in either detached or attached styles depending on the development layout. Exact specifications, window styles and whether a property is left or right handed may differ from plot to plot.

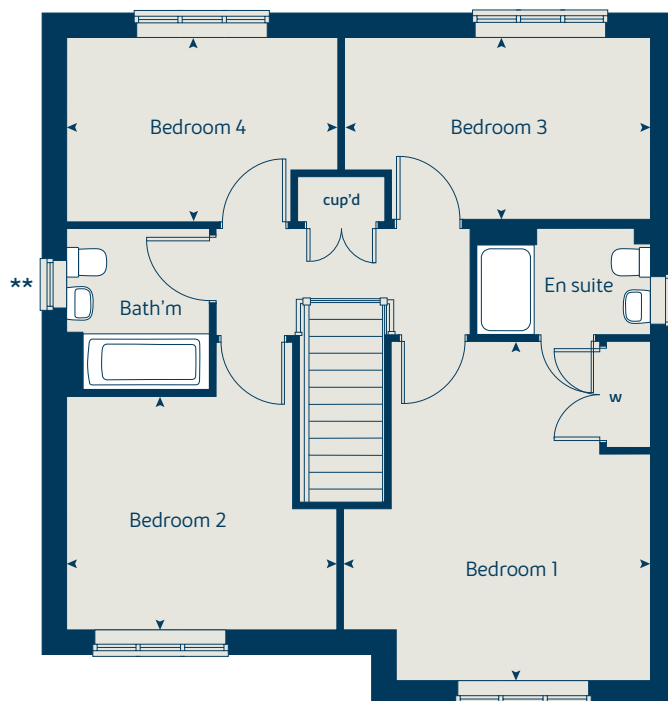
The floorplans shown are not to scale. Measurements are based on the original drawings. Slight variations may occur during construction.

Produced by the Vistry Group Design Studio.

When you have finished with this leaflet please recycle it.

MOLNY GD57914 / 04.21

First floor



Ground floor





The Violet

4 bedroom home

bovishomes.co.uk

**Bovis
Homes** 

The Violet

4 bedroom home

Ground floor	metres	feet / inches
Kitchen / family area	8.00 x 3.66	26' 3" x 12' 0"
Sitting room	4.22 x 4.17	13' 10" x 13' 8"
Study	2.69 x 2.01	8' 10" x 6' 7"

First floor

Bedroom 1	4.17 x 3.81	13' 8" x 12' 6"
Bedroom 2	4.81 x 2.85	15' 10" x 9' 4"
Bedroom 3	3.71 x 3.43	12' 2" x 11' 3"
Bedroom 4	3.67 x 2.71	12' 1" x 8' 11"

The Violet | NHC4B1600 MOLNY |

This floorplan has been produced for illustrative purposes only. Room sizes shown are between arrow points as indicated on plan. The dimensions have tolerances of + or -50mm and should not be used other than for general guidance. If specific dimensions are required, enquiries should be made to the sales consultant.

* Windows applies to plots 6, 27 and 117 only. Please see sales consultant for further details.

ovn	oven	ffzr	fridge freezer
h	hob	w	wardrobe
ds	dishwasher space	cup'd	cupboard
ws	washing machine space	◀ ▶	measuring points

Please refer to the sales consultant for specific plot details as the illustrations shown are computer generated impressions of how the property may look so are indicative only. External details or finishes may vary on individual plots and homes may be built in either detached or attached styles depending on the development layout. Exact specifications, window styles and whether a property is left or right handed may differ from plot to plot.

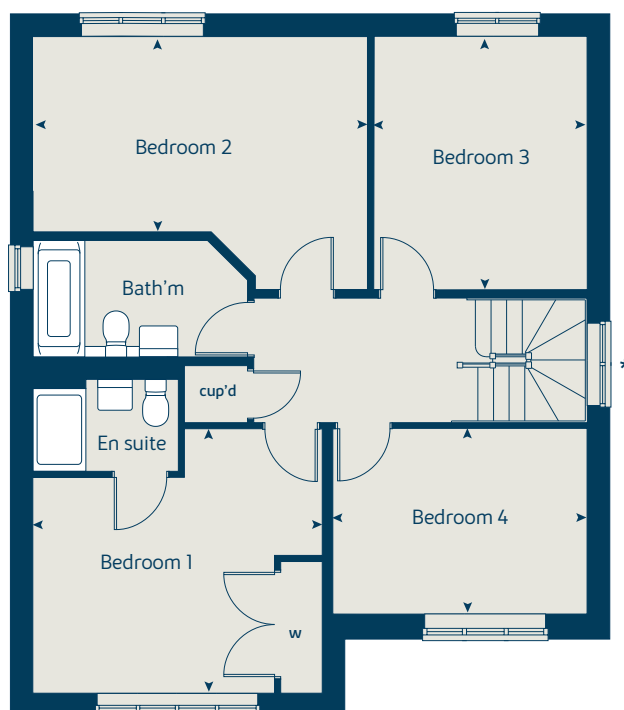
The floorplans shown are not to scale. Measurements are based on the original drawings. Slight variations may occur during construction.

Produced by the Vistry Group Design Studio.

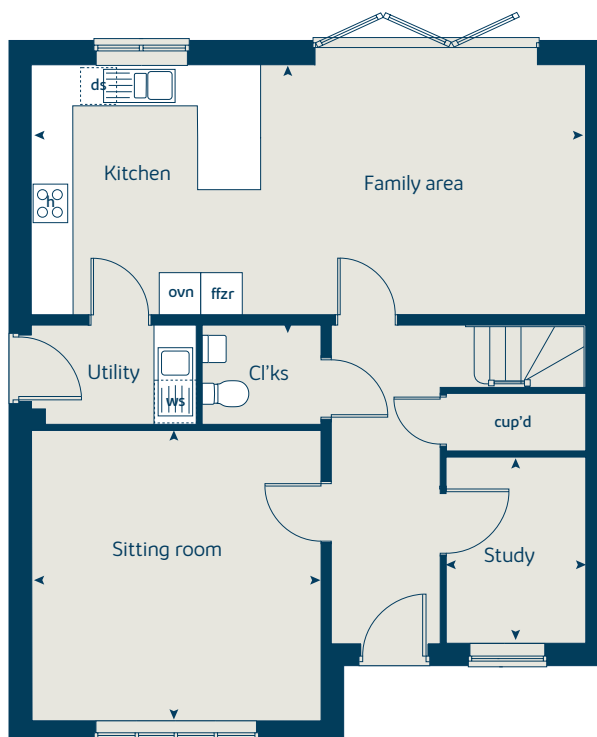
When you have finished with this leaflet please recycle it.

MOLNY GD57914 / 04.21

First floor



Ground floor





The Maple

4 bedroom home

bovishomes.co.uk

**Bovis
Homes** 

The Maple

4 bedroom home

Ground floor	metres	feet / inches
Kitchen	3.55 x 3.50	11' 6" x 11' 5"
Family / dining area	7.29 x 3.13	23' 11" x 10' 3"
Sitting room	4.50 x 3.50	14' 9" x 11' 5"
Study	2.50 x 2.29	8' 2" x 7' 6"

First floor

Bedroom 1	3.60 x 3.55	11' 10" x 11' 8"
Bedroom 2	3.71 x 3.60	12' 2" x 11' 10"
Bedroom 3	4.18 x 2.90	13' 9" x 9' 6"
Bedroom 4	2.90 x 2.90	9' 6" x 9' 6"

The Maple | X416 01 MOLNY |

This floorplan has been produced for illustrative purposes only. Room sizes shown are between arrow points as indicated on plan. The dimensions have tolerances of + or -50mm and should not be used other than for general guidance. If specific dimensions are required, enquiries should be made to the sales consultant.

* Window is fixed shut to plot 23 only. Please see sales consultant for further details.

** Window omitted to plot 23 only. Please see sales consultant for further details.

ovn	oven	cyl	hot water cylinder
h	hob	w	wardrobe
dw	dishwasher	cup'd	cupboard
ws	washing machine space	◀ ▶	measuring points
ffzr	fridge freezer		

Please refer to the sales consultant for specific plot details as the illustrations shown are computer generated impressions of how the property may look so are indicative only. External details or finishes may vary on individual plots and homes may be built in either detached or attached styles depending on the development layout. Exact specifications, window styles and whether a property is left or right handed may differ from plot to plot.

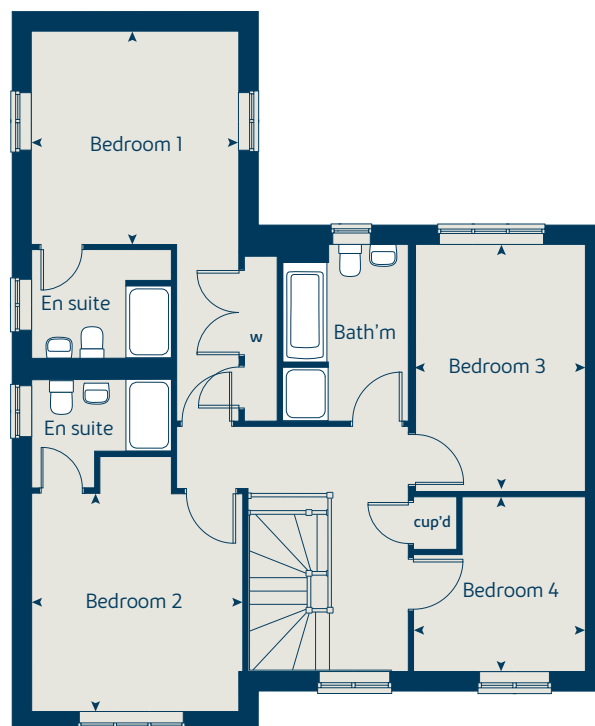
The floorplans shown are not to scale. Measurements are based on the original drawings. Slight variations may occur during construction.

Produced by the Vistry Group Design Studio.

When you have finished with this leaflet please recycle it.

MOLNY GD57914 / 04.21

First floor



Ground floor





The Birch

5 bedroom home

bovishomes.co.uk

**Bovis
Homes** 

The Birch

5 bedroom home

Ground floor	metres	feet / inches
Kitchen	4.54 x 3.10	14' 11" x 10' 2"
Family / dining area	6.07 x 3.52	19' 11" x 11' 7"
Sitting room	4.17 x 3.61	13' 8" x 11' 10"
Study / dining room	3.41 x 3.00	11' 2" x 9' 10"

First floor

Bedroom 1	3.62 x 3.51	11' 10" x 11' 6"
Bedroom 2	3.92 x 2.90	12' 9" x 9' 6"
Bedroom 3	3.06 x 2.82	10' 0" x 9' 3"
Bedroom 4	2.98 x 2.83	9' 9" x 9' 3"
Bedroom 5	3.00 x 2.83	9' 10" x 9' 3"

The Birch | X518 (IF) 01 MOLNY |

This floorplan has been produced for illustrative purposes only. Room sizes shown are between arrow points as indicated on plan. The dimensions have tolerances of + or -50mm and should not be used other than for general guidance. If specific dimensions are required, enquiries should be made to the sales consultant.

* Window is openable to plot 97 only. Please see sales consultant for further details.

ovn	oven	ldr	larder
h	hob	cyl	hot water cylinder
dw	dishwasher	w	wardrobe
ws	washing machine space	cup'd	cupboard
ffzr	fridge freezer	◀ ▶	measuring points

Please refer to the sales consultant for specific plot details as the illustrations shown are computer generated impressions of how the property may look so are indicative only. External details or finishes may vary on individual plots and homes may be built in either detached or attached styles depending on the development layout. Exact specifications, window styles and whether a property is left or right handed may differ from plot to plot.

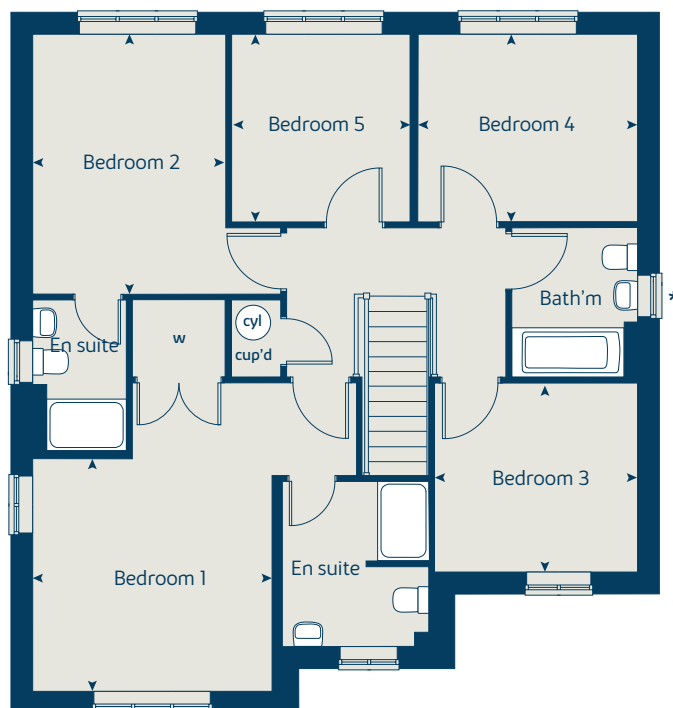
The floorplans shown are not to scale. Measurements are based on the original drawings. Slight variations may occur during construction.

Produced by the Vistry Group Design Studio.

When you have finished with this leaflet please recycle it.

MOLNY GD57914 / 04.21

First floor



Ground floor





The Lime

5 bedroom home

bovishomes.co.uk

**Bovis
Homes** 

The Lime

5 bedroom home

Ground floor	metres	feet / inches
Kitchen / family / dining area	7.71 x 4.24	25' 4" x 13' 11"
Sitting room	5.39 x 3.86	17' 8" x 12' 7"
Dining room	3.86 x 2.78	12' 7" x 9' 1"
Study	3.58 x 2.55	11' 8" x 8' 4"

First floor	metres	feet / inches
Bedroom 1	4.05 x 3.76	13' 3" x 12' 3"
Bedroom 2	4.05 x 3.52	13' 3" x 11' 6"
Bedroom 3	3.26 x 3.24	10' 7" x 10' 6"
Bedroom 4	3.55 x 2.26	11' 7" x 7' 4"
Bedroom 5	2.83 x 2.64	9' 3" x 8' 7"

The Lime | X520 (IF) 01 MOLNY |

This floorplan has been produced for illustrative purposes only. Room sizes shown are between arrow points as indicated on plan. The dimensions have tolerances of + or -50mm and should not be used other than for general guidance. If specific dimensions required, enquiries should be made to the sales consultant.

* Window omitted to plot 26 only. Please see sales consultant for further details.

** Window omitted to plots 24 and 114 only. Please see sales consultant for further details.

ovn	oven	cyl	hot water cylinder
h	hob	w	wardrobe
dw	dishwasher	cup'd	cupboard
ws	washing machine space	◀ ▶	measuring points
ffzr	fridge freezer		

Please refer to the sales consultant for specific plot details as the illustrations shown are computer generated impressions of how the property may look so are indicative only. External details or finishes may vary on individual plots and homes may be built in either detached or attached styles depending on the development layout. Exact specifications, window styles and whether a property is left or right handed may differ from plot to plot.

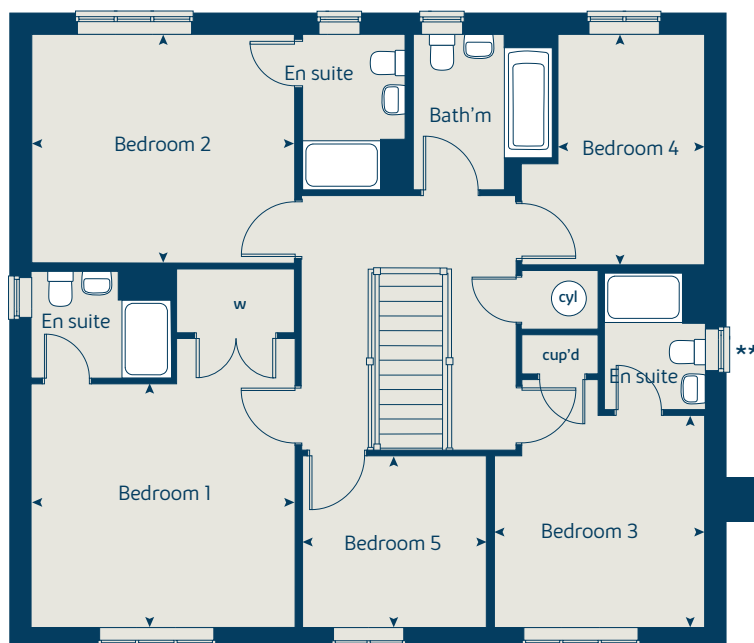
The floorplans shown are not to scale. Measurements are based on the original drawings. Slight variations may occur during construction.

Produced by the Vistry Group Design Studio.

When you have finished with this leaflet please recycle it.

MOLNY GD57914 / 04.21

First floor



Ground floor





Yardley Manor

Olney

A taste of local life

bovishomes.co.uk

**Bovis
Homes** 



Welcome to Yardley Manor

This exciting new development is on the edge of the pretty, Buckinghamshire market town of Olney, on the banks of the River Great Ouse and within easy reach of Milton Keynes, Bedford and Northampton.

Our range of brand new homes is designed to embrace contemporary living with popular features such as open-plan living, stylish fitted kitchens, bi-fold doors and master bedrooms with en suite.

So, if you're looking for a stunning new home in a charming market town with great transport links, your search ends here!

Taking time out

You'll find colourful weekly markets and a monthly farmer's market in its town centre and its riverside Recreation Ground is used for sports, leisure and has a children's play area. At nearby Emberton Country Park, enjoy 200 acres with scenic lakes, trails, and children's play areas

Education

Within 5 minutes' drive of Yardley Manor, you'll find a range of schools and nurseries for all ages. For little ones there is Olney Pre-School, based in The Olney Centre and Olney Nursery at the Church Hall. Olney Infant Academy for 4 to 7 year olds, is less than 2 miles from Yardley Manor and runs breakfast and after school clubs.

Olney Middle School, for children aged 7 to 11, is a 10 minute walk, less than half a mile. For senior pupils Ousedale School Olney campus, takes students aged 11 to 16, and its campus at Newport Pagnell, 9 miles away, has a Sixth Form Centre for pupils aged 16 to 19.

Getting around

Olney is in a great location for commuters, with the A509 linking it to Milton Keynes, 13 miles away. The A428 also connects the town to Northampton, 11 miles and Bedford 13 miles. You can join the M1 at Junction 14, 8 miles away, for London, the East Midlands and the north. Trains journeys to London Euston from Wolverton train station, 10 miles away and from Milton Keynes Central, take less than an hour. From Bedford, trains also run to London St Pancras, London Bridge and Gatwick Airport. For air travel, Luton Airport is a 31-mile trip and Heathrow 61 miles.

A trip to the shops

This historic market town is home to a range of independent shops, supermarkets and convenience stores, as well as a post office, bakery, cafes, pubs, restaurants, schools and sports and leisure facilities.



Yardley Manor

Yardley Road, Olney

Buckinghamshire MK46 5ED

From the M1 and Milton Keynes

- Take Junction 14 and follow the signs to Newport Pagnell A509
- In 1.2 miles take the 3rd exit and then 2nd exit at the double roundabout
- Continue straight for 5.7 miles
- At the next roundabout turn left onto Drift Way
- At the next roundabout turn right
- In 280 yards turn left and Bovis Homes at Yardley Manor can be found on the right hand side



MIX
Paper from
responsible sources
FSC® C014177

When you have finished with this leaflet please recycle it.

The streetscenes have been produced for illustrative purposes only, please check the details of the homes you are interested in with the sales consultant.

Bovis Homes Limited, Northern Home Counties region
Building 7, Caldecotte Lake Business Park, Milton Keynes, Buckinghamshire MK7 8JU. Telephone: 01908 088 500

Produced by the Vistry Group Design Studio.

MOLNY GD57914 / 03.21

