

bear

Estate Agents



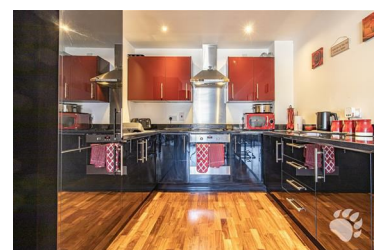
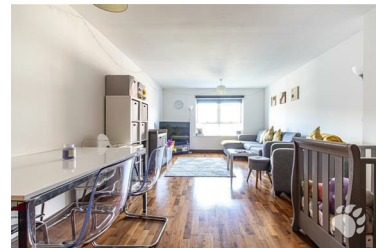
Cherrydown East, Basildon

£175,000



Bear Estate Agents are understandably pleased to bring to the market this desirable and well cared for ONE bedroom 6th floor apartment. This charming one-bedroom apartment is an excellent opportunity for first-time buyers entering the property market or for buy-to-let investors aiming to expand their portfolio.

- 6th Floor Apartment
- Entrance Hall
- Kitchen (11'4 x 8'11)
- Bedroom (9'4 x 10'6)
- Large Storage Cupboard
- Lift Access to All Floors
- Living Room (17'7 x 12'4)
- WC
- Three-Piece En-Suite (7'2 x 6'1)
- Allocated Parking Space



351 Clay Hill Road, Basildon, Essex, SS16 4HA

Office: 01268 661215 basildon@bearestateagents.co.uk <http://www.bearestateagents.co.uk/>