

bear

Estate Agents



Jazz Lane, Basildon

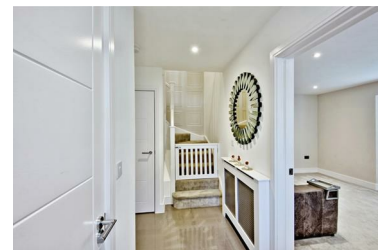
Price Guide £425,000



Guide price £425,000 - £450,000 Step into modern comfort with this exquisite three-bedroom semi-detached home, constructed in 2020 and benefitting from approximately six years of building warranty. The ground floor welcomes you with an inviting entrance hall, a convenient downstairs W/C, and a spacious lounge featuring dual aspect windows that flood the room with natural light. The heart of the home is the modern fitted kitchen/diner, adorned with contemporary finishes and French doors leading to the landscaped, south-facing rear garden. This property offers a harmonious blend of stylish design and practical living spaces.

Located in the desirable Gardeners Park Village Development, this home is a stone's throw away from the vibrant Mayflower Retail Park, providing a variety of shops and restaurants. The excellent transport links, including easy access to Basildon train station and the A127, ensure swift connections to London and beyond, making this an ideal location for both relaxation and convenience.

- New Home in 2020
- Modern Kitchen/Diner
- Three Great Size Bedrooms all with Fitted Wardrobes
- Bespoke Made to Measure Shutters Throughout
- South Facing Rear Garden
- Approximately 6 Years Remaining Warranty
- Instant Hot Water Tap to Kitchen
- Downstairs WC
- Allocated Parking for Two Vehicles with Additional Space to Front
- Stones Throw to Mayflower Retail Park



351 Clay Hill Road, Basildon, Essex, SS16 4HA

Office: 01268 661215 basildon@bearestateagents.co.uk <http://www.bearestateagents.co.uk/>