

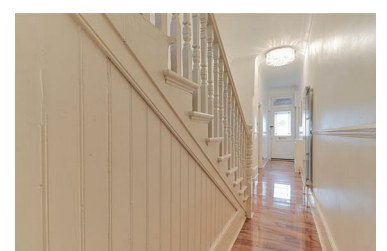
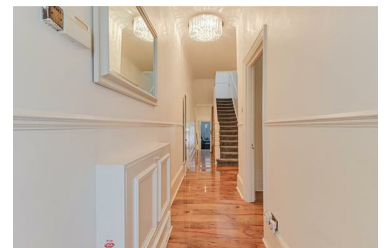


South Street, Romford
Guide Price £650,000



Bear Estate Agents are understandably enthused to bring to the market this stunning FOUR bedroom semi-detached 'Victorian' style family home in a prime location close to Romford Town Centre and rail links direct into London. Having been extended to the rear this home can now boast in excess of 2,000 sq ft of living accommodation spread over three floors to provide an absolute wealth of living space perfect for growing and already large families...

- Striking & Spacious Entrance Hall
- Utility Room 9'11 x 8'11 Alongside Ground Floor Shower Room 6'11 x 2'9
- Spacious Landing Split Over A Number Of Split Levels A Fine Feature In Itself
- Family Bathroom Suite 12'4 x 4'3
- Living Room 14'3 x 12'1 With Adjoining Play Room 9'10 x 9'4
- Stunning Open Plan Kitchen, Living & Dining Area Complete With Feature Island & Underfloor Heating 26'1 x 14'10 Max
- Master Bedroom 15'5 x 12'1 With En Suite Shower Room 10'2 x 6', Bedroom Two 13'4 x 11'4, Bedroom Three 13'1 x 11'10 Plus Bedroom Four 10'2 x 5'7
- South Facing Rear Garden Complete With Summer House 13'10 x 12'5



Suite 19 Cornwallis Business Centre, Cornwallis House, Howa, Basildon, Essex, SS14 3BB

Office: 01268 661215 info@bearestateagents.co.uk <http://www.bearestateagents.co.uk/>