



## Russell Hill Road

Purley, CR8 2LE

**£1,800 Per month**

TOWN CENTRE. A large three/four bedroom apartment is available to rent in the centre of Purley. Newly refurbished with modern fittings, this flat is conveniently located within walking distance of Purley train station as well as shops and eateries.

- \* Newly refurbished
- \* Plentiful space
- \* In town centre
- \* Close to train station
- \* Tax Band C

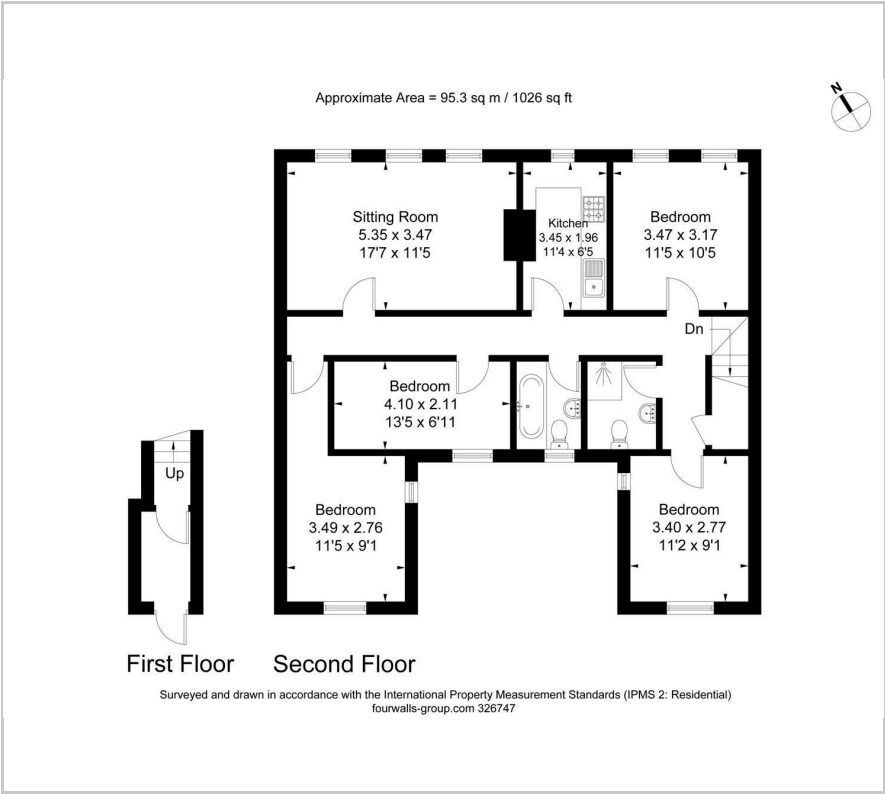
### Viewing

Please contact our Birdhouse Surrey Office on 02087737730 if you wish to arrange a viewing appointment for this property or require further information.





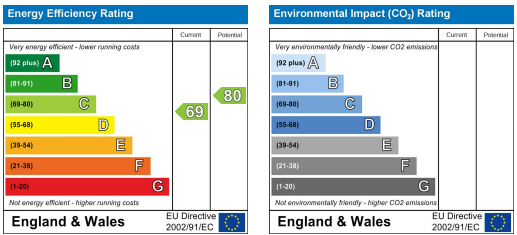
Floor Plan



Area Map



Energy Efficiency Graph



These particulars, whilst believed to be accurate are set out as a general outline only for guidance and do not constitute any part of an offer or contract. Intending purchasers should not rely on them as statements of representation of fact, but must satisfy themselves by inspection or otherwise as to their accuracy. No person in this firms employment has the authority to make or give any representation or warranty in respect of the property.