



## Sovereign House

Purley, CR8 2LJ

**£1,750 Per month**

BRAND NEW DEVELOPMENT. Birdhouse Surrey are delighted to introduce Sovereign House, a brand new development in Purley. This two-bedroom, second-floor apartment features a spacious living area, with a balcony and close proximity to the town centre.

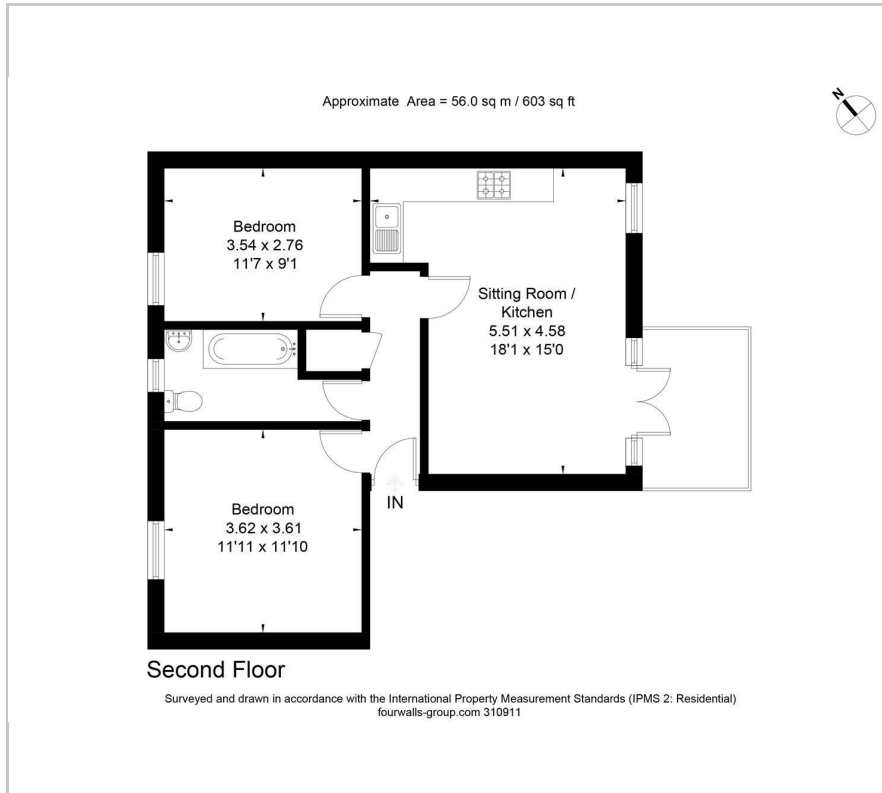
- \* Brand new development
- \* Two bedrooms
- \* Balcony
- \* Spacious living area
- \* Close to Purley town centre
- \* Inclusive of Council Tax

### Viewing

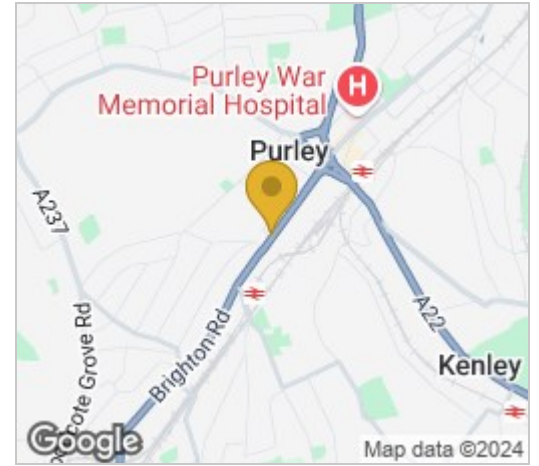
Please contact our Birdhouse Surrey Office on 02087737730 if you wish to arrange a viewing appointment for this property or require further information.



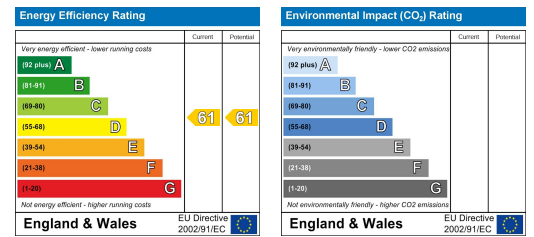
# Floor Plan



# Area Map



# Energy Efficiency Graph



These particulars, whilst believed to be accurate are set out as a general outline only for guidance and do not constitute any part of an offer or contract. Intending purchasers should not rely on them as statements of representation of fact, but must satisfy themselves by inspection or otherwise as to their accuracy. No person in this firm's employment has the authority to make or give any representation or warranty in respect of the property.