



FERNLEIGH
PARK



bovishomes.co.uk



Our name has been synonymous with building since 1885, when Charles William Bovis bought a construction company in the London Borough of Marylebone and changed its name to CW Bovis & Co.

From those foundations has grown a Bovis heritage to be proud of, including quality homes and communities across Britain.



Welcome to Fernleigh Park

Fernleigh Park is a visionary new garden village community set in 52 acres at the former RAF Long Marston airfield in the heart of the Warwickshire countryside less than 6 miles south-west of Stratford-upon-Avon.

Our stunning development of brand new two to five bedroom homes will also offer beautiful green open spaces and outdoor amenities including nature trails, allotments, a community orchard, woods and play parks.





A taste of local life

Fernleigh Park is ideally located for work, rest and play. From its picturesque surroundings, local village amenities or proximity to Stratford-upon-Avon - you couldn't choose a more perfect location.



Getting around

Fernleigh Park is located on the desirable south side of Stratford-upon-Avon. 6 miles will take you directly to the centre of the historic town. Fernleigh Park's ideal location means that Evesham is less than 14 miles away and the picturesque Cotswolds is within easy access. Stratford-upon-Avon station runs regular trains directly into London Marylebone taking around 2 hours. Alternatively, a short drive to Moreton-in-Marsh will mean you can take a train that will get you into the City in less than an hour and a half. Heading north, the train from Stratford-upon-Avon takes about 45 mins to Birmingham Moor Street.

Education

Long Marston has its own primary school for children from reception to year six. For senior pupils there are many highly commended state and independent schools for children of all ages in and around Stratford-upon-Avon and the surrounding area.

Taking time out

With Meon Vale and Long Marston each having a convenience store for essentials, about five miles away in Stratford-upon-Avon you'll find a large Waitrose, Tesco Superstore and Morrison's for weekly grocery shopping.

Stratford-upon-Avon town centre offers a great mix of shops for everyone, from unique independents and designer boutiques to national retailers at the Maybird Shopping Park. There are also farmers markets which are held twice a month, presenting a wide selection of local Warwickshire produce. Stratford also boasts many pubs and bars plus Michelin star restaurants and, of course, theatres.

At weekends, you'll discover many things to do nearby to keep the whole family entertained. Explore the countryside or visit one of the many historic landmarks, stately homes and National Trust properties on your door step.

Meon Vale Leisure Centre is less than 1.5 miles from Fernleigh Park. This includes a well-equipped gym, and racquet sports facilities. While there is also a Bannatyne Health Club and Spa situated in Stratford-upon-Avon.



This image is a computer generated illustration of the entrance to Fernleigh Park.
 Please note that this streetscene shown has been produced for illustrative purposes only.
 Please check the details of the homes you are interested in with the sales consultant.

Masterplan

- 1 Bovis Homes development
- 2 Development by others
- 3 Future development
- 4 Proposed sports pavilion
- 5 Community hub
- 6 Sports pitches
- 7 Allotments



Development layout

Fernleigh Park boasts a stunning range of two to five bedroom homes each with unique views and aspects. Discover your dream home today.



The Hawthorn
2 bedroom home



The Rowan
3 bedroom home



The Spruce
3 bedroom home



The Cypress
3 bedroom home



The Beech
3 bedroom home



The Chestnut
4 bedroom home



The Aspen
4 bedroom home



The Ash
4 bedroom home



The Fern
4 bedroom home
(plus study)



The Yew SE
(special edition)
4 bedroom home



The Birch
5 bedroom home



The Lime SE
(special edition)
5 bedroom home

□ Affordable housing

- bcp bin collection point
- bs bin store
- cs cycle store
- v visitor parking
- bollard



The Lime SE Special Edition

5 bedroom home

Floor area
188 sq. m 2026 sq. ft

Ground floor	metres	feet / inches
Kitchen / family / dining area	7.69 x 4.24	25' 3" x 13' 11"
Sitting room	5.39 x 3.86	17' 8" x 12' 8"
Dining room	3.86 x 2.78	12' 8" x 9' 1"
Study	3.59 x 2.55	11' 9" x 8' 4"

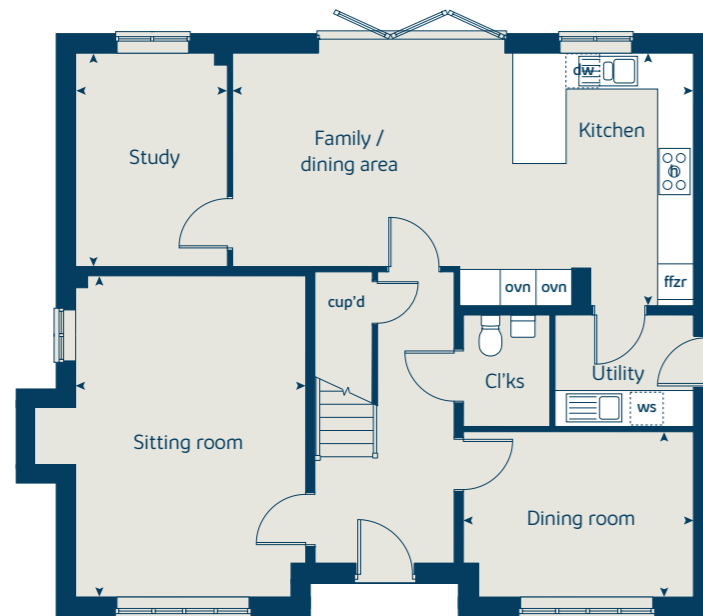
First floor	metres	feet / inches
Bedroom 1	3.75 x 3.61	12' 4" x 11' 10"
Bedroom 2	4.05 x 3.52	13' 3" x 11' 7"
Bedroom 3	3.61 x 3.27	11' 10" x 10' 9"
Bedroom 4	3.55 x 2.25	11' 8" x 7' 4"
Bedroom 5	2.94 x 2.08	9' 8" x 6' 10"

The Lime | X520v3 CMARS |

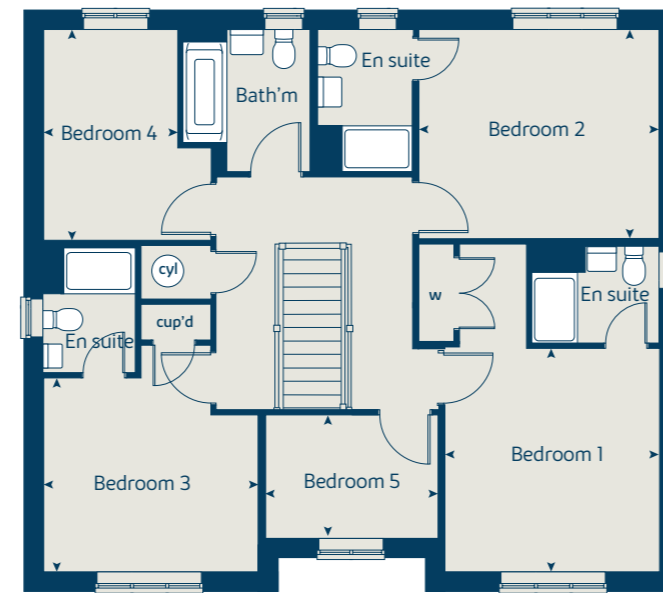
This floorplan has been produced for illustrative purposes only. Room sizes shown are between arrow points as indicated on plan. The dimensions have tolerances of + or -50mm and should not be used other than for general guidance. If specific dimensions are required, enquiries should be made to the sales consultant.

ovn	oven	cyl	hot water cylinder
h	hob	w	wardrobe
dw	dishwasher	cup'd	cupboard
ws	washing machine space	< >	measuring points
ffzr	fridge freezer		

Ground floor



First floor



Please note that The Lime SE is a variant to the standard Lime home.

Please refer to the sales consultant for specific plot details as the illustrations shown are computer generated impressions of how the property may look so are indicative only. External details or finishes may vary on individual plots and homes may be built in either detached or attached styles depending on the development layout. Exact specifications, window styles and whether a property is left or right handed may differ from plot to plot. The floorplans shown are not to scale. Measurements are based on the original drawings. Slight variations may occur during construction.



The Birch

5 bedroom home

Floor area
166 sq. m 1786 sq. ft

Ground floor	metres	feet / inches
Kitchen / family / dining area	9.13 x 3.52	29' 11" x 11' 7"
Sitting room	4.30 x 3.62	14' 1" x 11' 10"
Study / dining room	3.39 x 3.00	11' 1" x 9' 10"

First floor	metres	feet / inches
Bedroom 1	4.66 x 3.51	15' 3" x 11' 6"
Bedroom 2	3.92 x 2.91	12' 10" x 9' 7"
Bedroom 3	3.06 x 2.75	10' 1" x 9' 0"
Bedroom 4	3.31 x 2.83	10' 10" x 9' 3"
Bedroom 5	2.83 x 2.69	9' 3" x 8' 10"

The Birch | X518 01 CMARS |
This floorplan has been produced for illustrative purposes only. Room sizes shown are between arrow points as indicated on plan. The dimensions have tolerances of + or -50mm and should not be used other than for general guidance. If specific dimensions are required, enquiries should be made to the sales consultant.

ovn	oven	cyl	hot water cylinder
h	hob	w	wardrobe
dw	dishwasher	cup'd	cupboard
ws	washing machine space	< >	measuring points
ffzr	fridge freezer		

Ground floor



First floor



Please note that the stone finish applies to plots 53 and 56 only, others vary. Please see sales consultant for further details.

Please refer to the sales consultant for specific plot details as the illustrations shown are computer generated impressions of how the property may look so are indicative only. External details or finishes may vary on individual plots and homes may be built in either detached or attached styles depending on the development layout. Exact specifications, window styles and whether a property is left or right handed may differ from plot to plot. The floorplans shown are not to scale. Measurements are based on the original drawings. Slight variations may occur during construction.



The Yew SE Special Edition

4 bedroom home

Floor area
177 sq. m 1905 sq. ft

Ground floor	metres	feet / inches
Kitchen / dining area	8.44 x 3.42	27' 9" x 11' 3"
Sitting room	4.69 x 3.18	15' 5" x 10' 5"
Study	3.18 x 1.76	10' 5" x 5' 9"

First floor	metres	feet / inches
Bedroom 1	4.18 x 3.73	13' 9" x 12' 3"
Bedroom 3	4.20 x 3.23	13' 9" x 10' 7"

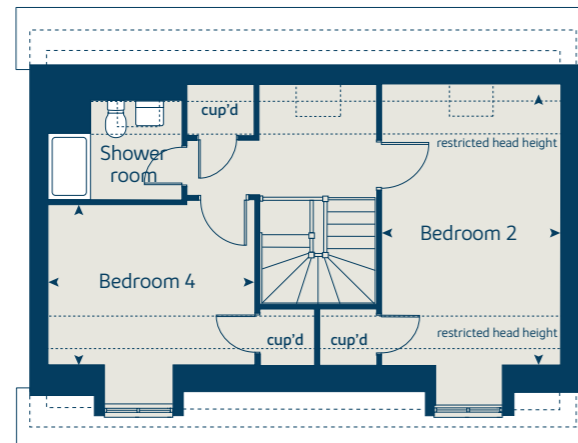
Second floor	metres	feet / inches
Bedroom 2	5.04 x 3.23	16' 7" x 10' 7"
Bedroom 4	3.73 x 2.86	12' 3" x 9' 5"

The Yew | X519 CMARS |

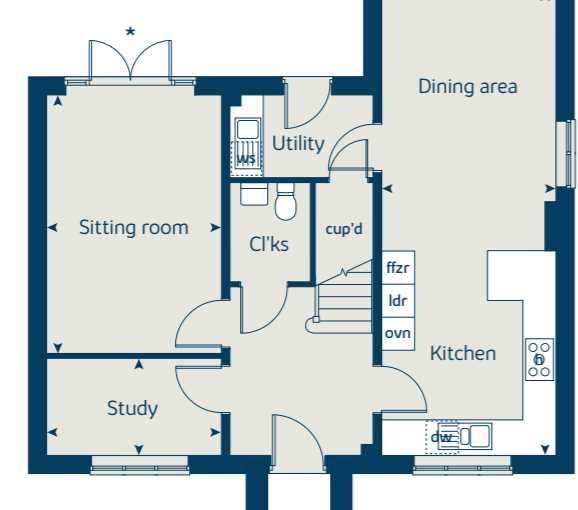
This floorplan has been produced for illustrative purposes only. Room sizes shown are between arrow points as indicated on plan. The dimensions have tolerances of + or -50mm and should not be used other than for general guidance. If specific dimensions are required, enquiries should be made to the sales consultant.

ovn	oven	cup'd	cupboard
h	hob	w	wardrobe
ws	washing machine space	ldr	larder
dw	dishwasher	cyl	hot water cylinder
ffzr	fridge freezer	◀ ▶	measuring points

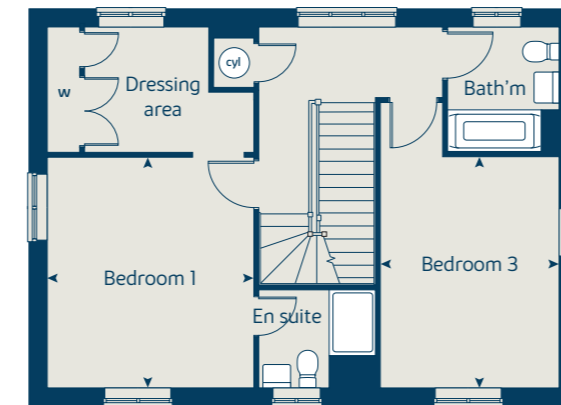
Second floor



Ground floor



First floor



Please note that the Yew SE is a 4 bedroom variant of the standard Yew home.

* Door applies to plots 58, 113, 116 and 132. Please see sales consultant for further details.

Please note that an additional sitting room window applies to plots 58 and 71 only. Please see sales consultant for further details.

Please refer to the sales consultant for specific plot details as the illustrations shown are computer generated impressions of how the property may look so are indicative only. External details or finishes may vary on individual plots and homes may be built in either detached or attached styles depending on the development layout. Exact specifications, window styles and whether a property is left or right handed may differ from plot to plot. The floorplans shown are not to scale. Measurements are based on the original drawings. Slight variations may occur during construction.



The Fern

4 bedroom home
(plus study)

Floor area
147 sq. m 1586 sq. ft

Ground floor	metres	feet / inches
Kitchen / family area	8.00 x 3.60	26' 4" x 11' 10"
Sitting room	5.80 x 3.80	19' 1" x 12' 6"
Study	2.53 x 2.11	8' 4" x 6' 11"

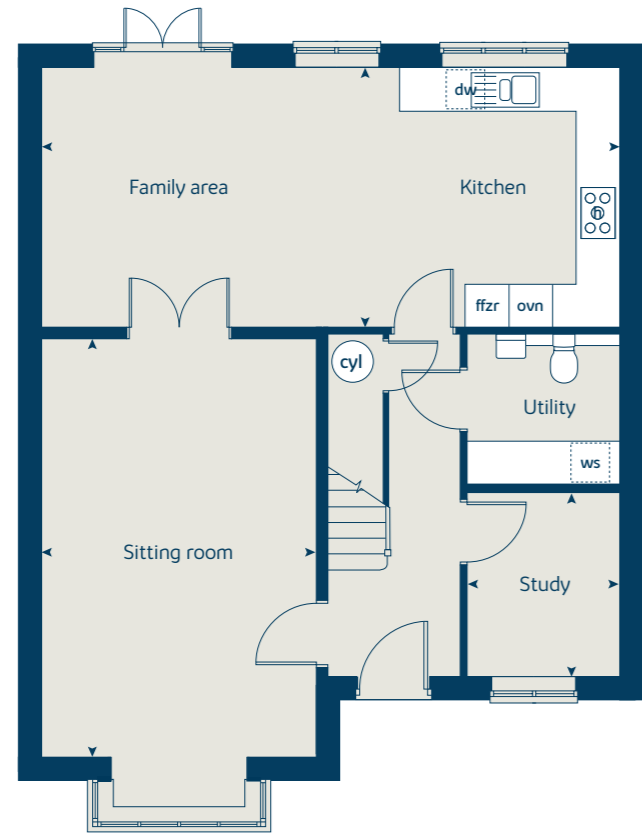
First floor	metres	feet / inches
Bedroom 1	3.80 x 3.61	12' 6" x 11' 10"
Bedroom 2	4.11 x 3.07	13' 6" x 10' 1"
Bedroom 3	3.62 x 2.65	11' 11" x 8' 8"
Bedroom 4	3.05 x 2.97	10' 0" x 9' 9"
Study	3.05 x 2.17	10' 0" x 7' 1"

The Fern | WM4508 CMARS |

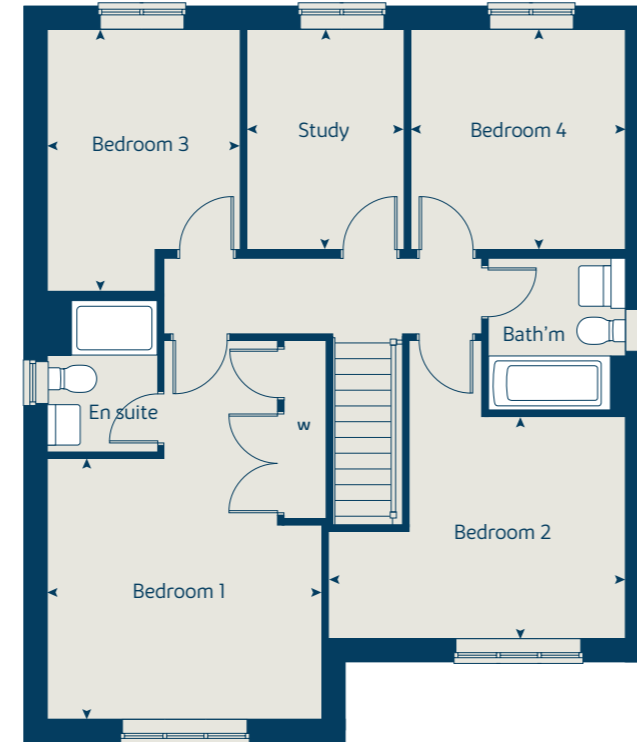
This floorplan has been produced for illustrative purposes only. Room sizes shown are between arrow points as indicated on plan. The dimensions have tolerances of + or -50mm and should not be used other than for general guidance. If specific dimensions are required, enquiries should be made to the sales consultant.

ovn	double oven	w	wardrobe
h	hob	cup'd	cupboard
dw	dishwasher	cyl	hot water cylinder
ws	washing machine space	< >	measuring points
ffzr	fridge freezer		

Ground floor



First floor



* Utility window applies to plots 42, 57, 59, 96, 97 and 108 only. Please see sales consultant for further details.

Please note that the weatherboard finish applies to plots 42 and 57 only. Please see sales consultant for further details.

Please refer to the sales consultant for specific plot details as the illustrations shown are computer generated impressions of how the property may look so are indicative only. External details or finishes may vary on individual plots and homes may be built in either detached or attached styles depending on the development layout. Exact specifications, window styles and whether a property is left or right handed may differ from plot to plot. The floorplans shown are not to scale. Measurements are based on the original drawings. Slight variations may occur during construction.



The Ash

4 bedroom home

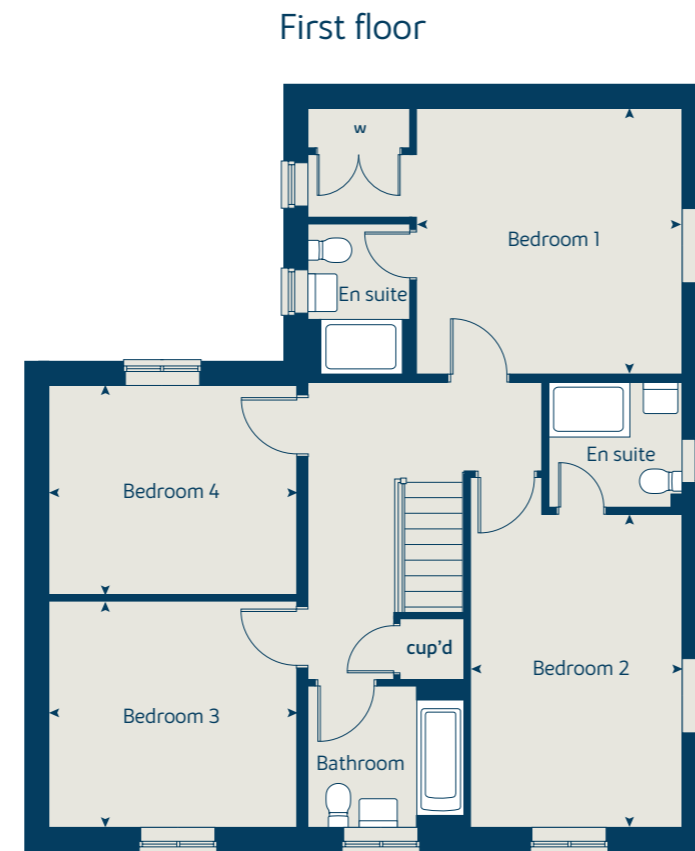
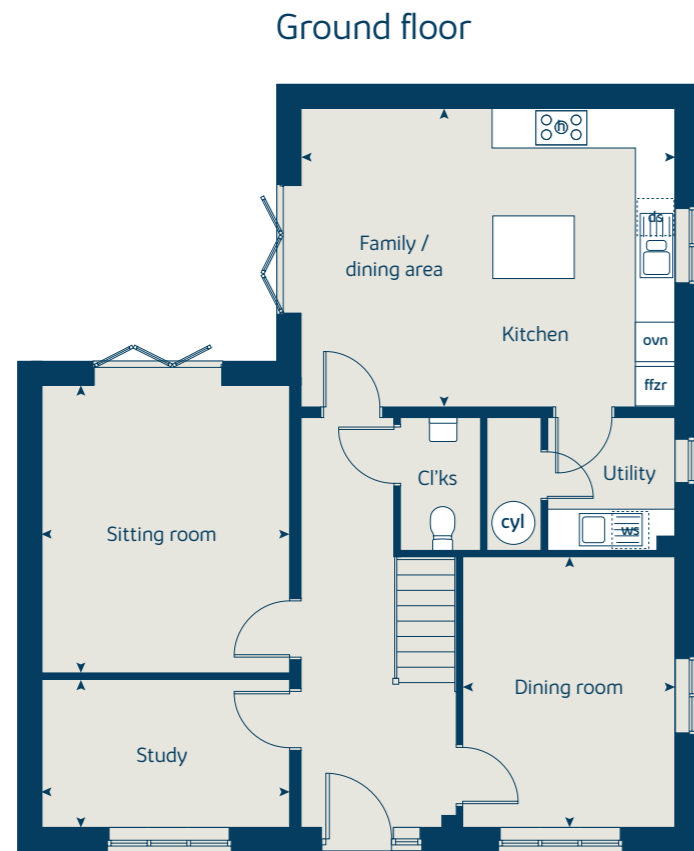
Floor area
167 sq. m 1800 sq. ft

Ground floor	metres	feet / inches
Kitchen / family / dining area	5.53 x 4.40	18' 2" x 14' 5"
Sitting room	4.25 x 3.68	14' 0" x 12' 1"
Dining room	4.00 x 3.14	13' 2" x 10' 4"
Study	3.68 x 2.20	12' 1" x 7' 3"

First floor	metres	feet / inches
Bedroom 1	3.94 x 3.92	12' 11" x 12' 10"
Bedroom 2	4.61 x 3.14	15' 2" x 10' 4"
Bedroom 3	3.67 x 3.35	12' 1" x 11' 0"
Bedroom 4	3.67 x 3.10	12' 1" x 10' 2"

The Ash | WM406 CMARS |
This floorplan has been produced for illustrative purposes only. Room sizes shown are between arrow points as indicated on plan. The dimensions have tolerances of + or -50mm and should not be used other than for general guidance. If specific dimensions are required, enquiries should be made to the sales consultant.

ovn	double oven	w	wardrobe
h	hob	cup'd	cupboard
ds	dishwasher space	cyl	hot water cylinder
ws	washing machine space	<>	measuring points
ffzr	fridge freezer		



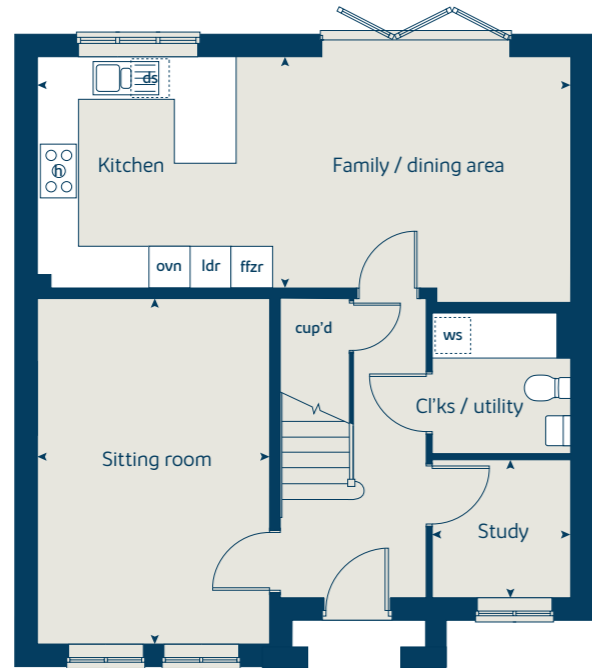
Please refer to the sales consultant for specific plot details as the illustrations shown are computer generated impressions of how the property may look so are indicative only. External details or finishes may vary on individual plots and homes may be built in either detached or attached styles depending on the development layout. Exact specifications, window styles and whether a property is left or right handed may differ from plot to plot. The floorplans shown are not to scale. Measurements are based on the original drawings. Slight variations may occur during construction.



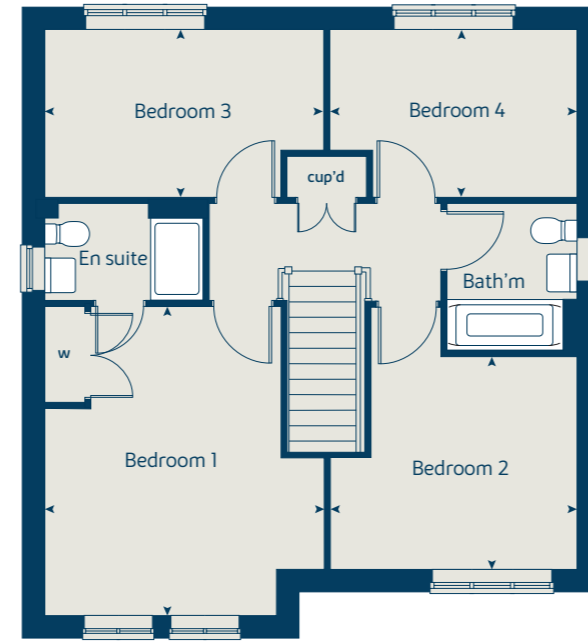
The Aspen

4 bedroom home

Ground floor



First floor



Floor area
127 sq. m 1369 sq. ft

Ground floor	metres	feet / inches
Kitchen / family / dining area	7.77 x 3.37	25' 6" x 11' 0"
Sitting room	5.04 x 3.39	16' 6" x 11' 1"
Study	2.01 x 2.01	6' 7" x 6' 7"

First floor	metres	feet / inches
Bedroom 1	4.52 x 3.82	14' 10" x 12' 6"
Bedroom 2	3.87 x 3.11	12' 8" x 10' 2"
Bedroom 3	4.07 x 2.45	13' 4" x 8' 0"
Bedroom 4	3.61 x 2.45	11' 10" x 8' 0"

The Aspen | X414 CMARS |

This floorplan has been produced for illustrative purposes only. Room sizes shown are between arrow points as indicated on plan. The dimensions have tolerances of + or -50mm and should not be used other than for general guidance. If specific dimensions are required, enquiries should be made to the sales consultant.

ovn	oven	cup'd	cupboard
h	hob	w	wardrobe
ws	washing machine space	ldr	larder
ds	dishwasher space	◀ ▶	measuring points
ffzr	fridge freezer		

* Cloakroom / utility window applies to plots 18 and 61 only. Please see sales consultant for further details.

Please refer to the sales consultant for specific plot details as the illustrations shown are computer generated impressions of how the property may look so are indicative only. External details or finishes may vary on individual plots and homes may be built in either detached or attached styles depending on the development layout. Exact specifications, window styles and whether a property is left or right handed may differ from plot to plot. The floorplans shown are not to scale. Measurements are based on the original drawings. Slight variations may occur during construction.



The Chestnut

4 bedroom home

Floor area
126 sq. m 1360 sq. ft

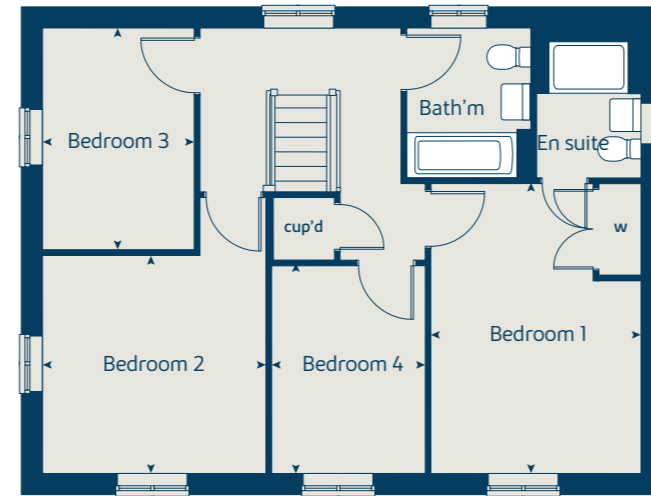
Ground floor	metres	feet / inches
Kitchen	3.91 x 3.04	12' 10" x 10' 0"
Dining / family area	4.60 x 2.97	15' 1" x 9' 9"
Sitting room	4.98 x 3.41	16' 4" x 11' 2"
Study	3.41 x 1.83	11' 2" x 5' 11"

First floor	metres	feet / inches
Bedroom 1	4.48 x 3.25	14' 8" x 10' 8"
Bedroom 2	3.44 x 3.37	11' 3" x 11' 1"
Bedroom 3	3.42 x 2.31	11' 3" x 7' 7"
Bedroom 4	3.21 x 2.35	10' 6" x 7' 9"

The Chestnut | X413 CMARS |
This floorplan has been produced for illustrative purposes only. Room sizes shown are between arrow points as indicated on plan. The dimensions have tolerances of + or -50mm and should not be used other than for general guidance. If specific dimensions are required, enquiries should be made to the sales consultant.

ovn	oven	cup'd	cupboard
h	hob	w	wardrobe
ws	washing machine space	ldr	larder
ds	dishwasher space	◀ ▶	measuring points
ffzr	fridge freezer		

First floor



Ground floor



① Alternative side elevation layout applies to plots 147 and 154 only. Please see sales consultant for further details.

* Please note that plots 8 and 154 include an additional rear door onto driveway. Please see sales consultant for further details.

Please note that the stone finish applies to plots 5, 8, 12, 15, 32, 37, 49, 66 and 102 only. Please see sales consultant for further details.

Please refer to the sales consultant for specific plot details as the illustrations shown are computer generated impressions of how the property may look so are indicative only. External details or finishes may vary on individual plots and homes may be built in either detached or attached styles depending on the development layout. Exact specifications, window styles and whether a property is left or right handed may differ from plot to plot. The floorplans shown are not to scale. Measurements are based on the original drawings. Slight variations may occur during construction.



The Beech

3 bedroom home

Floor area
106 sq. m 1146 sq. ft

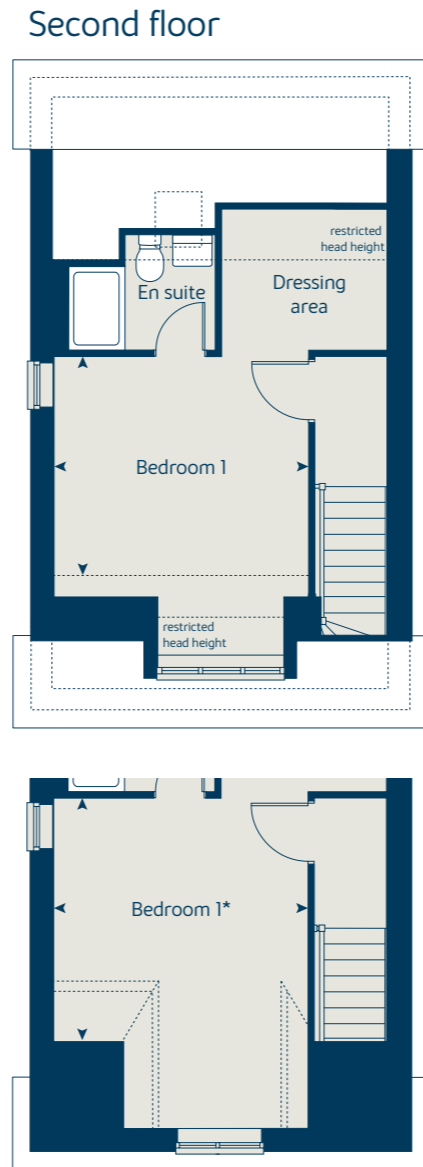
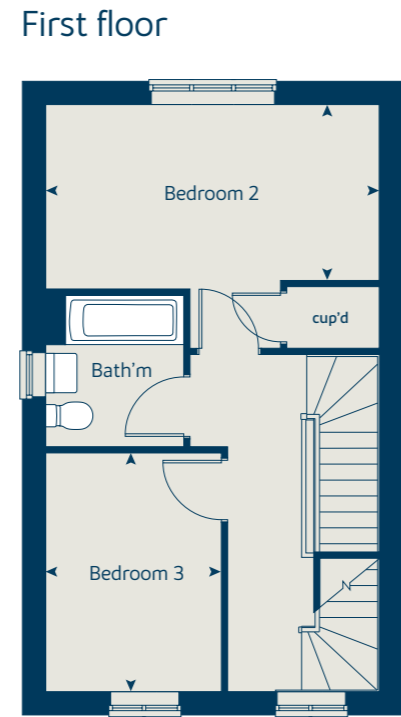
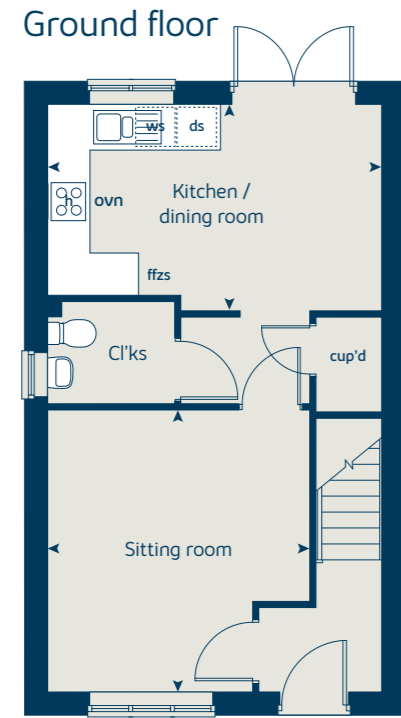
Ground floor	metres	feet / inches
Kitchen / dining room	4.74 x 2.91	15' 7" x 9' 7"
Sitting room	4.00 x 3.72	13' 2" x 12' 3"

First floor	metres	feet / inches
Bedroom 2	4.74 x 2.62	15' 7" x 8' 7"
Bedroom 3	3.39 x 2.50	11' 2" x 8' 2"

Second floor	metres	feet / inches
Bedroom 1	3.62 x 3.45	11' 11" x 11' 4"
Bedroom 1*	4.68 x 3.62	15' 4" x 11' 11"

The Beech | X309 01 CMARS |
This floorplan has been produced for illustrative purposes only. Room sizes shown are between arrow points as indicated on plan. The dimensions have tolerances of + or -50mm and should not be used other than for general guidance. If specific dimensions are required, enquiries should be made to the sales consultant.

ovn	oven	ffzs	fridge freezer space
h	hob	cup'd	cupboard
ds	dishwasher space	◀ ▶	measuring points
ws	washing machine space		



① Alternative second floor layout applies to plots 148 - 153 only. Please see sales consultant for further details.
Please refer to the sales consultant for specific plot details as the illustrations shown are computer generated impressions of how the property may look so are indicative only. External details or finishes may vary on individual plots and homes may be built in either detached or attached styles depending on the development layout. Exact specifications, window styles and whether a property is left or right handed may differ from plot to plot. The floorplans shown are not to scale. Measurements are based on the original drawings. Slight variations may occur during construction.



The Cypress

3 bedroom home

Floor area
103 sq. m 1108 sq. ft

Ground floor	metres	feet / inches
Kitchen / dining area	5.53 x 3.13	18' 2" x 10' 3"
Sitting room	4.41 x 3.40	14' 6" x 11' 2"

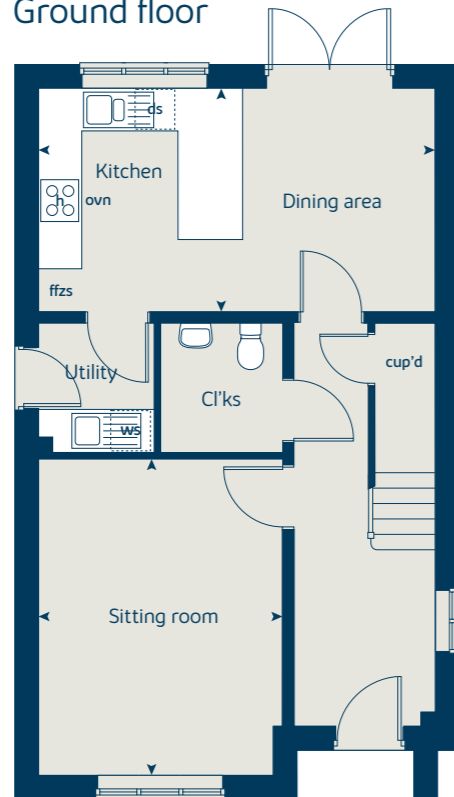
First floor	metres	feet / inches
Bedroom 1	4.10 x 3.28	13' 6" x 10' 9"
Bedroom 2	3.28 x 2.83	10' 9" x 9' 3"
Bedroom 3	3.52 x 2.16	11' 7" x 7' 1"

The Cypress | X308 (F) 01 CMARS |

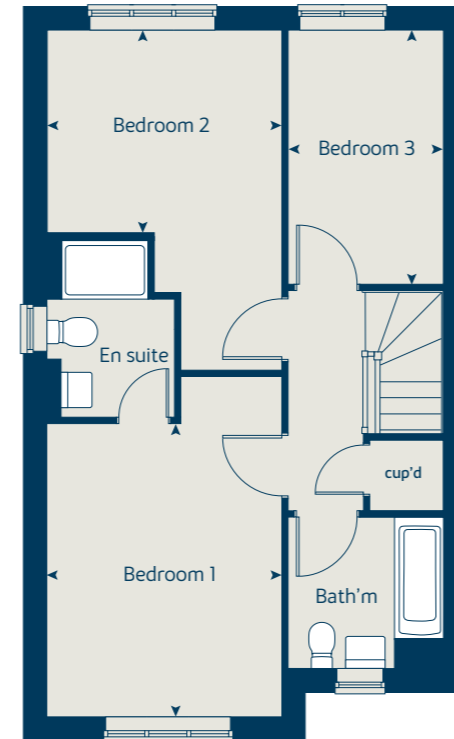
This floorplan has been produced for illustrative purposes only. Room sizes shown are between arrow points as indicated on plan. The dimensions have tolerances of + or -50mm and should not be used other than for general guidance. If specific dimensions are required, enquiries should be made to the sales consultant.

ovn	oven	ffzs	fridge freezer space
h	hob	cup'd	cupboard
ds	dishwasher space	◀ ▶	measuring points
ws	washing machine space		

Ground floor



First floor



* Window applies to plots 26, 44, 46 and 93 only. Please see sales consultant for further details.

Please note that selected plots include an additional right side elevation window. Please see sales consultant for further details.

Please refer to the sales consultant for specific plot details as the illustrations shown are computer generated impressions of how the property may look so are indicative only. External details or finishes may vary on individual plots and homes may be built in either detached or attached styles depending on the development layout. Exact specifications, window styles and whether a property is left or right handed may differ from plot to plot. The floorplans shown are not to scale. Measurements are based on the original drawings. Slight variations may occur during construction.



The Spruce

3 bedroom home

Floor area
103 sq. m 1108 sq. ft

Ground floor	metres	feet / inches
Kitchen	3.16 x 3.13	10' 5" x 10' 3"
Dining area	3.15 x 2.37	10' 4" x 7' 9"
Sitting room	5.53 x 3.32	18' 2" x 10' 11"

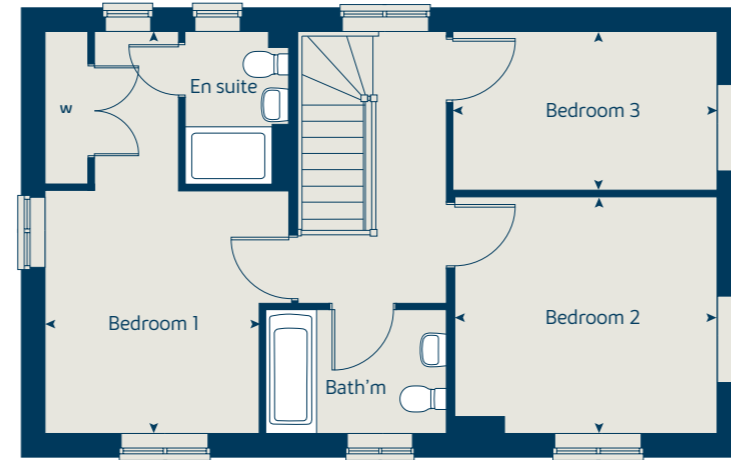
First floor	metres	feet / inches
Bedroom 1	5.53 x 2.94	18' 2" x 9' 8"
Bedroom 2	3.60 x 3.27	11' 10" x 10' 9"
Bedroom 3	3.55 x 2.17	11' 8" x 7' 2"

The Spruce | X307 (IF) 01 CMARS |

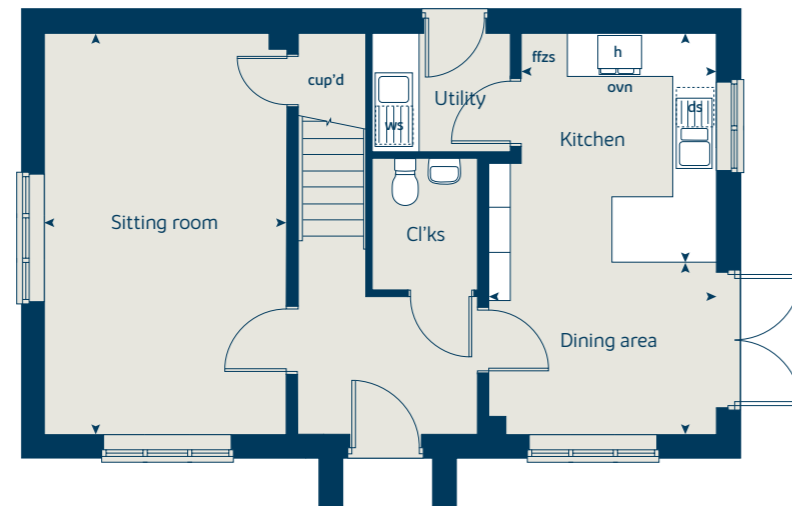
This floorplan has been produced for illustrative purposes only. Room sizes shown are between arrow points as indicated on plan. The dimensions have tolerances of + or -50mm and should not be used other than for general guidance. If specific dimensions are required, enquiries should be made to the sales consultant.

ovn	oven	ffzs	fridge freezer space
h	hob	cup'd	cupboard
ds	dishwasher space	w	wardrobe
ws	washing machine space	◀ ▶	measuring points

First floor



Ground floor



Please refer to the sales consultant for specific plot details as the illustrations shown are computer generated impressions of how the property may look so are indicative only. External details or finishes may vary on individual plots and homes may be built in either detached or attached styles depending on the development layout. Exact specifications, window styles and whether a property is left or right handed may differ from plot to plot. The floorplans shown are not to scale. Measurements are based on the original drawings. Slight variations may occur during construction.



The Rowan

3 bedroom home

Floor area
87 sq. m 932 sq. ft

Ground floor	metres	feet / inches
Kitchen	2.85 x 2.46	9' 4" x 8' 1"
Sitting / dining room	5.49 x 5.19	18' 0" x 17' 0"

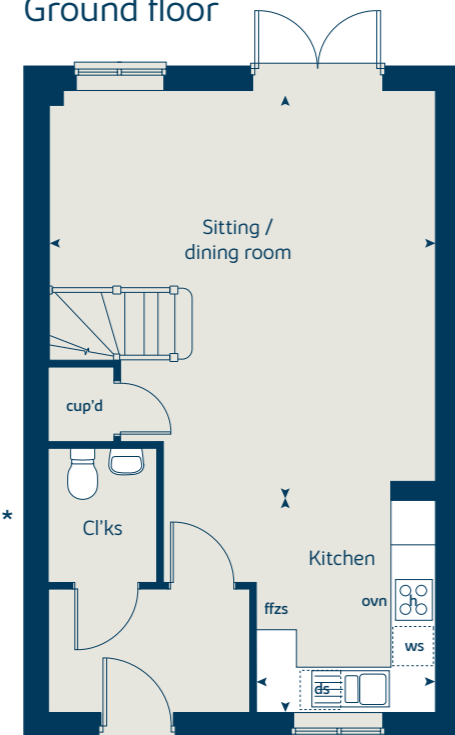
First floor	metres	feet / inches
Bedroom 1	3.69 x 3.57	12' 1" x 11' 8"
Bedroom 2	2.98 x 2.43	9' 9" x 8' 0"
Bedroom 3	3.54 x 2.13	11' 7" x 7' 0"

The Rowan | X306 01 CMARS |

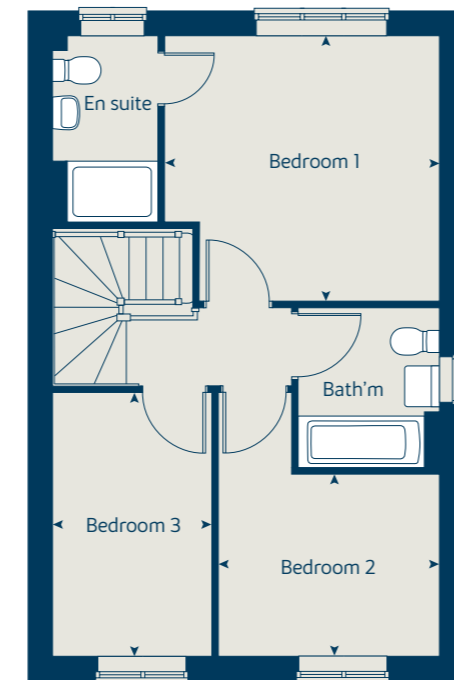
This floorplan has been produced for illustrative purposes only. Room sizes shown are between arrow points as indicated on plan. The dimensions have tolerances of + or -50mm and should not be used other than for general guidance. If specific dimensions are required, enquiries should be made to the sales consultant.

ovn	oven	ffzs	fridge freezer space
h	hob	cup'd	cupboard
ds	dishwasher space	◀ ▶	measuring points
ws	washing machine space		

Ground floor



First floor



* Please note that plots 103 and 104 include an additional side elevation cloakroom window. Please see sales consultant for further details.

Please refer to the sales consultant for specific plot details as the illustrations shown are computer generated impressions of how the property may look so are indicative only. External details or finishes may vary on individual plots and homes may be built in either detached or attached styles depending on the development layout. Exact specifications, window styles and whether a property is left or right handed may differ from plot to plot. The floorplans shown are not to scale. Measurements are based on the original drawings. Slight variations may occur during construction.



The Hawthorn

2 bedroom home

Floor area
63 sq. m 679 sq. ft

Ground floor	metres	feet / inches
Kitchen	3.78 x 2.87	12' 5" x 9' 5"
Sitting / dining area	4.07 x 4.00	13' 4" x 13' 1"

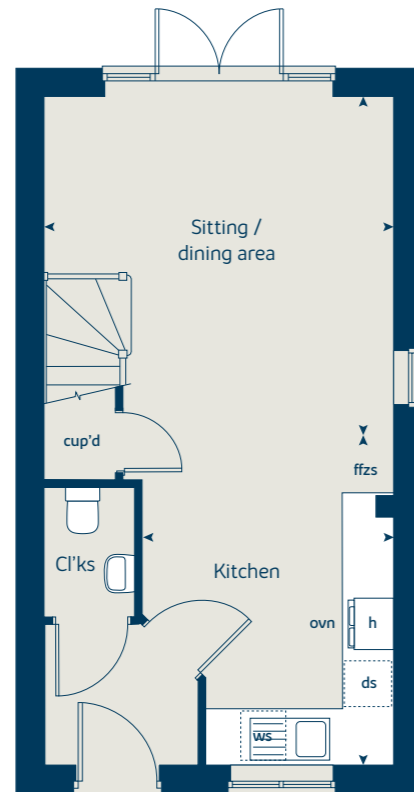
First floor	metres	feet / inches
Bedroom 1	4.11 x 2.72	13' 5" x 8' 11"
Bedroom 2	4.11 x 2.85	13' 5" x 9' 4"

The Hawthorn | X203 01 CMARS |

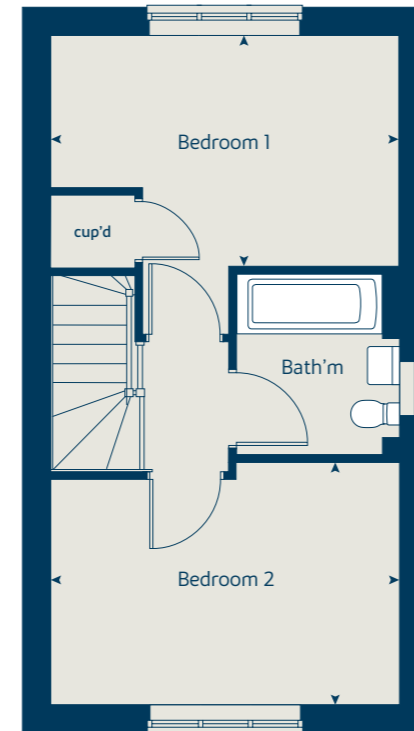
This floorplan has been produced for illustrative purposes only. Room sizes shown are between arrow points as indicated on plan. The dimensions have tolerances of + or -50mm and should not be used other than for general guidance. If specific dimensions are required, enquiries should be made to the sales consultant.

ovn	oven	ffzs	fridge freezer space
h	hob	cup'd	cupboard
ds	dishwasher space	< >	measuring points
ws	washing machine space		

Ground floor



First floor



Please refer to the sales consultant for specific plot details as the illustrations shown are computer generated impressions of how the property may look so are indicative only. External details or finishes may vary on individual plots and homes may be built in either detached or attached styles depending on the development layout. Exact specifications, window styles and whether a property is left or right handed may differ from plot to plot. The floorplans shown are not to scale. Measurements are based on the original drawings. Slight variations may occur during construction.

Unique specification

Part of the excitement of buying a new home is the thrill of being the first person to live in the property and having a brand new luxury kitchen and modern bathroom.

Our premium brand partners ensure that all of our fixtures and fittings comply with the latest Government building regulations and only branded appliances are installed in your new home.

The availability of some items is subject to the stage of build, but our sales consultants will be happy to provide guidance every step of the way.

Kitchen

2 bedroom
The Hawthorn
3 bedroom
The Rowan
The Spruce
The Cypress
The Beech
4 bedroom
The Chestnut
The Aspen
The Ash
The Fern
The Yew
5 bedroom
The Birch
The Lime

Choice of Standard fitted kitchen (doors and worktops)	■	■	■	■	■				
Choice of Premium fitted kitchen (doors and worktops)						■	■		
Stainless steel sink and drainer (single bowl) with chrome mixer tap	■								
Stainless steel sink and drainer (single and a half bowl) with chrome mixer tap		■	■	■	■	■	■	■	■
Stainless steel sink and drainer (single bowl) with chrome mixer tap in utility			■	■		■	■		
Indesit hob (60cm) with built-in single underoven, with stainless steel splashback and curved glass chimney hood	■	■	■	■	■				
Hotpoint hob (75cm) with built-in double high level oven, with glass splashback and curved glass chimney hood						■	■	■	■
Bosch (75cm) hob with built-in double oven at high level, with glass splashback and stainless steel pyramid chimney hood									■
Bosch (75cm) hob with two built-in single ovens at high level, with glass splashback and stainless steel chimney hood									■
LED under-unit flexible strip lighting									■
Fridge / freezer space	■	■	■	■	■				
Integrated (Indesit) 50/50 fridge-freezer						■	■	■	■
Space for integrated dishwasher with plumbing and electrics	■	■	■	■	■				
Integrated (Indesit) dishwasher								■	■

Space for washing machine with plumbing and electrics in utility									
Space for washing machine with plumbing and electrics in kitchen	■	■		■					
Bathrooms and en suite(s)									
Ideal Standard contemporary white Concept Air sanitary ware suite with Aqua blade WC technology	■	■	■	■	■	■	■	■	■
Studio Echo sink to cloakroom	■	■	■	■	■				
Ideal Standard low profile shower tray with glass enclosure		■	■	■	■	■	■	■	■
Handheld hair wash attachment		■	■	■	■	■	■	■	■
Shower over the bath	■								
Walk in shower in en suite to selected bedrooms							■	■	■
Choice of Standard Porcelanosa wall tiling (splashback, half-height over bath, and full-height to shower cubicle)*	■	■	■	■					
Choice of Standard Porcelanosa wall tiling (half-height to walls with fitted sanitary ware, half-height over bath, and full-height to shower cubicle)*						■	■	■	■
Choice of Premium Porcelanosa wall tiling (half-height to walls with fitted sanitary ware, half-height over bath, and full-height to shower cubicle)*								■	■
Chrome towel warmer in bathroom and en suite(s)						■	■	■	■

2 bedroom
The Hawthorn
3 bedroom
The Rowan
The Spruce
The Cypress
The Beech
4 bedroom
The Chestnut
The Aspen
The Ash
The Fern
The Yew
5 bedroom
The Birch
The Lime

Bedrooms

2 bedroom
The Hawthorn
3 bedroom
The Rowan
The Spruce
The Cypress
The Beech
4 bedroom
The Chestnut
The Aspen
The Ash
The Fern
The Yew
5 bedroom
The Birch
The Lime

Built-in wardrobe(s) to bedroom 1 (with shelf and rail)					■	■	■	■	■	■
Doors and windows										
Front door with multi-point security locking system and security chain	■	■	■	■	■	■	■	■	■	■
PVCu double glazing to windows	■	■	■	■	■	■	■	■	■	■
Double glazed PVCu French doors	■	■	■	■						
Powder coated aluminium double glazed bi-fold doors					■	■	■	■		
Internal doors to be cottage style pre-primed with chrome satin finish handles	■	■	■	■	■	■	■	■	■	■
Paving outside French / bi-fold door	■	■	■	■						

General

White painted walls and smooth white ceilings	■	■	■	■	■	■	■	■	■	■
Combined usb / double sockets in kitchen and bedroom 1	■	■	■	■	■	■	■	■	■	■
Multi-media point in living room	■	■	■	■	■	■	■	■	■	■
TV point to bedroom 1 and family room (where applicable)	■	■	■	■	■	■	■	■	■	■
Master telephone socket (plus to study where shown)	■	■	■	■	■	■	■	■	■	■
Gas central heating with wall mounted combi-boiler, programme selector and room thermostat(s)	■	■	■	■	■	■	■	■	■	■
Gas central heating with wall mounted boiler and separate hot water cylinder, programme selector and room thermostat(s)							■	■	■	■
Thermostatic valves to all radiators (with the exception of rooms with separate thermostat control)	■	■	■	■	■	■	■	■	■	■
Fitted external tap	■	■	■	■	■	■	■	■	■	■
External light fitted to front porch and wiring for external light to rear door	■	■	■	■	■	■	■	■	■	■
Mains wired smoke detectors with battery back-up	■	■	■	■	■	■	■	■	■	■
Battery powered Carbon Monoxide detector (wall mounted) to be provided for each floor	■	■	■	■	■	■	■	■	■	■
Power and lighting to 'on plot' garage (where applicable)	■	■	■	■	■	■	■	■	■	■
7 kW car charging point									■	■
3.6 kW car charging point**									■	■
Landscaped front gardens	■	■	■	■	■	■	■	■	■	■
Warranties										
NHBC Buildmark cover	■	■	■	■	■	■	■	■	■	■
First two years' customer service support from Bovis Homes	■	■	■	■	■	■	■	■	■	■

■ Fitted as standard - included in the property

* Subject to stage of construction

** Feature excluded to plots 2, 3, 51, 71 and 73



The specification shown in this leaflet is correct at the time of going to press. Bovis Homes is continually reviewing and updating the specification on all housetypes and therefore reserves the right to change specification details. Photographs depict a typical Bovis Homes interior and may include optional upgrades. For full details regarding current specification and finishes, for the plots you are interested in, please refer to our sales consultant.



Enhance and personalise your new home with upgrades and extras from our **Select** range

On top of the unique specification at Fernleigh Park, you can also use the Bovis Homes Select brochure to add even more finishing touches to your property and personalise your new home even more.

From upgrading your bathrooms with stunning ceramics, or adding smooth sliding wardrobes to your master bedroom, there are a wide range of additional options and choices available.

We also have a range of flooring for you to choose from that includes luxurious carpets, stylish Karndean, ceramics and vinyl. There's also a choice of branded appliances for your kitchen as well as lighting and electrical upgrades.

The availability of items is subject to the stage of build and house type, but our sales consultants will be happy to provide guidance so you can tailor your new home however you choose.

Pick up a **Select** brochure from your sales consultant today to find an extensive list of items available. Such as:

- **Quartz kitchen worktops**
- **Premium appliance packages**
- **Flooring**
- **Built-in Symphony wardrobes**
- **Premium tiling in main bathroom and en suite**

A home designed with you in mind

We are constantly reviewing our houses and ensuring they are everything that our customers want in a home. That's why we are proud to have developed and launched our new range of homes.

These homes have been created to embrace modern design and styling, whilst retaining the classic architectural traditions on which Bovis Homes has built its heritage and brand since 1885.

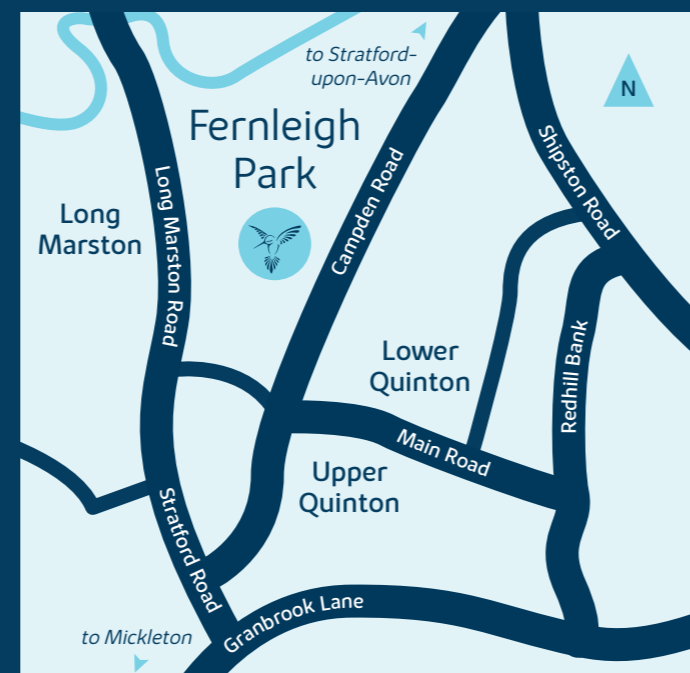
An integral part of the design process for our new range of homes was to ensure they have a real wow factor and eye-catching kerb appeal. From designing external elevations to create attractive street scenes through to maximising the flow and size of the rooms, the homes include a variety of features to capture the attention.

The size, positioning and number of windows in our new collection have created bright and airy homes, this mixed in with the higher ceilings gives your property a spacious feel.

The flow and layout of the new homes has been a key consideration to accommodate today's lifestyles, with a focus on future living. With the kitchen at the heart of the home, impressive family spaces have been included to create spacious, sociable living areas, while attention to master bedrooms and en suites has given the homes added desirability.

Fernleigh Park

Campden Road, Long Marston,
Warwickshire CV37 8LL



From Stratford-upon-Avon

- Take the A3400 heading south
- At the Waitrose roundabout, turn right onto Clifford Lane heading towards Broadway and Long Marston Airfield
- After 4 miles turn right into Fernleigh Park

From Mickleton

- Take the B4632 heading north
- After half a mile turn right to stay on the B4632 (Campden Road)
- After 2.5 miles turn left into Fernleigh Park





When you have finished with this brochure please recycle it.

The streetscene shown on the front has been produced for illustrative purposes only.
Please check the details of the homes you are interested in with the sales consultant.

Bovis Homes Limited, West Midlands region
Bromwich Court, Highway Point, Gorsey Lane, Coleshill, Warwickshire B46 1JU. Telephone: 01675 437 000

Produced by the Vistry Group Design Studio.

CMARS GD58931 / 04.21

