

Compton

Aldgate

One Portsoken
1 Portsoken Street
E1 8PH

Newly refurbished and
repositioned building in the heart of
Aldgate, offering large floor plates
and a grade A specification.

For Rent

12,000 to 126,645 ft²

020 7101 2020
compton.london

Compton

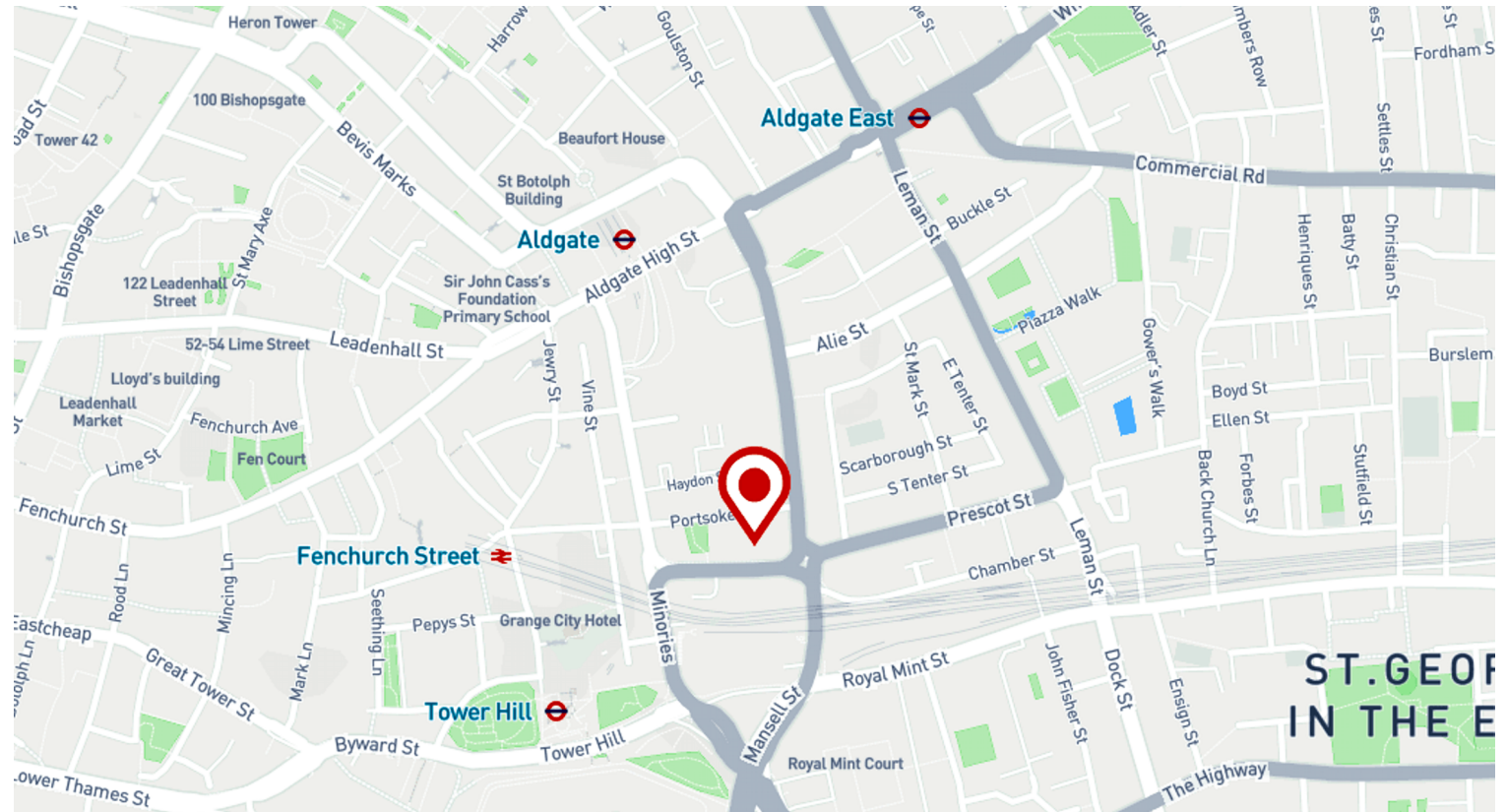
Aldgate

One Portsoken
1 Portsoken Street
E1 8PH

Newly refurbished and
repositioned building in the heart of
Aldgate, offering large floor plates
and a grade A specification.

For Rent

12,000 to 126,645 ft²



Compton

Aldgate

One Portsoken
1 Portsoken Street
E1 8PH

Newly refurbished and
repositioned building in the heart of
Aldgate, offering large floor plates
and a grade A specification.

For Rent

12,000 to 126,645 ft²



Compton

Aldgate

One Portsoken
1 Portsoken Street
E1 8PH

Newly refurbished and
repositioned building in the heart of
Aldgate, offering large floor plates
and a grade A specification.

For Rent

12,000 to 126,645 ft²



Compton

Aldgate

One Portsoken
1 Portsoken Street
E1 8PH

Newly refurbished and
repositioned building in the heart of
Aldgate, offering large floor plates
and a grade A specification.

For Rent

12,000 to 126,645 ft²



Compton

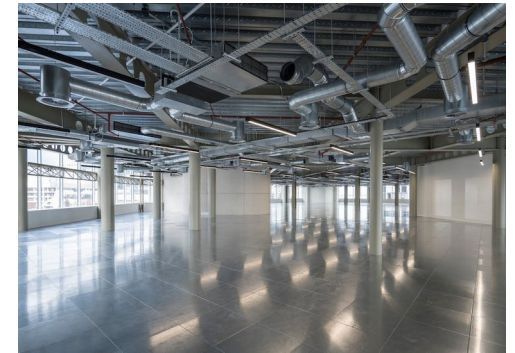
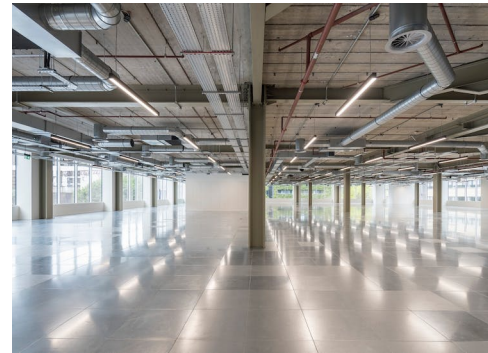
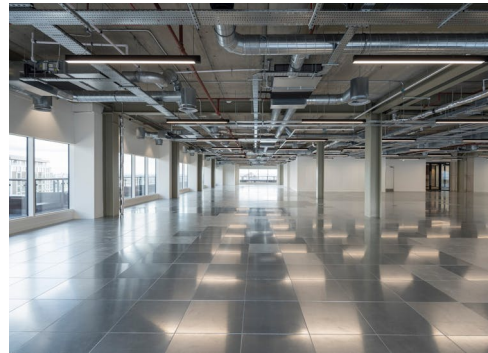
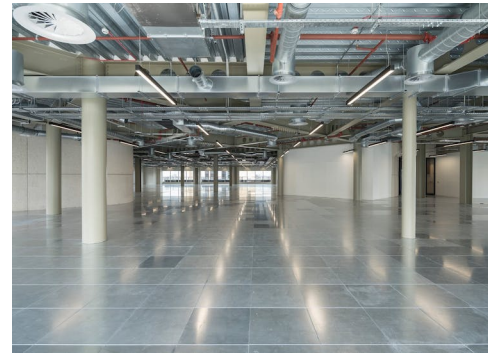
Aldgate

One Portsoken
1 Portsoken Street
E1 8PH

Newly refurbished and
repositioned building in the heart of
Aldgate, offering large floor plates
and a grade A specification.

For Rent

12,000 to 126,645 ft²



Aldgate

One Portsoken
1 Portsoken Street
E1 8PH

Newly refurbished and repositioned building in the heart of Aldgate, offering large floor plates and a grade A specification.

For Rent

12,000 to 126,645 ft²

Amenities

- Brand newly refurbished building
- 9,127 sq ft of terraces
- 3.95m floor to ceiling height
- Exposed services
- 9 new passenger lifts & 1 goods lift
- Full building conceirge app
- 'Platinum' wired score
- BREEAM 'Very Good'
- Onsite restaurant, cafe and bar
- 32 showers
- 302 lockers
- Wifi throughout the whole building
- 2 pipe fan coil air conditioning
- Designed at 1:8 sq m occupancy ratio
- Typical lower floor plates of 30,000 sq ft and upper floor plates of 25,000 sq ft.

Description

A place to work uninhibited and unchallenged with the power and right to act, speak, and think freely, away from constraints and convention.

Aldgate

One Portsoken
1 Portsoken Street
E1 8PH

Newly refurbished and
repositioned building in the heart of
Aldgate, offering large floor plates
and a grade A specification.

For Rent

12,000 to 126,645 ft²

Content

[View on Website](#)



Compton

Aldgate

One Portsoken
1 Portsoken Street
E1 8PH

Newly refurbished and
repositioned building in the heart of
Aldgate, offering large floor plates
and a grade A specification.

For Rent

12,000 to 126,645 ft²

Floor Areas & Outgoings

The accommodation comprises of the following:

Name	sq ft	Availability
8th	20,156	Under Offer
7th	25,030	Under Offer
6th	25,733	Under Offer
5th	27,469	Under Offer
4th	28,257	Under Offer
3rd	29,806	Let
2nd	30,414	Let
1st	27,469	Let
Mezzanine - Ground	1,755	Let
Ground - B1 / A1 / A2 / D1	7,320	Let
3rd - Part	16,879	Let
Total	240,288	

Compton

Contact Us

All appointments to view must be arranged via sole agents, Compton, through —

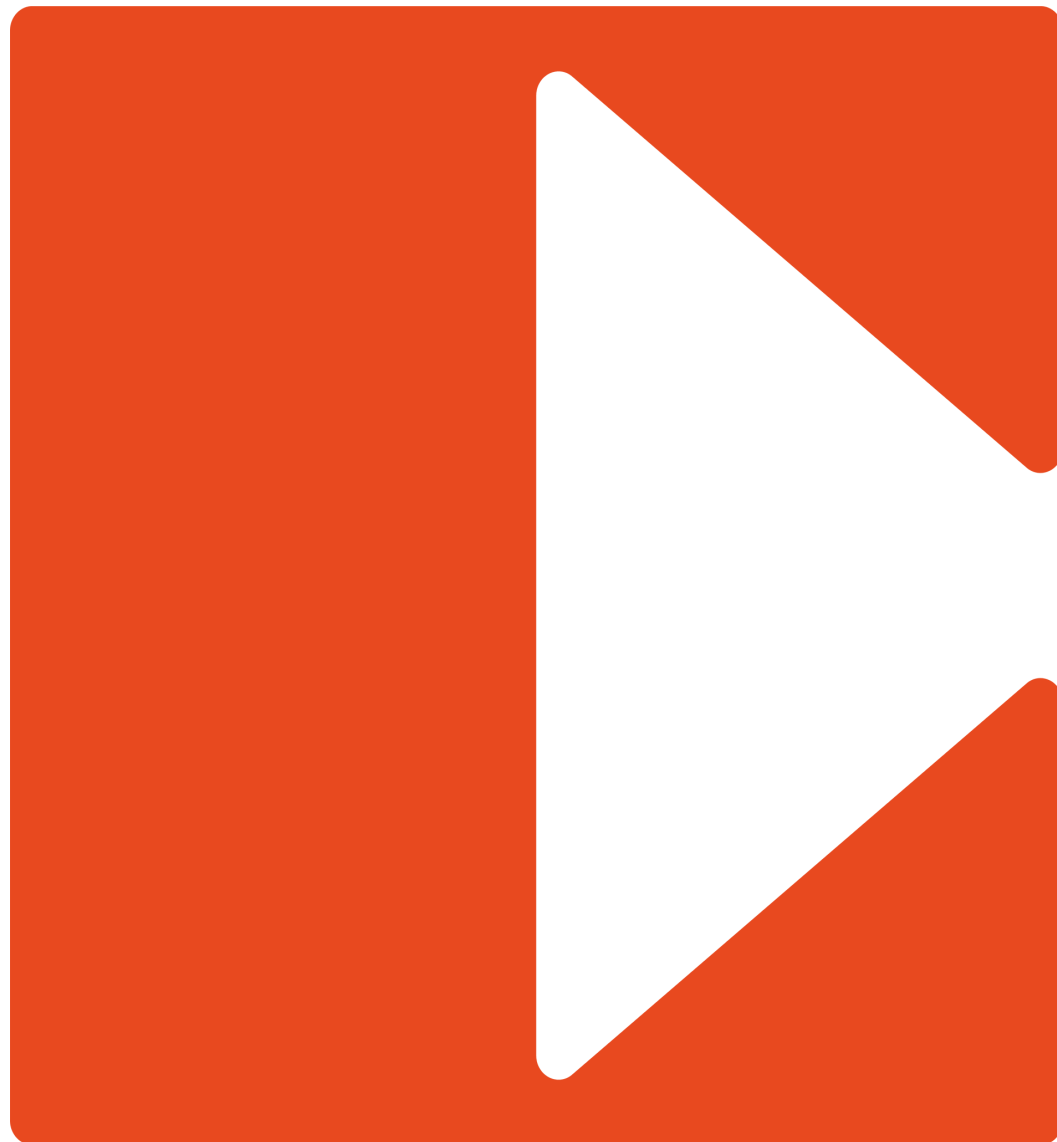
Shaun Simons
ss@compton.london
07788 423131

Elliott Stern
es@compton.london
07834 918700

Sarah Hill
sh@compton.london
07936 338 774

Emma Higgins
eh@compton.london
07769 605 295

020 7101 2020
compton.london



Compton gives notice that these particulars are set out as a general outline only for the guidance of intending Purchasers or Lessees and do not constitute any part of an offer or contract. Details are given without any responsibility and any intending Purchasers, Lessees or Third Party should not rely on them as statements or representations of fact, but must satisfy themselves by inspection or otherwise as to the correctness of each of them. No person employed or engaged by Compton has any authority to make any representation or warranty whatsoever in relation to this property. Compton is the licensed trading name of Compton RE Disposals Limited. Company registered in England & Wales no. Registered office: 47 St John's Square, Clerkenwell, London, EC1V 4JJ
Generated on 23/08/2023