

# Sixth floor

The sixth floor can be taken as a single unit, or split into two smaller units from 4,578 sq ft.

## Schedule of Areas

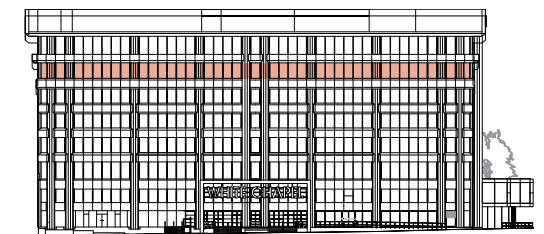
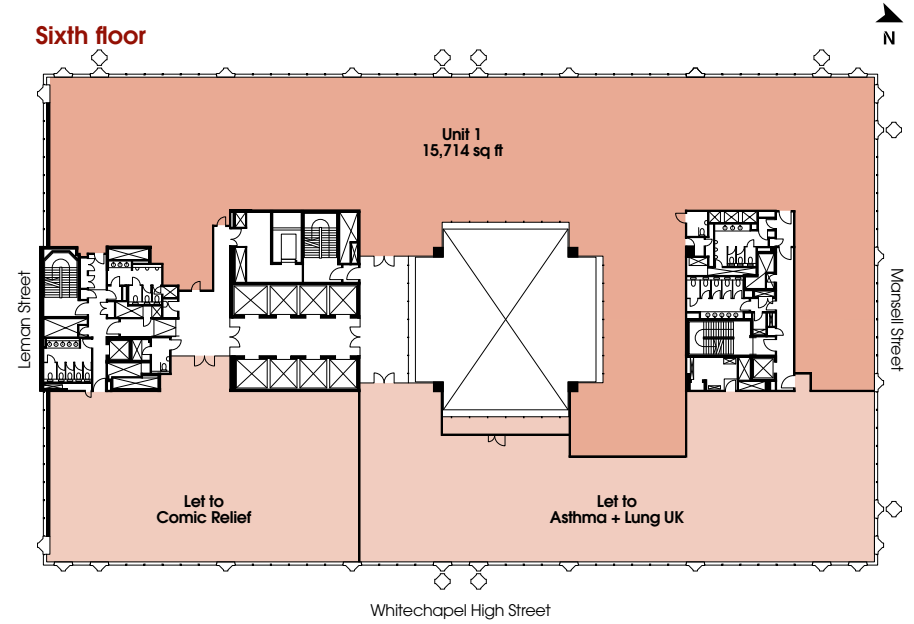
	sq ft*	sq m*
Sixth floor	15,714	1,460
<b>Total</b>	<b>15,714</b>	<b>1,460</b>

### Remaining CAT A space available on the sixth floor



Sixth floor lobby

### Sixth floor



\*Subject to final measurement on practical completion

# Sixth floor

Floorplate along Whitechapel High Street

