



Thomas Earle House, Kensington, London



£2,700,000

Set within one of Kensington's most sought-after developments, this exceptional three-bedroom apartment on Warwick Lane offers a superb balance of space, style and contemporary luxury in a prime London location.

The home features a generous open-plan reception and dining area ideal for relaxed living and entertaining, alongside a sleek modern kitchen. All three bedrooms are well-proportioned and benefit from their own beautifully finished en-suite bathrooms. Floor-to-ceiling windows fill the interiors with natural light, creating a bright and inviting atmosphere throughout.

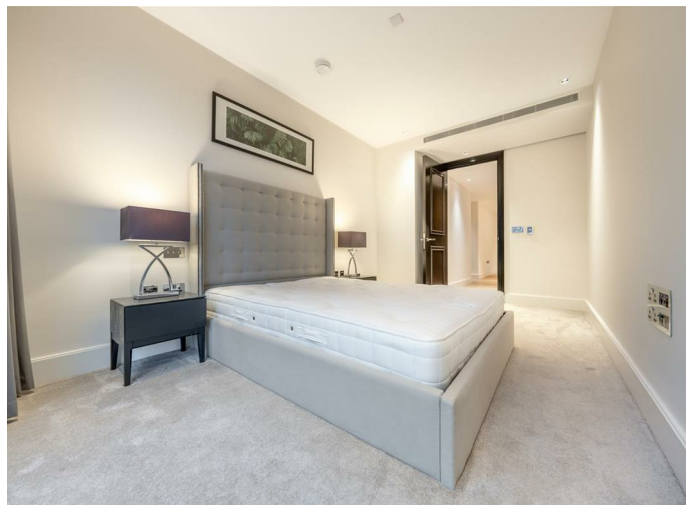
Residents enjoy access to an outstanding collection of amenities, including a 24-hour concierge, swimming and vitality pools, spa treatment room, private cinema, fully equipped gym, and landscaped gardens with calming water features — delivering an exceptional lifestyle experience.

Just an 8-minute walk from Kensington (Olympia) Station, the development offers excellent connectivity and easy access to world-class boutiques, restaurants and cultural attractions.

This remarkable home combines modern comfort with timeless design, making it a standout choice for families, a London base or a premium investment opportunity.

- 24-hour concierge
- Residents cinema room
- Residents swimming pool & sauna
- Residents spa & steam room
- Close proximity to shops & eateries
- Easy access to transport links
- Outdoor landscaped gardens
- Service Charge: £15,000 pa
- Ground Rent: £1000 pa
- Tenure: 997 years

REQUEST A VIEWING
+44 (0)20 3019 6150



REQUEST A VIEWING
+44 (0)20 3019 6150



REQUEST A VIEWING
+44 (0)20 3019 6150

Thomas Earle House, Warwick lane, W14



APPROXIMATE GROSS INTERNAL FLOOR AREA 176.9 SQ M / 1904 SQ FT
THIS FLOOR PLAN IS FOR ILLUSTRATIVE PURPOSES ONLY AND
SHOULD BE USED FOR THIS PURPOSE BY PROSPECTIVE APPLICANTS AS ITS NOT TO SCALE.

