



1 Ashley Road, London, N17 9QY

£2,100 Per Month



This luxury furnished one bedroom apartment is one of the largest in the 1 Ashley Road East development, benefits from a huge private terrace, is thoughtfully designed, beautifully finished and located in Tottenham Hale's most prestigious development.

Interiors are by Conran and amenities include 24 hour concierge, residents lounge and landscaped communal gardens.

Located less than a minutes' walk from Tottenham Hale Station offering links via Victoria Line (4 stops to Kings Cross and 6 stops to Oxford Street) and National Rail with a direct link to Stansted Airport in 40 minutes.

Council Tax Band: C

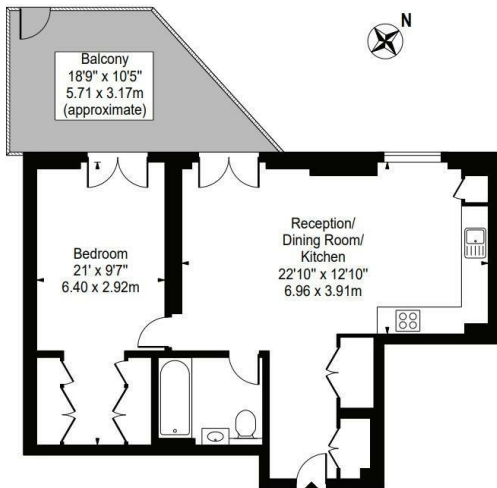
- COUNCIL TAX BAND C
- ONE BATHROOM
- RESIDENTS GARDEN
- CONRAN DESIGNED INTERIORS
- RESIDENTS LOUNGE
- UNIQUE 645 SQ FT ONE BED
- HUGE PRIVATE TERRACE
- 24 HOUR CONCIERGE
- OPPOSITE TOTTENHAM HALE STATION
- BIKE STORAGE



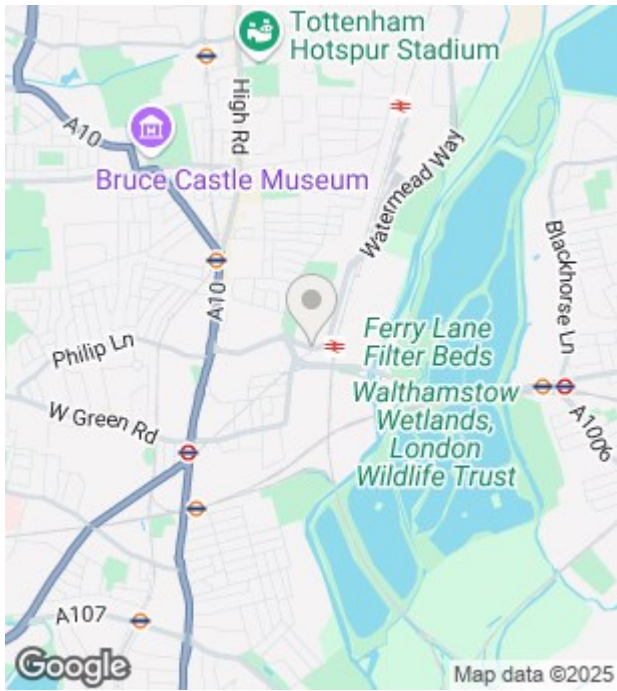


Heart Of Hale

Approx. Gross Internal Area 645 Sq Ft - 59.92 Sq M



This floor plan should be used as a general outline for guidance only and does not constitute in whole or in part an offer or contract.
Any intending purchaser or lessee should satisfy themselves by inspection, searches, enquiries and full survey as to the correctness of each statement.
Any areas, measurements or distances quoted are approximate and should not be used to value a property or be the basis of any sale or let.



Energy Efficiency Rating		
	Current	Potential
Very energy efficient - lower running costs		
(92 plus) A	84	84
(81-91) B		
(69-80) C		
(55-68) D		
(39-54) E		
(21-38) F		
(1-20) G		
Not energy efficient - higher running costs		
England & Wales		
EU Directive 2002/91/EC		

Environmental Impact (CO ₂) Rating		
	Current	Potential
Very environmentally friendly - lower CO ₂ emissions		
(92 plus) A		
(81-91) B		
(69-80) C		
(55-68) D		
(39-54) E		
(21-38) F		
(1-20) G		
Not environmentally friendly - higher CO ₂ emissions		
England & Wales		
EU Directive 2002/91/EC		

Unit 10 Paddington Works 8 Hermitage Street, London, W2 1BE
Tel: +44(0)20 3019 6151 Email: lettings@grange.london