



Westmark Tower, London, W2 1DB

£4,900 Per Month



This spacious two bedroom apartment is situated on the 1st floor of the highly sought after Westmark Tower, offering a luxury specification and use of five star residents facilities.

The apartment boasts a large reception leading to a cosy private balcony with views of the green spaces below. The open plan kitchen benefits from a separate utility room.

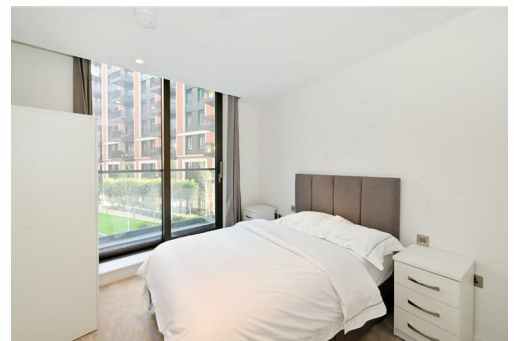
The principal bedroom boasts a walk in wardrobe and bathroom en-suite.

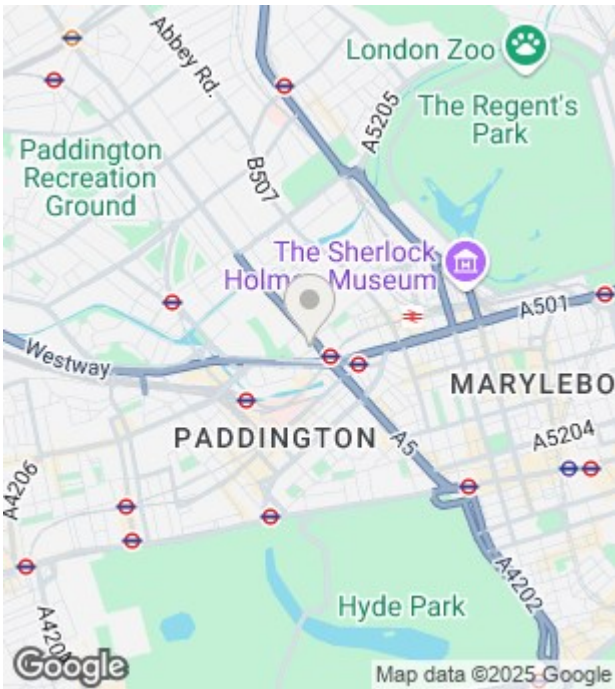
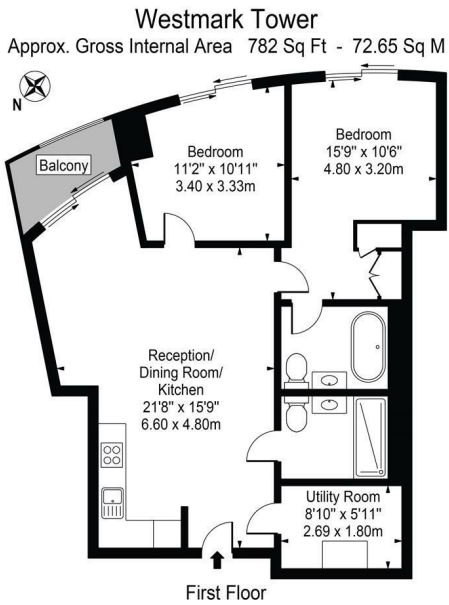
Situated in Zone 1 London and moments from the prestigious neighbourhoods of Marylebone and Little Venice, West End Gate comprises a range of apartments situated around private landscaped gardens.


Residents will enjoy first-class facilities including a 24 hour concierge, private cinema, residents dining, pool, gym & spa.


At 30 stories high, Westmark Tower is the flagship building within the development and offers dramatic views towards, Regents Park, The City, Hyde Park & beyond.

- Two Bedroom Apartment
- Comfort Cooling
- Swimming Pool / Jacuzzi
- Gymnasium
- Dining Room & Resident Lounge
- Two Bathroom
- 24 Hour Concierge
- Sauna & Steam Room
- Cinema Screening Room
- Council Tax Band: E





Energy Efficiency Rating		
	Current	Potential
Very energy efficient - lower running costs		
(92 plus) A	87	87
(81-91) B		
(69-80) C		
(55-68) D		
(39-54) E		
(21-38) F		
(1-20) G		
Not energy efficient - higher running costs		
England & Wales		EU Directive 2002/91/EC 

Environmental Impact (CO ₂) Rating		
	Current	Potential
Very environmentally friendly - lower CO ₂ emissions		
(92 plus) A		
(81-91) B		
(69-80) C		
(55-68) D		
(39-54) E		
(21-38) F		
(1-20) G		
Not environmentally friendly - higher CO ₂ emissions		
England & Wales		EU Directive 2002/91/EC 

Unit 10 Paddington Works 8 Hermitage Street, London, W2 1BE
Tel: +44(O)20 3019 6151 Email: lettings@grange.london