



## Westmark Tower, London, W2 1EF

**£3,250 Per Month**



Grange London is proud to present this beautiful 'Julia Palmer' interior designed, studio apartment. Situated on the 10th floor of the highly sought after Westmark Tower. Offering panoramic views towards central London, a luxury specification and use of five star residents facilities.

In Zone 1 London and moments from the prestigious neighbourhoods of Marylebone and Little Venice, West End Gate comprises a range of apartments situated around private landscaped gardens. Residents will enjoy first-class facilities including a 24 hour concierge, private cinema, residents dining, pool, gym & spa.

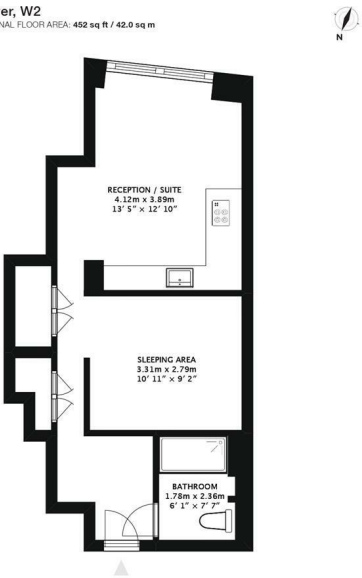
At 30 stories high, Westmark Tower is the flagship building within the development and offers dramatic views towards, Regents Park, The City, Hyde Park & beyond.

- Luxury Studio Apartment
- Resident Gymnasium
- Dining Room
- Swimming Pool & Jacuzzi
- Business Room
- 24 Hour Concierge
- Cinema Screening Room
- Resident Lounge
- Sauna & Steam Room
- Council Tax Band: E

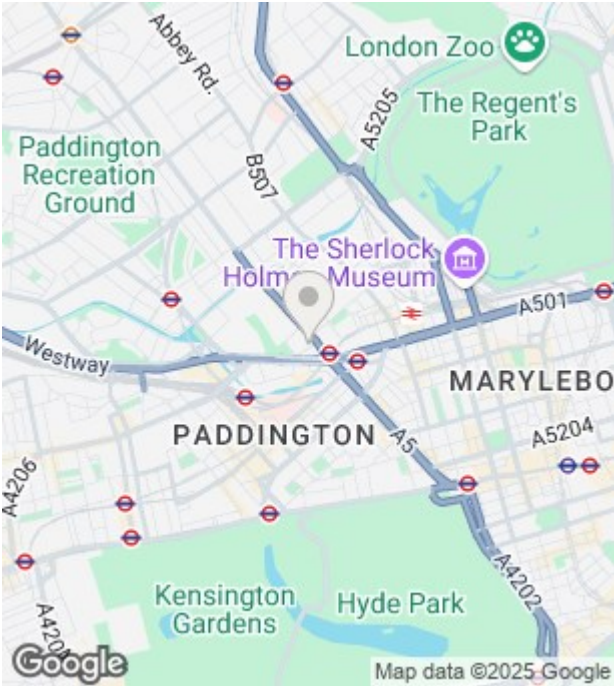





Westmark Tower, W2  
APPROX. GROSS INTERNAL FLOOR AREA: 452 sq ft / 42.0 sq m



FOR ILLUSTRATIVE PURPOSES ONLY, NOT TO SCALE.  
All measurements are given within a tolerance of +/- 10%. No responsibility is taken for any errors, omissions, misstatements or use of data shown.  
© 2025 Grange London. www.grangelondon.com



Energy Efficiency Rating		
	Current	Potential
Very energy efficient - lower running costs		
(92 plus) A	86	86
(81-91) B		
(69-80) C		
(55-68) D		
(39-54) E		
(21-38) F		
(1-20) G		
Not energy efficient - higher running costs		
England & Wales		EU Directive 2002/91/EC 

Environmental Impact (CO <sub>2</sub> ) Rating		
	Current	Potential
Very environmentally friendly - lower CO <sub>2</sub> emissions		
(92 plus) A		
(81-91) B		
(69-80) C		
(55-68) D		
(39-54) E		
(21-38) F		
(1-20) G		
Not environmentally friendly - higher CO <sub>2</sub> emissions		
England & Wales		EU Directive 2002/91/EC

Unit 10 Paddington Works 8 Hermitage Street, London, W2 1BE  
Tel: +44(O)20 3019 6151 Email: lettings@grange.london